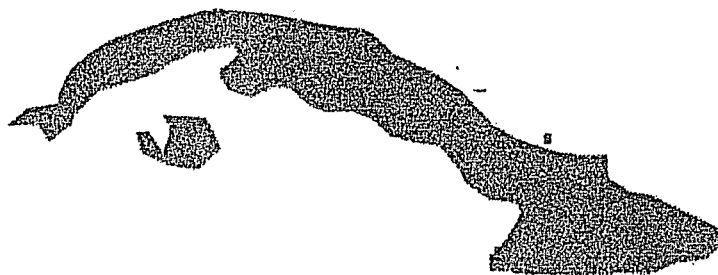


Cuba



A Collection of Stamps

issued under The U.S. Administration by

Samuel T. Bothwell Sr.



BOOK I

TABLE OF CONTENTS

THE SPANISH DOMINION

FIRST THROUGH FOURTH ISSUE, QUEEN ISABELLA II FACING RIGHT. 1855-1861	SECTION 1
QUEEN ISABELLA II FACING LEFT. IMPERFORATE AND PERFORATED. 1862-1869	SECTION 2
ISSUES OF FEBRUARY 1, 1870 - JANUARY 1, 1875.	SECTION 3
ALFONSO XII 1876 - 1883.	SECTION 4
ALFONSO XII 1883 - 1889. (INCLUDING SURCHARGES OF 1883)	SECTION 5
ALFONSO XIII 1890 - 1897. (BABY OR "PELON")	SECTION 6
ALFONSO XIII 1898. ("AUTONOMIA")	SECTION 7
CINDERELLA STAMPS & TELEGRAPH STAMPS 1868 - 1898. (INCLUDING "GIRO")	SECTION 8
UNITED STATES ADMINISTRATION	
PUERTO PRINCIPE ISSUE DECEMBER 19, 1898 - JANUARY 11, 1899.	SECTION 9
UNITED STATES STAMPS SURCHARGED "CUBA de PESO".	SECTION 10
ISSUE OF SEPTEMBER 1, 1899.	SECTION 11



Cuba

Issue of January, 1876

In December, 1874, Alfonso XII of Bourbon was called to the throne of Spain. The stamps bearing his portrait were printed by Fabrica Nacional de Moneda y Timbre, Madrid from dies engraved by Jose Garcia Morago, on rather thin, hard, white, wove, unwatermarked paper and perforated 14.

12 1/2 C.

#69,67,35.
light green



#69a,67,35b.
yellow green



#69b,67,35c.
emerald



#69x
pale blue green



Fakes?
or just very bad printing



25 C.

#70,68,36.
light violet



c

#70a,68,36.
gray



d

#70b,68,36b.
bluish gray



Fakes?
right edge
missing



Fake of
color

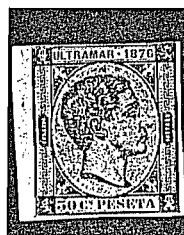


50 C.

#71,69,37.
ultramarine



#71b,69a,37.
imperforated



#71,69,37.
bulseye on neck



#71,69,37.
gumed both sides



1 PESETA

#72,70,38.
black on
yellowish white



#72P,70,38a.
proof
intense black



Cuba

Issue of January 1, 1877

With this issue, separate stamps were issued for each colony and possession. The stamps are the same as the issue of 1876 with the word ULTRAMAR replaced. The engraver and printer were the same, printed on yellowish, thin, wove paper. The stamps are unwatermarked, perforated 14. There is some question as to whether or not the 10 C. was ever placed in circulation.

10 C.
#73,71,39.
green ?



proof
#73P,71,39a.
bright green



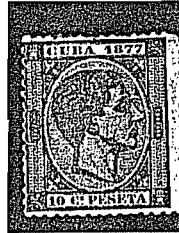
light green



olive green



period missing
between CUBA &
1877



good stamp
postal used
cancelled?



Fakes
color and
spot above S



color and
white slashes UR



perforated too
thin and too short



Fake
10 - broken D



fake



12 1/2 C.
#74,72,40.
gray lilac



#74,72,40.
lilac gray



proof
#74P,72,40a.
violet



#74b,72,40b.
blue gray



period missing
between CUBA &
1877



Fake
small S
1 in date legles



Cuba

Issue of January 1, 1877

#75,73,41.
dark green



#75a,73,41.
(.) missing



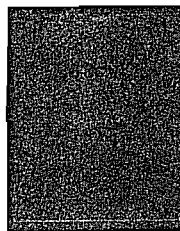
#75P,73,41.
blackish green



#75,73,41.
gray green



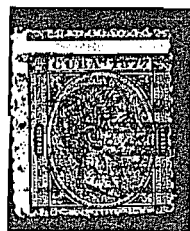
#75,73,41a.
light blue



#75,73,41.
slate blue



#75,73,41.
perforations
errors



#75,73,41.
fake imperforate



#75,73,41.
paper creased
in printing



#75,73,41.
thin paper



#75,73,41.
blot on nose
gummed both sides



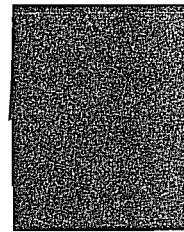
#76,74,42.
black



#76P,74,42.
intense black



#76,74,42.
(.) missing



#76,74,42.
dented plate



#76,74,42.
spot on eye



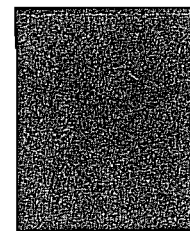
#76,74,42.
white circle



#76,74,42.
perforations
errors



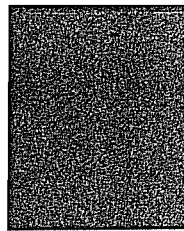
#77,75,43.
light brown



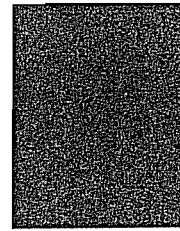
#77,75,43.
olive sepia



#77,75,43.
ochre



#77,75,43.
cinnamon



Fakes
CUBA.1877 too
small & last 7
touches line



letters of PESETA
miss aligned



Cuba

Issue of January 1, 1878

Same design as before, dated 1878. Dies engraved by Jose Garcia Morago, typographed on unwatermarked paper, perforation 14 and imperforate.

#78,76,44.
blue



#78a,76,44b.
dark blue



#78P,76,44a.
intense blue



#78,76,44s.
imperforate



#78,76,44.
light blue



#78,76,44.
spot on neck



#78,76,44.
spot below nose



#78,76,44.
spots below neck
position B4



#78,76,44.
spot on eye
frm bk below Cs
position B1



#78,76,44.
spot bk of neck



#78,76,44.
frm brk above 1
& below 1st E
position G2



#78,76,44.
spot in G of Gs
position A8



#78,76,44.
spot on forehead



Fake
perforation 12.5



Fake
paper wrong



Fake
period missing



#79,77,45.
black



#79P,77,45a.
intense black



#79,77,45.
line above hair



#79,77,45.
short 7



Fakes
perforation 12



#80,78,46b.
yellow brown



#80,78,46.
olive brown



#80b,78a,46.
gray bistre



Fake
colors wrong and 8 of 78 too thin



Fake



Cuba

Issue of January 1, 1878

#81,79,47.
deep green



#81a,79,47b.
yellow green



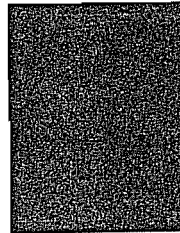
#81b,79,47.
period missing



#81,79,47.
blue



#81,79,47.
blue



#81,79,47.
blue



#81,79,47.
blueish green/



#81,79,47.
line on neck



#81,79,47s.
imperforate



Fakes
perforations cut



Fake
per. 14.5 x 14



#82,80,48.
black green



#82a,80,48.
green



#82b,80,48.
period missing
green



#82b,80,48.
period missing
black green



#82c,80,48.
design on back



#82P,80,48a.?
dark green



#82,80,48.
deep blueish
green



#82,80,48.
dirty hair
plate dirty



#82,80,48.
spot on 5



#83,81,49.
carmine



#83a,81,49b.
rose



#83P,81,49a.
dark carmine
period missing



Fake? or just
poor printing



Fakes
8 of 78 too thin
period missing



8 of 78 too thin
period missing



J fake



Cuba

Issue of January 1, 1879

#84,82,50.
slate black



Proof
#84P,82,50a.
intense black



#84x,82,50. CUBA no (.) 1879
uncataloged pos. D9, F1, and H1.
position D9



#84xx,82,50.
spot on oval at
LL flor de leaf
position G8



#84,82,50.
GUBA instead of
CUBA



Fake
per 13, & rough
paper wrong color



#85,83,51.
orange yellow



#85P,83,51a
yellow orange



Fakes per. 14.5 per. 14
all numbers are out of line and
different. 1 of 10 top arm to short



#86,84,52.
pale rose



#86a,84,52b.
rose



#86P,84,52a.
dark rose



rose on yellow
paper



Fake
color and
per 14.5



Cuba

Issue of January 1, 1879

#87,85,53.
ultramarine



#87,85,53.
bright ultra.



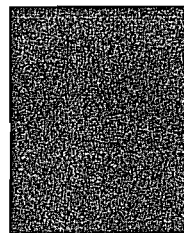
#87,85,53.
blue



#87,85,53.
light blue



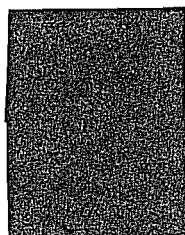
#87,85,53.
gray



#87,85,53.
pale blue *gray*



#87x,85,53. CUBA no (.) 1879
uncatalogued pos. B4 & B5.
position B4



#87bx,85,53. CUBA no (.) 1879
uncatalogued pos. B4 & B5.
bisect position B5



#87,85,53.
Fakes or very poor printing



#88,86,54.
gray



#88P,86,54a.
dark gray



#88x,86,54.
CUBA no (.) 1879
3 copies



#88,86,54.
vertical line
behind nose



#88,86,54.
spot on cheek



#88,86,54.
Fake or very
poor printing



#89,87,55.
olive sepia



#89P,87,55a.
dark olive sepia



#89,87,55.
spoty inking



Fakes
numbers are not lined up properly & 9 of 1879
touches line below all stamps. All have no (.)
between CUBA & 1879. 1 of PESETA inconsistent



Gum on front



Cuba

Blocks

#69,67,35.
light green

FAKE



#70a,68,36.
gray

FAKE



#72,70,38

FAKE

black on yellowish white

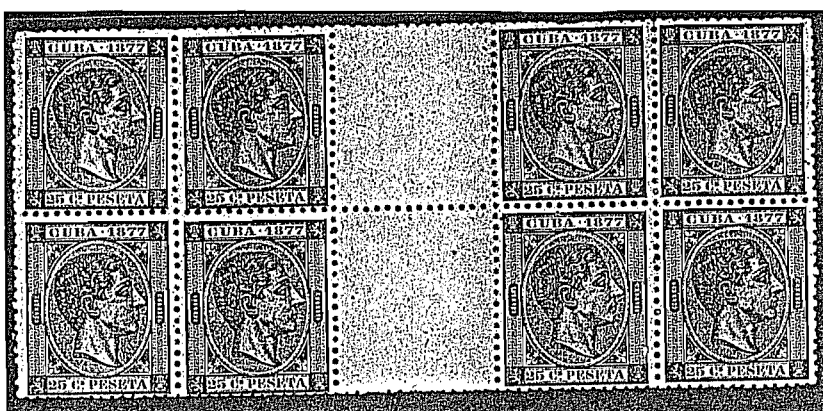


#72,70,38
black on yellowish white

FAKE

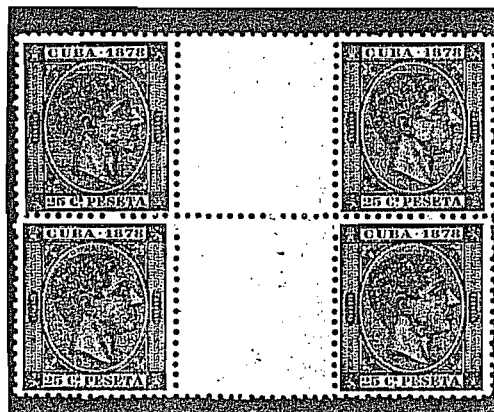


#75,73,41.
green



#76,74,42.

#81a,79,47b.



Cuba

Blocks

#78,76,44.

blue 1

#83,81,49.

carmine

Not used, only



#87,85,53.

light blue

Not used, only



Not used, only 816,79.47



ISLA DE CUBA.—CORREOS.

100 sellos de 5 céntimos de peseta correspondientes á los tratados de la Union general postal.





**Managed Futures
World-Wide Market Participation**

B 3 1 contract to Jan below
C-2 1 contract to 8
C-1 5 contracts to Paris 1980-
D-4 From Brazil 1980-8
E-1 From Brazil 1980-7
F 5 Spot on France 1980-7
F 1 2 contracts to below 7

CF

Dean Witter Cornerstone Funds

**Managed Futures
World-Wide Market Participation**

B 6 - Dot in G
L 5 Spot on France 1980-7
D 3 Spot on U
A 8 Spot on G⁵

CF

Dean Witter Cornerstone Funds



**Managed Futures
World-Wide Market Participation**

G-2 From Brazil 1980-7
G-3 From Brazil 1980-7
H-4 Spot on Neck
H-5 Spot on Eye & Neck
H-6 Spot on Top of Head
H-10 1 Per CS Attack to France
H-9 Chalk to France above
Spot on 5

CF

Dean Witter Cornerstone Funds



**Managed Futures
World-Wide Market Participation**

B3 1 contract to Jan 1980
C-2 1 contract to 8
C-1 5 contracts to 10
D-4 From 1000 to 1000
E-1 From 1000 to 1000
F 5 Spot on 1000 P+E
F 1 2 white line below 7

CF

Dean Witter Cornerstone Funds

**Managed Futures
World-Wide Market Participation**

B6 - 1000 to 1000
C5 Spot on 1000 P+E
D3 1000 to 1000
A 8 Spot on 1000

CF

Dean Witter Cornerstone Funds

**Managed Futures
World-Wide Market Participation**

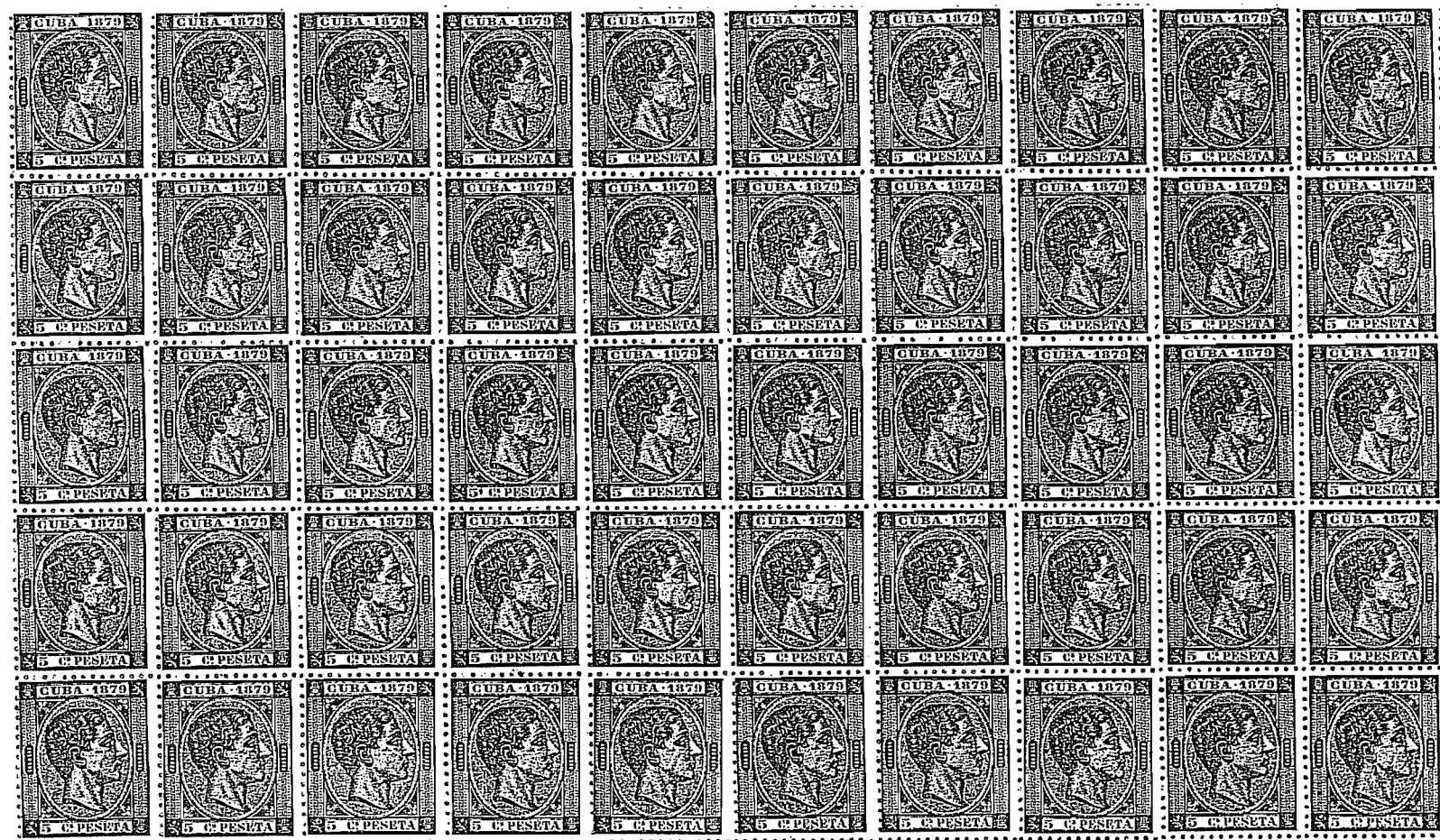
G-2 From 1000 to 1000
G-3 From 1000 to 1000
H-4 Spot on 1000
H-5 Spot on 1000
H-6 Spot on 1000
H-10 Spot on 1000
H-9 Spot on 1000

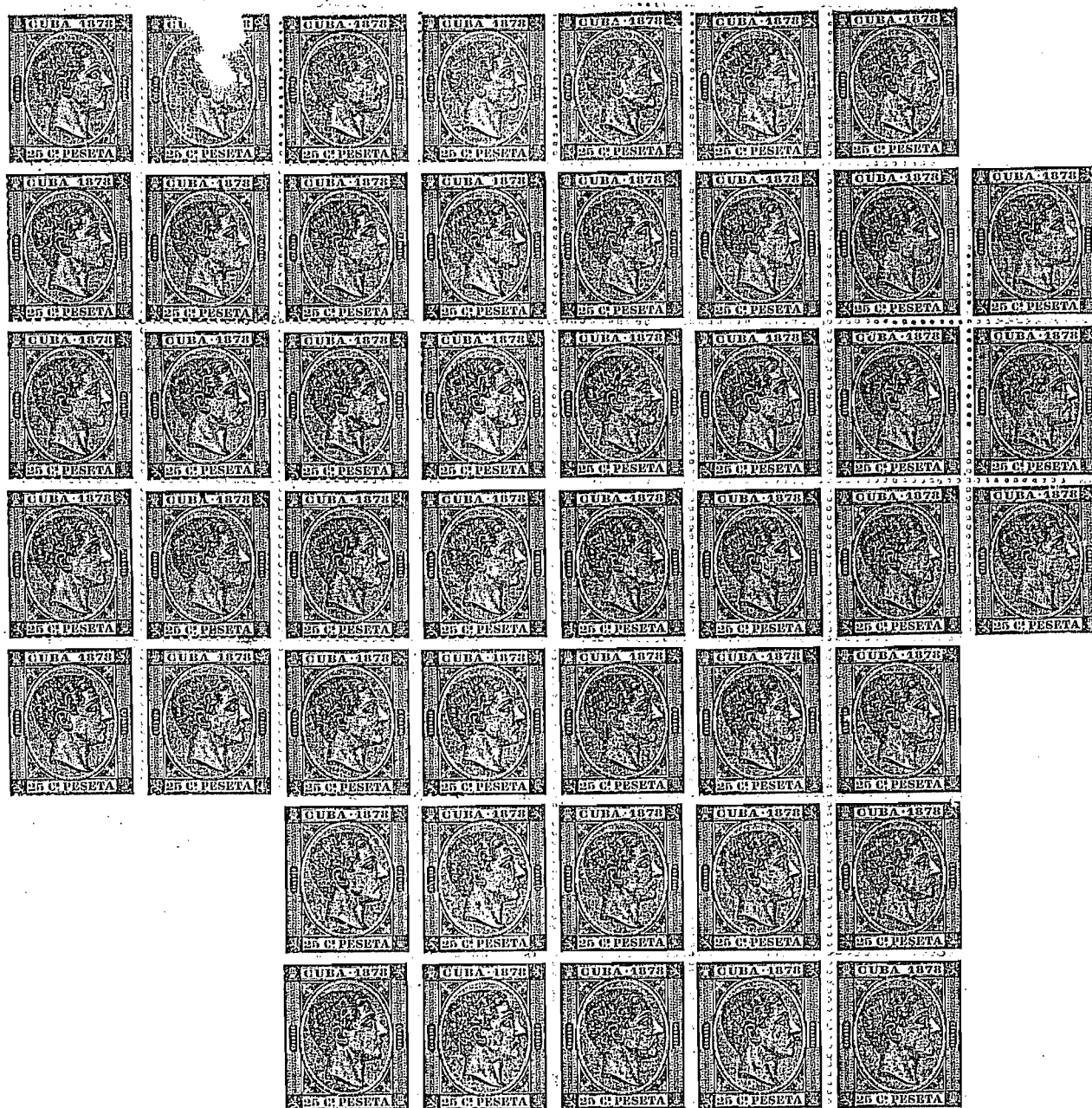
CF

Dean Witter Cornerstone Funds

CUBA.—CORREOS.—100 sellos de 5 céntimos de peseta.

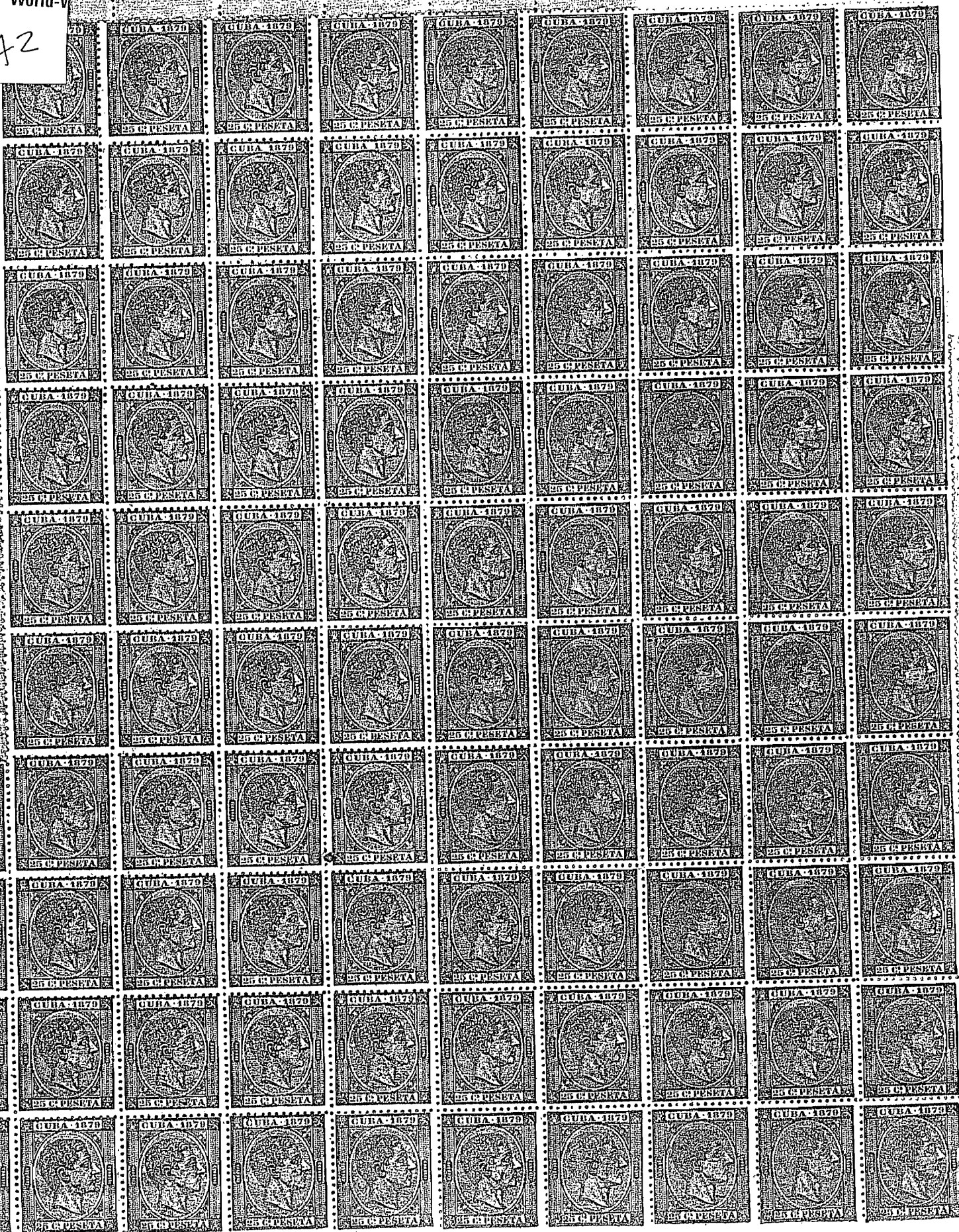


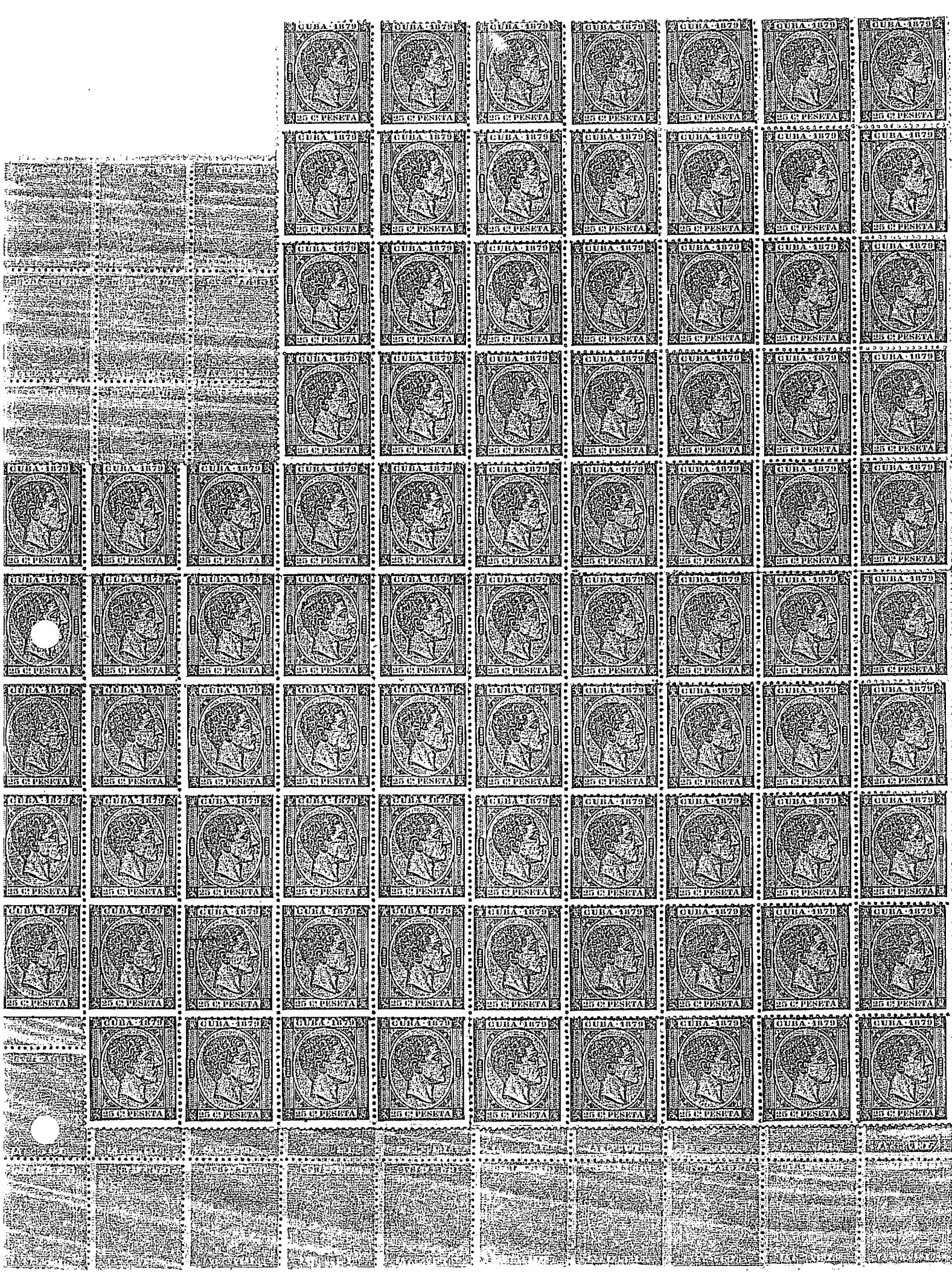




World-V

A2







Cuba

Issue of January 1, 1880

A new design with a different bust of Alfonso XII, similar to the issue of July 1, 1878 for Spain. Dies engraved by Eugenio Julia y Jover. Typographed by the Fabrica Nacional de Moneda y Timbre, Madrid on unwatermarked, white, wove paper, perforated 14. Some authorities believe that the 10c was never put into Postal use.

5 CENT

#90,88,56.
green



#90,88,56.
green
break above 1st
E of PESETA



#90,88,56.
green
broken first 8
of 1880



#90a,88,56b.
dark green



#90a,88,56b.
dark green
top missing of
UB of CUBA



#90a,88,56b.
dark green
line below 18
broken



10 CENT

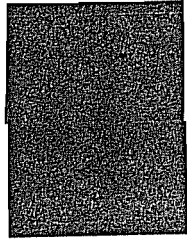
#91,89,57.
carmine lake



#91P,89,57a.
dark carmine



#91,89,57e.
doubled



#91,89,57.
blured print



#91,89,57.
per. off center



12 1/2 CENT

#92,90,58.
lilac gray



#92P,90,58a.
dark gray



break in line
below 18



12 1/2 CENT
18 1/2 CENT



12 1/2 CENT
18 1/2 CENT



25 CENT

#93,91,59.
light blue



#93a,91,59b.
blue gray



#93b,91,59c.
broken 5



#93P,91,59a.
grayish ultra

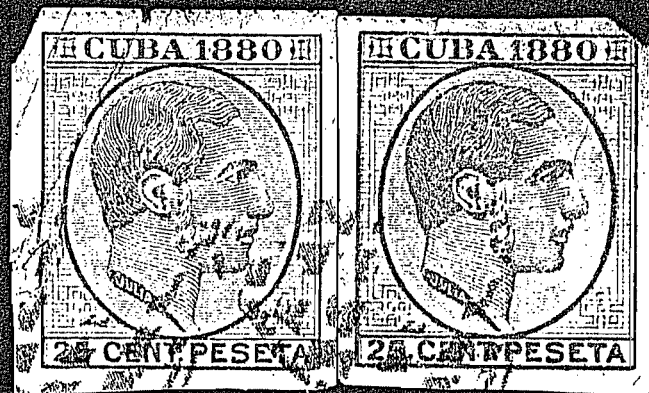


top of CUBA
missing



Fake
color, perf.
crude printing





Left stamp is mine; right one is owned
by Samuel T. Bothwell

Cuba

Issue of January 1, 1880.

50 CENT

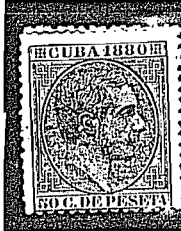
#94,92,60.
brown



#94a,92,60b.
dark brown



#94,92,60.
light brown



#94a,92,60b.
spot on neck



line broken
below BA 18



top of CUBA
missing



UNA PESETA

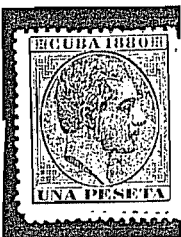
#95,93,61.
light brown



#95,93,61.
top of UB
missing



#95,93,61.
line below BA 18
missing



#95,93,61.
top of 88
missing



Issue of January 1, 1881.

This issue is very similar to the Issue of 1880, except for the date and the curancy was changed to 100 Centavos = 1 Peso.

Un C. DE PESO

#96,94,62.
gray green



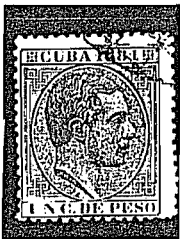
#96a,94,62.
green



#96a,94,62a.
light green



#96a,94,62.
line above UN
broken



Fake?
very poor
printing



2-C.

#97,95,63.
carmine



#97a,95,63a.
dark carmine



#97a,95,63a.
lake



Cuba

Issue of January 1, 1881

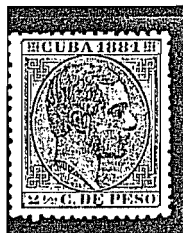
#98,96,64.
olive sepia



#98a,96,64a.
light sepia



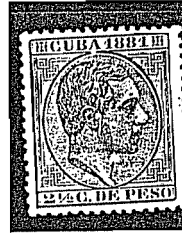
#98a,96,64a.
E of DE touches
line below



#98a,96,64a.
top of 2
missing



#98a,96,64a.
oval broken
below A of CUBA



#98x,96,64.
olive brown



#99,97,65.
blue gray



#99a,97,65a.
bluish gray



#99a,97,65a.
break in line
above 5



#99x,97,65.
drab



#99xx,97,65.
slate



#99xxx,97,65.
grey brown



#100,98,66.
light brown



#100,98,66.
top of 2
missing



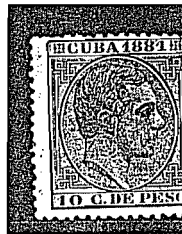
#100,98,66.
spot in hair



#100a,98,66a.
yellow brown



#100b,98,66a.
deep yellow
brown



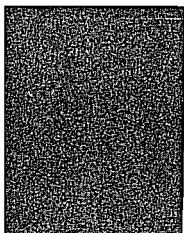
#100b,98,66a.
doubled



#101,99,67.
sepia brown



#101x,99,67.
doubled



#101xx,99,67.
light sepia brown



Cuba

Issue of 1882-1883

Placed on sale at various times during the year, these stamps are similar to the issue of 1880, but lack the date. Typographed by the Fabrica Nacional de Moneda y Timbre, Madrid from dies engraved by Eugenio Julia y Jover, on white, wove, unwatermarked paper, perforated 14. The unretouched plates used in this printing display these characteristics: the oval containing the portrait is surrounded by a heavy line of color of nearly even thickness and nearly touches the bottom line of the block containing the word "CUBA", and the opening in Alfonso's hair above the temple is a sharp angle, ending in a point.

UN C.

#102,100,68.
green

#102a,100,68a.
green on very
white paper

#102,100,68.
blured printing

#102a,100,68a.
blured printing



2-C.

#103,101,69.
carmin lake

#103a,101,69a.
rose carmin

#103x,101,69a.
rose red

#103,101,69.
laughing king



2 1/2 C.

#104,102,70.
dark brown

#104a,102,70a.
olive sepia

#104,102,70.
dot in 1./2

Dot in C

1-1/2a
Dot on eye



5 C.

#105,103,71.
gray blue

#105a,103,71a.
slate violet

#105b,103,71a.
purplish blue



Cuba

Issue of 1882-1883

Stamps in this printing display these characteristics: the oval containing the portrait is surrounded by a heavy line of color of nearly even thickness and nearly touches the bottom line of the block containing the word "CUBA", and the opening in Alfonso's hair above the temple is a sharp angle, ending in a point.

10 C.

#106,104,72.
olive sepia

#106,104,72.
bistre

Fakes

per 14 1/2

per 14
color

bottom of UR
scroll broken

per 14 x 13 1/2
color

bottom of UR
scroll broken



20 C.

#107,105,73.
red brown

Fake

per 13 1/2



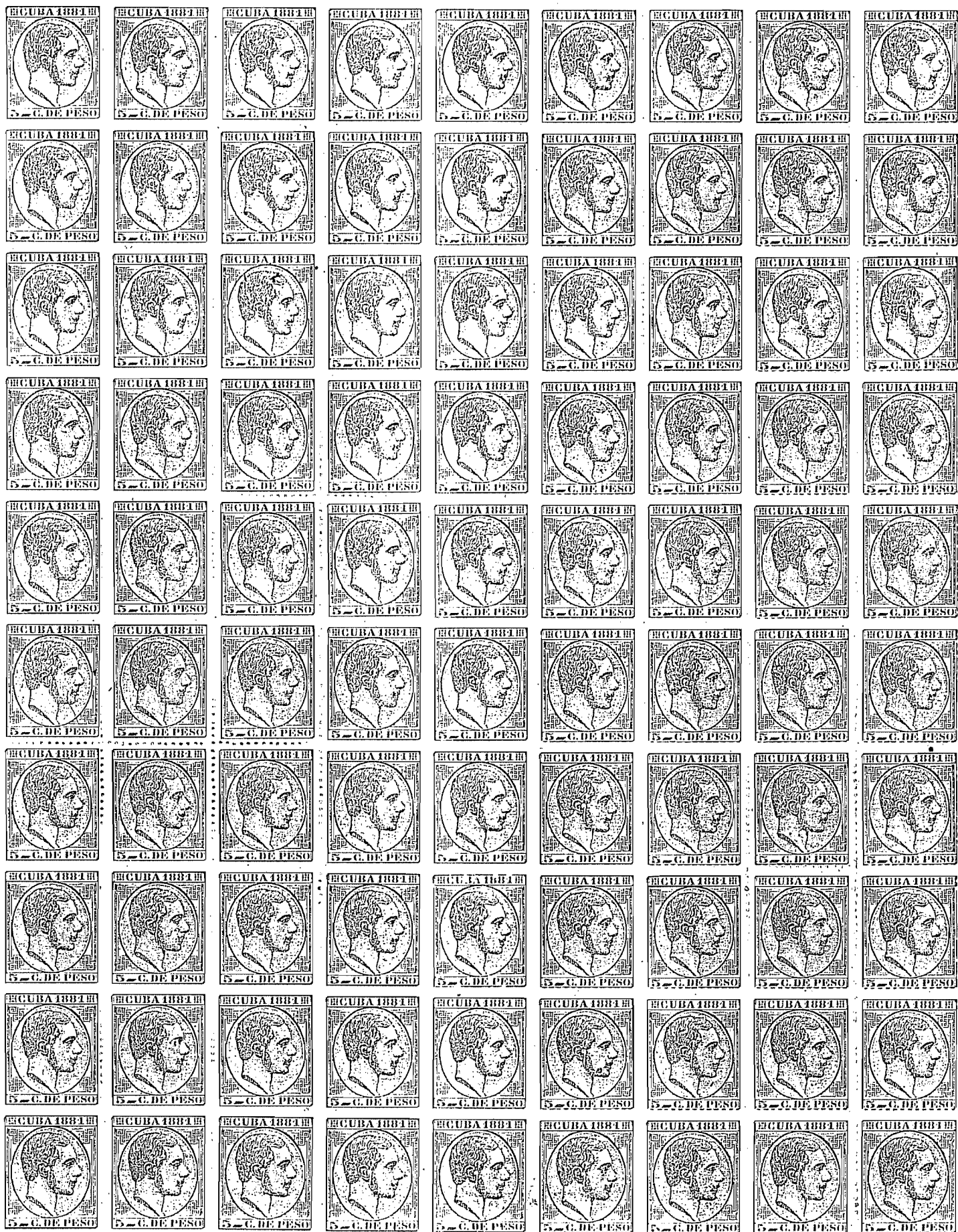
Blocks

#100,98,66.



#101,99,67.





Cuba

Surcharges of 1883.

On the night of April 9-10, 1883, a fire was set in the Revenue Administration Building in Havana in an effort to hide the thefts of the 5, 10, and 20 centavos postage and other tax stamps. The plot was discovered and to keep the thieves from benefitting from the theft, the government in Havana was given surcharges. The public would be permitted to exchange their stamps for surcharged ones until July 10, 1883. However it is now known that this failed and the thieves exchanged their stamps also.

There were five different types of surcharges made up in plates of 25 cliches arranged 5 x 5. They were applied on 25 stamps at a time on the sheets off 100 arranged 10 x 10. As the stamps were received on an irregular basis, there were many printings using all five types of surcharges with the result being that there exist varieties and errors almost to catalogue. For more than 40 years I have been fascinated by this surcharge and have attempted to get every conceivable combination. The surcharges were applied in "La Propaganda Literaria" a print shop in Havana on a hand press. Four colors of ink were used. On the 5 C. red, on 10 C. blue, and on the 20 C. black.

Type I



Type II



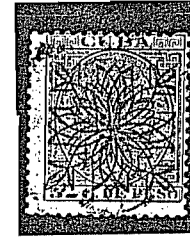
Type III



Type IV



Type V



Fake Surcharges on real stamps.

Type I. The ornamental center is different with the diamond consisting of two distinct lines, while in the genuine, the lines gather into a thick single line at the right and left angles. One side is more pointed than the other.



Type II. The leaf-like lines extending along each side of the center design are poorly drawn and irregular and do not touch the outer edges of the design as they do in the genuine.



Type III. The leaf-like ornaments above and below the numeral value are replaced by sharp points that touch the square containing the numeral.



Type IV. Several of the interior lines of the design are incomplete where in the genuine all lines intersect and are complete.



Type V. The forgery measures 24.5mm along the diagonal, while on the genuine, it is 23.5.



Cuba

Surcharges of 1883

Type I

5 on 5 C.

#108,106,75.
point left



#108x,106,75.
point right



#108a,106d,75.
5 missing



#108,106c,75.
inver. surcharge



#108,106b,75.
double surcharge



#108,106,75.
double surcharge



#108,106,75.
no period



#108,106,75.
period before 5



#108,106e,75.
Types I & IV
doubled



10 on 10 C.
#109,107,80.
point left



#109x,107,80.
point right



#109,107a,80.
inver. surcharge



#109,107,80.
double surcharge



#109,107,80.
green surcharge
FAKE



#109,107,80.
inverted 1
instead of I



20 On 20 C.
#110,108,85.
point left



#110x,108,85.
point right



#110,108b,85.
doubled



Block

#109x,107,80.
point left



Cuba

Surcharges of 1883

Type II

5 on 5 C.

#111,109,78.

single dot left



#111x,109,78.

single dot right doubled



#111,109b,78.



#111x,109,78.

no period SDL



#111x,109,78.

no period SDR



#111x,109,78.

, instead of .



#111x,109,78.

4 partials

Type II & III



#111x,109,78.

doubled

Type II & V



10 on 10 C.

#112,110,83.

single dot left



#112x,110,83.

single dot right doubled



#112x,110,83.

doubled

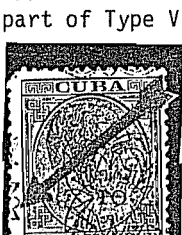
Type II & III



#112x,110,83.

Type II &

part of Type V



20 On 20 C.

#113,111,88.

single dot left



#113,111,88.

single dot right



Block

#111,109,78.

single dot right



Cuba

Surcharges of 1883

Type III

5 on 5 C.

#114,112,77

missing line in
UL loop above 5



#114,112,77

missing line in
LR loop below 5



#114,112a,77

inverted



#114,112,77

doubled



#114,112,77

no period



#114,112,77

no period ML UL



#114,112b,77

doubled

Type III & IV



#114,112b,77

doubled

Type III & IV



#114,112b,77

Type III &
partial IV



#114,112,77

Type III &
partial II



Block

#114,112,77



10 on 10 C.

#115,113,82.

missing line in
UL loop above 5



#115,113,82.

missing line in
LR loop below 5



#115,113,82.

green surcharge



20 On 20 C.

#116,114,87.

missing line in
UL loop above 5



#116,114,87.

missing line in
LR loop below 5



#116a,114a,87.

10 on 20 stamp



#116a,114a,87.

10 on 20 stamp



#116,114,87.

Type III &
part of II



#116,114c,87.

Type I & III



Cuba

Surcharges of 1883

Type IV

5 on 5 C.

#117,115,74.
broken line
upper right



#117,115,74.
broken line
lower left



#117,115,74.
no period
BLUR



#117,115,74.
no period
BLLL



#117,115,74.
no period
part of III



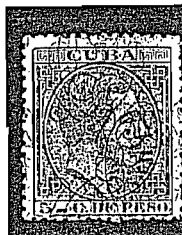
#117,115,74.
, instead of .



#117,115,74.
period before 5



#117,115b,74.
doubled



#117,115,74.
partial IV & I



10 on 10 C.
#118,116,79
broken line
upper right



#118,116,79
broken line
lower left



20 On 20 C.
#119,117,84.
broken line
upper right



#119,117,84.
broken line
lower left



#119,117,84.
~~10 on 20 stamp~~
Type IV &
partial III



Cuba

Surcharges of 1883

Type V

5 on 5 C.

#120,118,76.

#120,118,76.

#120,118,76.

#120,118,76.

#120,118,76.

square tipped leaf

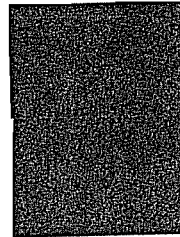
STLL

STLUL

STLLL

upper right

black surcharge



10 on 10 C.

#121,119,81.

#121,119,81.

#121,119,81.

#121,119,81.

Fake

#121,119,81.

square tipped leaf

STLL

STLUL

black surcharge

upper right



20 On 20 C.

#122,120,86.

#122,120,86.

#122,120,86.-#116a,114a,87.

STLLR

STLLL

pair Type V & Type III 10 On 20



Cuba

Issues of 1883-1888.

From 1883 through 1888 Spain issued for Cuba, five issues of stamps bearing the portrait of Alfonso XII. Some were from the plates of the 1882 Issue and some from new plates with slight variations called the first and second retouching. For convenience and because of the irregular dates of the issues, many catalogs consider this entire period as one issue. Design, engraver, printing, paper and perforations are the same as that of the Issue of 1882.

First Retouch

The opening in Alfonso's hair is wider and somewhat rounder. The line around the medallion is thin except at the upper right and does not touch the horizontal line above it.

#132,127,102.

Second Retouch

The opening in Alfonso's hair is a semi-circle, the lock above the forehead is almost straight. The white line around the medallion is much broader than before.

#129,121,95.

Unretouched
#133,129,99.



Issue of 1883.

2 1/2 C.
#123,122,99
olive gray



5 C.
#124,125,100.
gray blue



Fake
#124a,125,100.



10 C.
#125,127,102.
reddish brown



Fake
#125a,127,102F. #125,127,102.
inperforate



10 C.
#125,127,102.
spot base of neck



Cuba

Issue of 1884.

2 1/2 C.

#126,124,96a.
unretouched
violet



#126,124,96a.
unretouched
violet blue



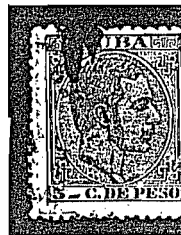
5 C.

#127,125,100
first retouch
dull lavender



Fakes

#127,125,100
first retouch
dull lavender



20 C.

#128,128,102.
unretouched
olive bistre



#128,128,102.
line above 20
broken



Issue of 1885.

UN C.

#129,121,95.
second retouch
gray green



#129,121,95.
spot above eye



2 1/2C.

#130,124a,96.
unretouched
red lilac



#130a,124a,96.
unretouched
lilac



#130a,124a,96.
unretouched
broken 2



Issue of 1886

2 1/2C.

#131,124b,97.
unretouched
grayish ultra



10 C.

#132,127,103.
first retouch
light brown



Issue of 1887.

2 1/2C.

#133,122,99a.
unretouched
red brown



5 C.

#134,126,101.
second retouch
grayish blue



Fake

#134,126,101.



Cuba

Issue of January 1, 1888

On December 1, 1887, there appeared in "Gaceta de la Habana" a decree requiring the use on periodicals of a special new stamp received from Sapin. The new stamps, with the value in "Milesimas" (thousandths), were designed primarily for use on newspapers and periodicals. They were acceptable however, for any type of postage. Design, engraver, printing and perforation are the same as the Issue of 1882. All stamps of this issue are second retouch.

1/2 MIL.

#135,P1,89.
second retouch
black



postal used
second retouch
black



1 MIL.

#136,P2,90.
second retouch
black



postal used
second retouch
black



2 MIL.

#137,P3,91.
second retouch
black



postal used
second retouch
black



3 MIL.

#138,P4,92.
second retouch
black



postal used
second retouch
black



4 MIL.

#139,P5,93.
second retouch
black



postal used
second retouch
black



8 MIL.

#140,P6,94.
second retouch
black



postal used
second retouch
black



2 1/2 C.

#141,129,99.
unretouched
light brown



5 C.

#142,126,101.
second retouch
pale slate



10 C.

#143,130,103.
first retouch
blue



#143a,130,103a.
first retouch
intense blue



Fake

#143,130,103.
first retouch
color and poor printing



20 C.

#144,131,105.
unretouched
brown gray



Fake

#144,131,105.
very rough printing
one imper. edge

