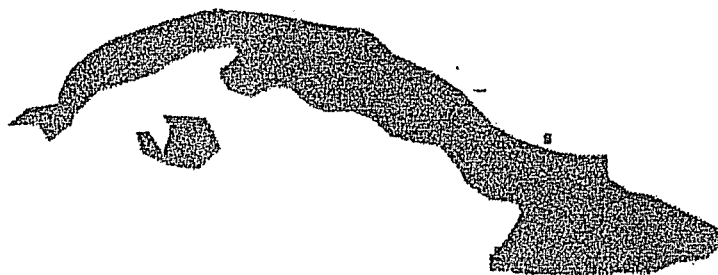


# Cuba



A Collection of Stamps

issued under The U.S. Administration by

Samuel T. Bothwell Sr.



BOOK I

TABLE OF CONTENTS

THE SPANISH DOMINION

FIRST THROUGH FOURTH ISSUE, QUEEN ISABELLA II FACING RIGHT. 1855-1861	SECTION 1	
QUEEN ISABELLA II FACING LEFT. IMPERFORATE AND PERFORATED. 1862-1869	SECTION 2	★
ISSUES OF FEBRUARY 1, 1870 - JANUARY 1, 1875.	SECTION 3	
ALFONSO XII 1876 - 1883.	SECTION 4	★
ALFONSO XII 1883 - 1889. (INCLUDING SURCHARGES OF 1883)	SECTION 5	
ALFONSO XIII 1890 - 1897. (BABY OR "PELON")	SECTION 6	★
ALFONSO XIII 1898. ("AUTONOMIA")	SECTION 7	★
CINDERELLA STAMPS & TELEGRAPH STAMPS 1868 - 1898. (INCLUDING "GIRO")	SECTION 8	
UNITED STATES ADMINISTRATION		
PUERTO PRINCIPE ISSUE DECEMBER 19, 1898 - JANUARY 11, 1899.	SECTION 9	★
UNITED STATES STAMPS SURCHARGED "CUBA de PESO".	SECTION 10	
ISSUE OF SEPTEMBER 1, 1899.	SECTION 11	

# Cuba

In Cuba, the first landing of American troops occurred at Baiquiri, later known as Daiquiri, on June 20, 1898. On June 23rd, "United States Post Office, Military Station No. 1" opened for business. U.S. stamps were required. No town names appear on the early postmarks. U.S. stamps were generally not available, all post offices except that at Santiago used Spanish colonial cancellers; and Spanish stamps were used until stocks of the U.S. stamps overprinted for Cuba were received.

A significant exception to the rule of the U.S. stamps and possibly Cuba's most valuable and dangerous stamp issue are the provisional surcharges on Spanish stamps that are called the "Puerto Principe Issues". The overprinting was done on a pedal operated flat bed "Gordon" press, on horizontal strips on five stamps. Each of the stamps has a three line surcharge; the word "HABILITADO" at the top, a numeral of value in the center, and "cent." or "cents." at the bottom.

First Printing, December 19, 1898.

The height of the surcharge must be correct for the value of the surcharge. For this issue the surcharge measured from the top of the "I" of "HABILITADO" to the bottom of the "n" in "cent." or cents." is 17.5mm and the ink is opaque black.

1 cent. on 1 milésima.

#217,176,1\*\*.

The "t" of "cent."  
lacks an upward curve  
at bottom right.  
position 4



Inverted surcharge.

#217a,177d,1\*\*.

2 cents. on 2 milésima.

#218,178,2\*\*.

#218,179,2A\*\*.

positions 1 & 2.



position 4.



position 5.



\*\* Intervencion Por Los Estados Unidos De America.

Samuel T. Bothwell

# Cuba

First Printing, December 19, 1898.

The height of the surcharge must be correct for the value of the surcharge. For this issue the surcharge measured from the top of the "I" of "HABILITADO" to the bottom of the "n" in "cent." or "cents." is 17.5mm and the ink is opaque black.

2 cents. on 2 milesimas inverted

#218a, 179a, 2A\*\*. position 2.



#218a, 178a, 2\*\*. position 4.



3 cents. on 2 milesimas

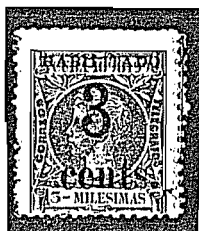
#219, 179F.

3 cents. on 3 milesimas

#220, 180, 3\*\*. position 1



#220, 181, 3A\*\*. position 2



#220, 180, 3\*\*. position 3



#220, 180, 3\*\*. position 4



#220, 180, 3\*\*. position 5



3 cents. on 3 milesimas

#220a, 180a, 181a, 3, 3A\*\*. *unused*

5 cents. on 5 milesimas

#221, 189, 8A\*\*. position 2.



#221, 188, 8\*\*. position 3.



#221, 188, 8\*\*. position 4.



\*\* Intervencion Por Los Estados Unidos De America.

Samuel T. Bothwell

# Cuba

First Printing, December 19, 1898.

The height of the surcharge must be correct for the value of the surcharge. For this issue the surcharge measured from the top of the "I" of "HABILITADO" to the bottom of the "n" in "cent." or cents." is 17.5mm and the ink is opaque black.

5 cents. on 5 milesimas inverted

5 cents. on 5 milesimas doubled

#221a, 188a, 189a, 8, 8A\*\*.

#221b, 188b, 189b, 8, 8A\*\*.

Second Printing December 24, 1898.

The surcharge in 17.5mm in height, in bright black ink. The settings are the same as in the first printing except the figure "5" is in a slightly different position and the printing is much clearer.

3 cents. on 2 milesimas

#222, 179F, 179G, 3, 3A\*\*.

5 cents. on 1 milesimas

#222, 182, 5\*\*.

position 3.



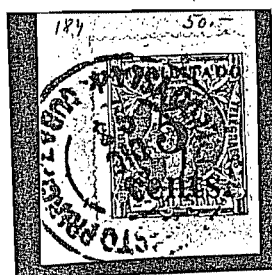
5 cents. on 1 milesimas inverted

#222a, 182a, 183a, 5\*\*.

5 cents. on 2 milesi

#223, 185, 6A\*\*.

position 2.



5 cents. on 3 milesimas

#224, 187, A\*\*.

position 2.



\*\* Intervencion Por Los Estados Unidos De America.

Samuel T. Bothwell

# Cuba

Second Printing December 24, 1898.

The surcharge in 17.5mm in height, in bright black ink. The settings are the same as in the first printing except the figure "5" is in a slightly different position and the printing is much clearer.

5 cents. on 3 milesimas inverted  
#224a,186a,187a,7,7A\*\*.

5 cents. on 5 milesimas  
#225,188,189,8,8A\*\*.

5 cents. on 5 milesimas inverted  
#225a,188a,189a,8,8A\*\*.

5 cents. on 5 milesimas doubled  
#225b,188b,189b,8,8A\*\*.

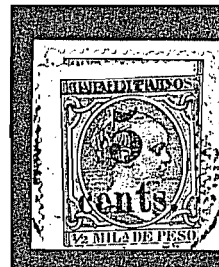
5 cents. on 1/2 milesima  
#226,191,4A\*\*.  
position 2

#226,190,4\*\*.  
position 3



5 cents. on 1/2 milesima inverted

#226a,190a,4\*\*.  
position 4



Third Printing, December 24, 1898.

The surcharge is 19.5mm in height, in brilliant though somewhat duller black ink than the second. The type used in the first two printings now shows visible signs of wear, and the value on the 1 cent issue is incorrectly denominated "cents.".

1 cents. on 1 milesima

#227,177a,9\*\*.  
position 2

#227,177,9\*\*.  
position 3

pos 4

pos 5



\*\* Intervencion Por Los Estados Unidos De America.

Samuel T. Bothwell

No. 849

Jan. 5, 1995

THE CUBAN PHILATELIC SOCIETY OF AMERICA, INC.  
P.O. Box 141656  
Coral Gables, Florida 33114-1656

EXPERTIZATION CERTIFICATE

We have examined the enclosed item, of which a copy is  
attached, and described by the applicant as follows:

Country: CUBA

<u>Cat. No.</u>	<u>Issue</u>	<u>Denom.</u>	<u>Color</u>
177	1898	1¢ over 1 Mil.	Orange brown

Scott's unless otherwise specified.

Used. Pos. IV\*

and we are of the opinion that:  
It is genuine\*\*\*



Submitted by:

No. 850

Jan. 5, 1995

THE CUBAN PHILATELIC SOCIETY OF AMERICA, INC.  
P.O. Box 141656  
Coral Gables, Florida 33114-1656

EXPERTIZATION CERTIFICATE

We have examined the enclosed item, of which a copy is  
attached, and described by the applicant as follows:

Country: CUBA

<u>Cat. No.</u>	<u>Issue</u>	<u>Denom.</u>	<u>Color</u>
177	1898	1¢ over 1 Mil.	Orange brown

Scott's unless otherwise specified.

Used. Pos. V\*

and we are of the opinion that:  
It is genuine\*\*\*



001850

Submitted by: \_\_\_\_\_

# Cuba

Third Printing, December 24, 1898.

The surcharge is 19.5mm in height, in brilliant though somewhat duller black ink than the second. The type used in the first two printings now shows visible signs of wear, and the value on the 1 cent issue is incorrectly denominated "cents.".

1 cents. on 1 milésima inverted  
#227a, 177b, 177d, 9\*\*.

1 cents. on 1 milésima doubled  
#227b, 177e, 9\*\*.

3 cents. on 1 milésima  
#228, 179b, 10\*\*.

#228, 179B, 10\*\*.  
position 3.



3 cents. on 1 milésima ~~inverted~~  
#228a, 179d, 10\*\*.

*Doubled*

5 cents. on 1 milésima  
#229, 183d, 16\*\*.

5 cents. on 5 milésima  
#230, 189c, 8\*\*.

5 cents. on 1/2 milésima  
#231, 192, 193, 15\*\*.

5 cents. on 1/2 milésima doubled  
#231a, 192a, 15\*\*.

*231-192-15\*\*  
pos IV*



Fourth Printing, December 27, 1898.

The surcharge is 19.5mm in height, in red ink on the 1 centavo stamps of the Spanish Cuba 1898 issue.

3 cents. on 1 centavo  
#232, 196, 14\*\*.

#232, 196, 14\*\*.  
position 3.

#232, 196, 14\*\*.  
position 4.



3 cents. on 1 centavo inverted  
#232a, 196a, 197a, 14\*\*.

\*\* Intervencion Por Los Estados Unidos De America.

Samuel T. Bothwell

No. 868

Jan. 5, 1995

THE CUBAN PHILATELIC SOCIETY OF AMERICA, INC.  
P.O. Box 141656  
Coral Gables, Florida 33114-1656

EXPERTIZATION CERTIFICATE

We have examined the enclosed item, of which a copy is attached, and described by the applicant as follows:

Country: CUBA

<u>Cat. No.</u>	<u>Issue</u>	<u>Denom.</u>	<u>Color</u>
192	1898	5¢ over ½ Mil.	Blue green

Scott's unless otherwise specified.

Used. Pos. IV\*

and we are of the opinion that:  
It is genuine\*\*\*



895100

Submitted by: \_\_\_\_\_

No. 898

Jan. 5, 1995

THE CUBAN PHILATELIC SOCIETY OF AMERICA, INC.  
P.O. Box 141656  
Coral Gables, Florida 33114-1656

EXPERTIZATION CERTIFICATE

We have examined the enclosed item, of which a copy is attached, and described by the applicant as follows:

Country: CUBA

<u>Cat. No.</u>	<u>Issue</u>	<u>Denom.</u>	<u>Color</u>
179 B	1898	3¢ over 1 mil.	Orange brown

Scott's unless otherwise specified.  
Used. Pos. I

and we are of the opinion that:  
It is genuine\*\*\*



01898

Submitted by:

No. 900

Jan. 5, 1995

THE CUBAN PHILATELIC SOCIETY OF AMERICA, INC.  
P.O. Box 141656  
Coral Gables, Florida 33114-1656

**EXPERTIZATION CERTIFICATE**

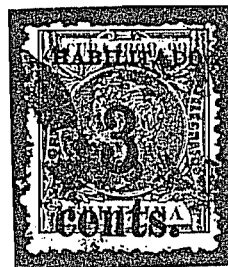
We have examined the enclosed item, of which a copy is attached, and described by the applicant as follows:

Country: CUBA

<u>Cat. No.</u>	<u>Issue</u>	<u>Denom.</u>	<u>Color</u>
179D	1898	3¢ ove 1 mil.	Orange brown

Scott's unless otherwise specified.  
Used. Pos. IV

and we are of the opinion that:  
It is genuine\*\*\*



01900

Submitted by:

# Cuba

Fourth Printing, December 27, 1898.

The surcharge is 19.5mm in height, in red ink on the 1 centavo stamps of the Spanish Cuba 1898 issue.

5 cents. on 1 centavo

#233,198,21\*\*.

position 1.

#233,199,21A\*\*.

position 2.

#233,198,21\*\*.

position 4.

#233,198,21\*\*.

position 5.



5 cents. on 1 centavo inverted

#233a,198a,199a,21\*\*.

5 cents. on 1 centavo horizontal

#233b/c,198b,199b,21\*\*.

5 cents. on 1 centavo doubled

#233d,198c,199c,21\*\*\*.

5 cents. on 1 centavo doubled inverted

#233e,198d,21\*\*\*.

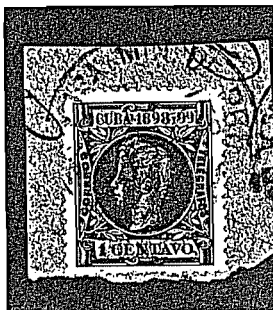
10 cents. on 1 centavo

#234,200,22\*\*.

positions 1.

#234,200,200a,22\*\*.

positions 1 to 5.



Fifth Printing, January 11, 1899.

The surcharge is 19.5mm in height, in somewhat dullish black ink. The typefaces and settings are different.

3 cents. on 1 Mils.

#235,201,10\*\*.

position 5.



3 cents. on 1 Mils. inverted

#235a,201a,10\*\*.

\*\* Intervencion Por Los Estados Unidos De America.

Samuel T. Bothwell

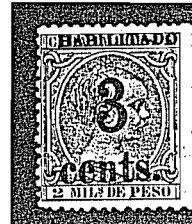
# Cuba

Fifth Printing, January 11, 1899.

The surcharge is 19.5mm in height, in somewhat dullish black ink. The typefaces and settings are different.

3 cents. on 2 mils.

#236,204,12A\*\*. position 4.



3 cents. on 2 mils. inverted.  
#236a,203b,204a,12\*\*.

3 cents. on 3 mils.  
#237,205,13\*\*.

#237,206,13A\*\*. position 4.



3 cents. on 3 mils. inverted  
#237a,205a,206a,13\*\*.

5 cents. on 1 mils.  
#238,211,212,16\*\*.

5 cents. on 2 mils.  
#239,213,17\*\*. #239,213,17\*\*. position 2.



5 cents. on 3 mils.  
#240,215,216,18\*\*.

5 cents. on 4 mils.  
#241,217,218,19.

\*\* Intervencion Por Los Estados Unidos De America.

Samuel T. Bothwell

# Cuba

Fifth Printing, January 11, 1899.

The surcharge is 19.5mm in height, in somewhat dullish black ink. The typefaces and settings are different.

5 cents. on 4 mils. inverted

#241a,217b,218a,19\*\*

5 cents. on 8 mils.

#242,219,220,20\*\*. #242,219,20\*\*.

position 2.



5 cents. on 8 mils.

#242a,219a,220a,20\*\*.

\*\* Intervencion Por Los Estados Unidos De America.

*Samuel T. Bothwell*

No. 67 567

Apr. 28, 1978

THE PHILATELIC FOUNDATION

99 PARK AVENUE  
NEW YORK, N.Y. 10016

EXPERT COMMITTEE

We have examined the enclosed item submitted by the  
applicant described as follows:

Country CUBA Issue 1898-9 Denomination 5c on 8m  
Color blue green Cat. No. 219

Brief description or additional  
information

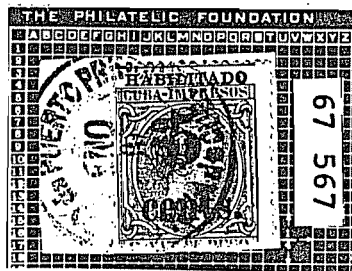
All Catalogue numbers are Scott's unless  
otherwise specified.

On piece with Puerto Principe cancellation.

of which a photograph is attached and are of the opinion

that it is a genuine position 2 on a small

torn piece. -----



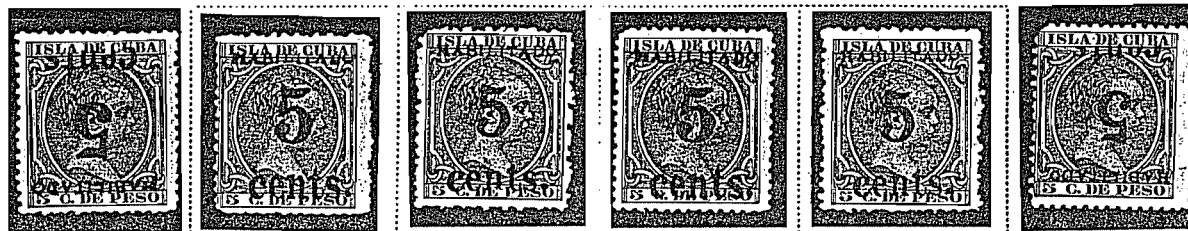
  
For The Expert Committee  
Chairman

submitted by Michael Rogers.

# CUBA

ISSUED UNDER ADMINISTRATION OF THE UNITED STATES  
1898-99

Cuban Stamps of 1896 and 1898 Surcharged in Puerto Principe  
Surcharged "HABILITADO" and Value



# Cuba

## Fakes

#218,178,2\*\*.  
broken 2



#218,178,2\*\*.  
broken 2



#218,178,2\*\*.  
on angle



#218,178,2\*\*.  
broken c e



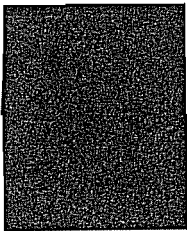
#220,180,3\*\*  
broken c e



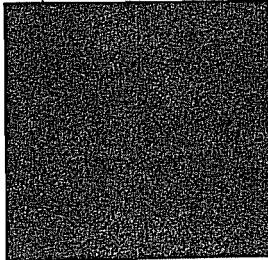
#220,180,3\*\*.  
position 5  
no defects 19.5mm  
NO 3mm 3  
painted



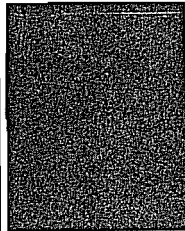
#222,182,5\*\*.  
surcharge on top  
of postmark



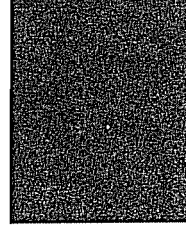
#223,185,6\*\*.  
may not be fake  
position 3  
postmark on top



#225,188,8\*\*.  
B different  
no defects



#226,191,4\*\*.  
no defects  
pos 4.



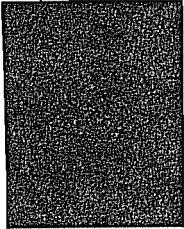
#226,191,4\*\*.  
type to large



#226,191,4\*\*.  
surcharge 19.5mm



#228,179b,10\*\*.  
surcharge on top  
of postmark



#229,183,16\*\*.  
surcharge on top  
of postmark?



pos 4  
Block wrong  
H-Lot wrong

#233,198,21\*\*.  
wrong alignment



#224,200,22\*\*.  
wrong ink



5 Too for  
Left NIK ON CAN  
SAME as Surcharge

# Cuba

Issue of January 2, 1899.

United States stamps of the 1895 & 1898 issue with portraits of U.S. historical personages, surcharged CUBA" and a new value in "c. de PESO" in black ink by the Bureau of Engraving and Printing at Wash. D Watermarked double line capitals "USPS", perforated 12.

1c. on 1c.

#243,221,23\*\*.  
yellow green



#243f,221,23\*\*.  
upper part of  
left leg of A  
broken



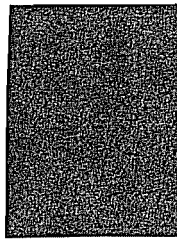
#243a,221,23\*\*.  
deep green



#243g,221,23\*\*.  
small serif on 1



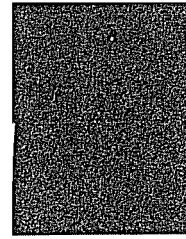
#243b,221,23\*\*.  
gray olive



#243c,221,23\*\*.  
doubled



#243x,221,23\*\*.  
broken E



#243d,221,23\*\*.  
no period  
after PESO



#243x,221,23\*\*.  
dot below d



#243e,221,23\*\*.  
deformed d P41.



#243x,221,23\*\*.  
dot below CU



#243,221,23\*\*.  
broken top  
of right triangle



2 1/2 c. on 2 c.  
Carmine

#244,223a,25a\*\*.  
broken upper  
serif of B



\*\*Intervencion Por Los Estados Unidos De America.

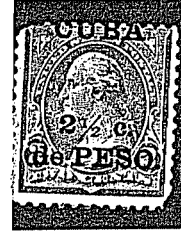
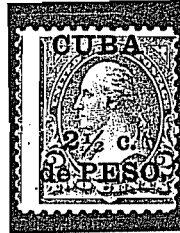
Samuel T. Bothwell

# Cuba

Issue of January 2, 1899.

2 1/2 c. on 2 c.  
orange red

#245,223a,25\*\*. #245a,223a,25\*\*. #245b,223a,25\*\*. #245,223a,25\*\*. #245,223a,25\*\*. #245,223a,25\*\*.  
broken upper serif of B broken lower half of / thin 1/2 off center perforation surcharge too high

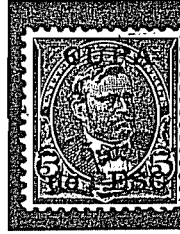
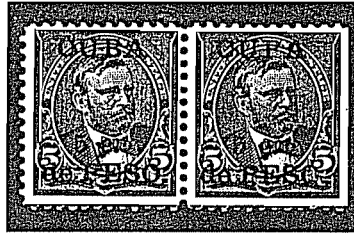


5 c. on 5 c.  
blue

#246,225,27\*\*. #246a,225,27\*\*. #246b,225,27\*\*. #246c,225,27\*\*. #246d,225,27\*\*. #246,225,27\*\*.  
light blue CUPA CUBA on bottom broken upper serif of B FAKE  
5 c. to big

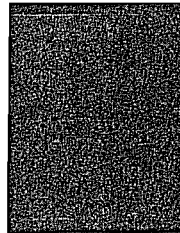
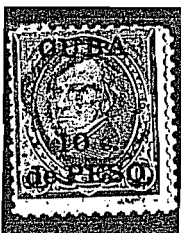


#246,225,27\*\*. #246,225,27\*\*. #246,225,27\*\*. #246b,225,27\*\*. #246b,225,27\*\*. #246b,225,27\*\*.  
high surcharge low surcharge Pair one CUPA both are genuine stamps that have had perforations added to right side



10 c. on 10 c.  
brown

#247,226,28\*\*. #247a,226,28\*\*. #247b,226,28\*\*. #247c,226,28\*\*. #247d,226,28\*\*. #247,226,28\*\*.  
dark brown CUBA omitted CUBA on bottom Fake 0 of 10 above P 1 is wrong surcharge set to left Right



\*\*Intervencion Por Los Estados Unidos De America.

Samuel T. Bothwell

# Cuba

Issue of January 3, 1899.

2 c. on 2 c.

carmine

#248,222,24\*\*.

Fake?

#248a,222c,24c\*\*.#248a,222,24\*\*.  
inverted surcharge and regular

Fake?

#248b,222,24b\*\*.  
CUPA

#248c,222,24\*\*.  
no . after PESO

#248d,222,24\*\*.  
broken upper  
serif of B



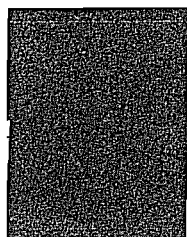
#248,222,24\*\*.  
broken E of PESO

#248,222,24\*\*.  
poor inking

Fake  
#248,222,24\*\*.

Fake  
#248,222,24\*\*.

Fake  
#248,222,24\*\*.



2 c. on 2 c.

red

#249,222a,24a\*\*.

Fake?

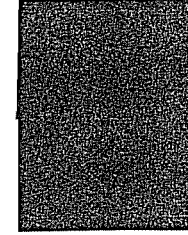
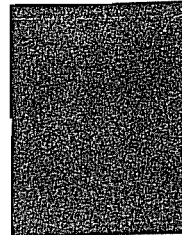
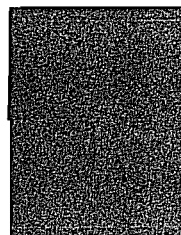
#249a,222ac,24ac\*  
inverted and  
regular doubled

CUPA

#249b,222a,24a\*\*.  
#249,222a,24a\*\*.  
#249,222a,24a\*\*.  
. between 2 & c. deformed A

#249,222a,24a\*\*.  
light CUBA

Fig 269



3 c. on 3 c.

purple

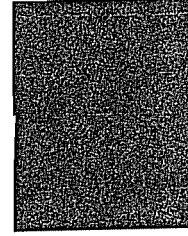
#250,224,26\*\*.

#250a,224,26\*\*.  
3 above P Ty I

#250a,224,26\*\*.  
3 above P Ty II

#250c,224,26\*\*.  
#250e,224,26\*\*.  
broken E of PESO flat top of 3

#250x,224,26\*\*.  
long bottom  
serif on B



\*\*Intervencion Por Los Estados Unidos De America.

Samuel T. Bothwell

# Cuba

Issue of January 3, 1899.

3 c. on 3 c.  
purple

#250,224,26\*\*.  
porly inked  
de PESO



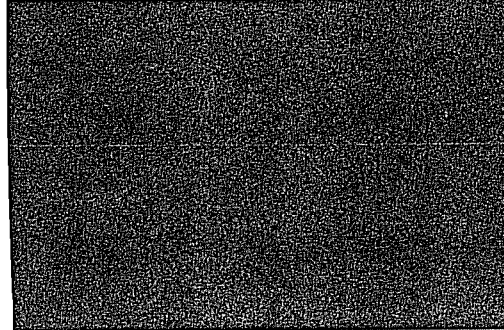
#250b,224,26\*\*.

left stamp period  
between B & A of CUBA



#250w,224,26\*\*.

right stamp broken bottom of c &  
P of PESO broken lower right serif

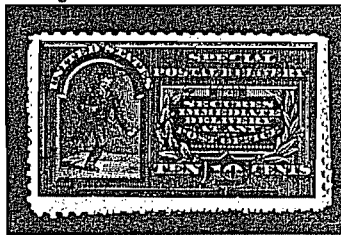


#250x,224,26\*\*.  
grayish purple



Issue of April 15, 1899 for Special Delivery.

10 c. on 10c.  
#251,E1,29\*\*.  
indigo



#251a,E1a,29a\*\*.  
no period after CUBA



Issue of November 15, 1899 for Postage Due

1 c. on 1 c.  
#252,J1,1\*\*\*  
lake



#252,J1,1\*\*\*  
pale lake



#252,J1,1\*\*\*  
broken 1



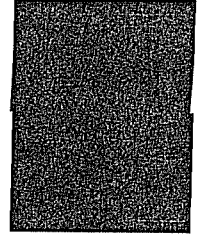
2 c. on 2 c.  
#253,J2,2\*\*\*  
lake



#253,J2,2\*\*\*  
pale lake



Pinkish E



5 c. on 5 c.  
#254,J3,3\*\*\*.  
lake



#254,J3,3\*\*\*.  
top of P dented



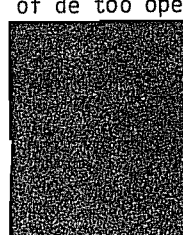
#254,J3,3\*\*\*.  
pale lake



#255,J4,4\*\*\*.  
lake



Fake  
#255,J4,4\*\*\*.  
wrong 1 and e  
of de too open



P.O.O.



\*\*Intervencion Por Los Estados Unidos De America. \*\*\* Franqueo Deficiente

Samuel T. Bothwell

# Cuba

## Blocks

#243,221,23\*\*.  
yellow green



#245,223a,25\*\*.  
orange red



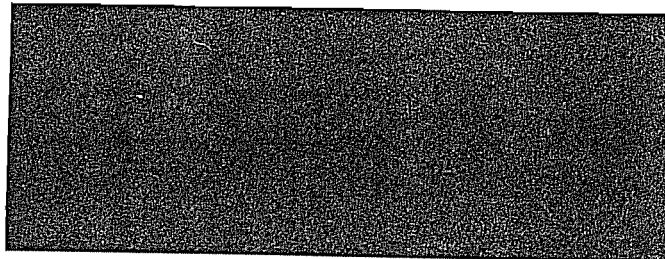
#246a,225,27\*\*.  
light blue



#247,226,28\*\*.  
brown upper right light c.



#248,222,24\*\*.  
carmine second stamp broken serif of B  
lower right stamp | behind c instead of .



#250,224,26\*\*.  
purple lower left stamp #250a



YOL 31 17 HOBND  
No Fig #

\*\*Intervencion Por Los Estados Unidos De America.

Samuel T. Bothwell

# Cuba

Strips with plate number.

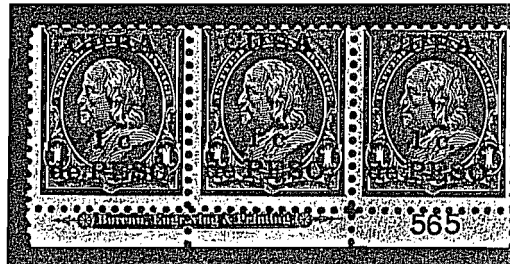
Plate numbers used for the first three issues.

1 c.-564, 565, 567, 567, 572, 573, 574, 575, 766, 767, 768, 769, 770, 771, 772, 773, 794, 795, 797, 811.

565 early print



565 late print



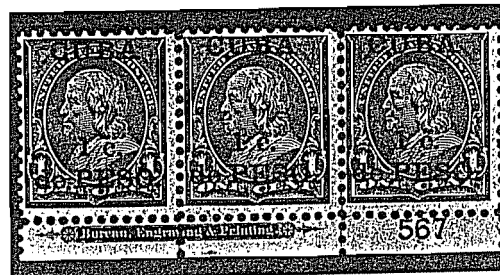
565 early print



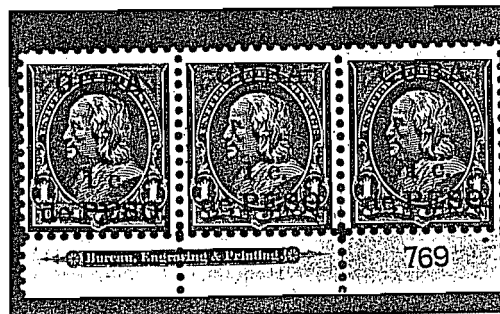
566 top stamp 243e position D1



567



769



\*\*Intervencion Por Los Estados Unidos De America.

Samuel T. Bothwell

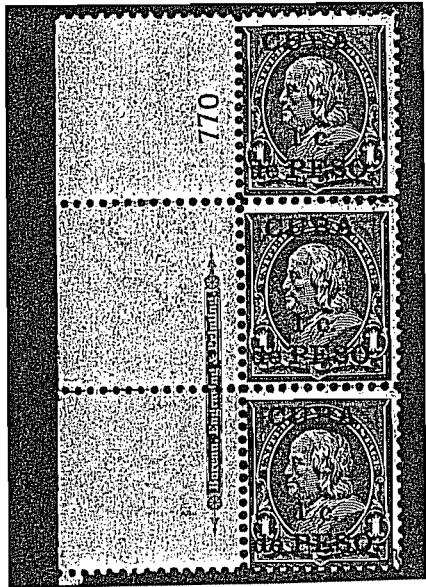
# Cuba

Strips with plate number.

Plate numbers used for the first three issues.

1 c.-564, 565, 567, 567, 572, 573, 574, 575, 766, 767, 768, 769, 770, 771, 772, 773, 794, 795, 797, 811.

770



771



772



772



773



\*\*Intervencion Por Los Estados Unidos De America.

Samuel T. Bothwell

# Cuba

Strips with plate number.

Plate numbers used for the first three issues.

2 1/2 c.-469, 475, 503, 516, 552, 556, 559, 560, 561, 562, 563, 568, 569, 570, 571, 593, 594, 595, 743, 746, 747, 748, 753, 754, 755, 756, 758, 759, 760, 761.

503



503



559



560



563



569



\*\*Intervencion Por Los Estados Unidos De America.

# Cuba

Strips with plate number.

Plate numbers used for the first three issues.

2 1/2 c.-469, 475, 503, 516, 552, 556, 559, 560, 561, 562, 563, 568, 569, 570, 571, 593, 594, 595, 743, 746, 747, 748, 753, 754, 755, 756, 758, 759, 760, 761.

570



570



578



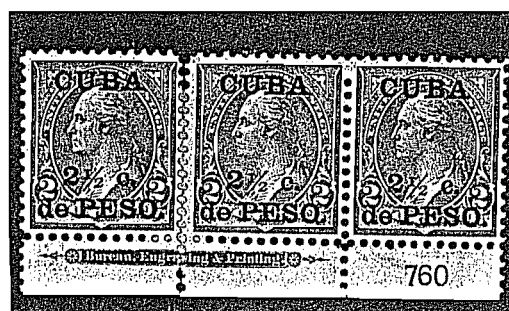
594



596



760



761



\*\*Intervencion Por Los Estados Unidos De America.

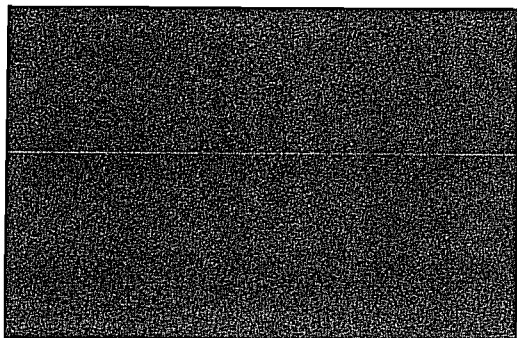
Samuel T. Bothwell

# Cuba

Strips with plate number.

Plate numbers used for the first three issues.  
5 c.-389, 390, 391, 392, 407, 408, 409, 410.

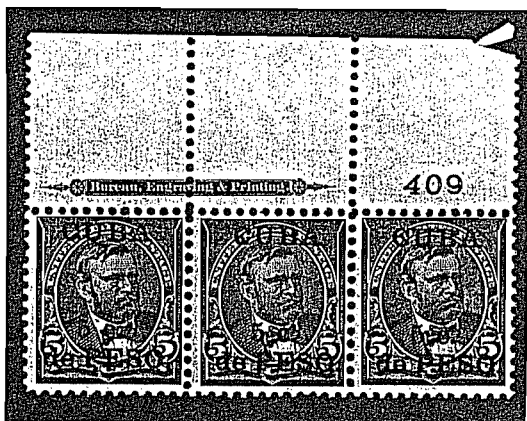
407



408



409



409



10 c.-302, 303, 305, 306.

306



2 c.-475, 506, 55

570, 571, 593, 594, 595, 596, 745, 746, 747,  
748, 753, 764, 765, 774, 775, 776, 777.

756



248, 222, 24

\*\*Intervencion Por Los Estados Unidos De America.

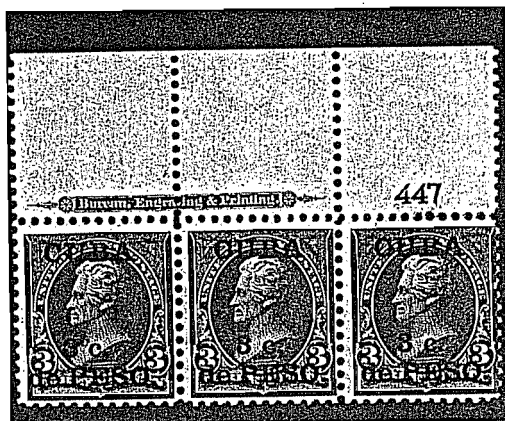
Samuel T. Bothwell

# Cuba

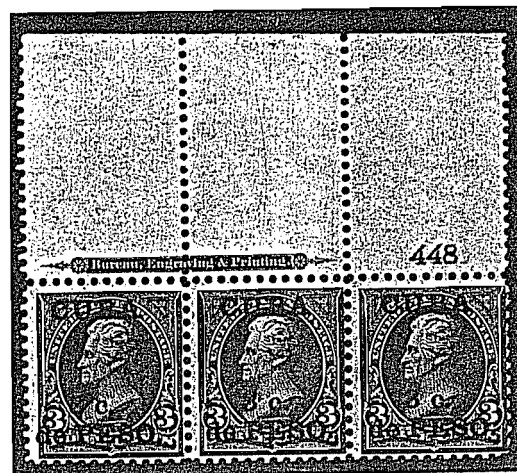
Strips with plate number.

Plate numbers used for the first three issues.  
3 c.-447, 448, 449, 450.

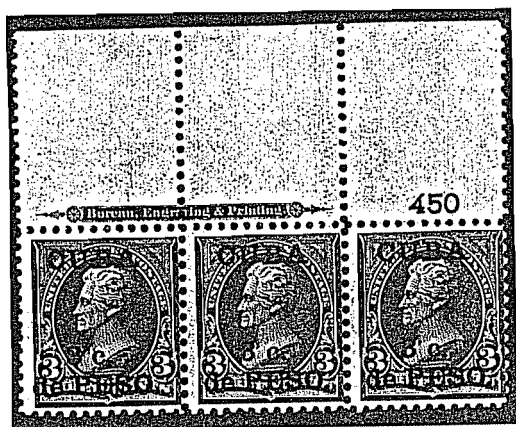
447



448



450



450

Type I 250a



\*\*Intervencion Por Los Estados Unidos De America.

Samuel T. Bothwell

# Cuba

Issue of September 1, 1899.

A separate issue for Cuba was finally prepared and shipped on July 19, 1899. Order No. 59 of the Director General of Communications placed this issue in use. Engraved and recess printed by the Bureau of Engraving and Printing. Watermarked double line capital "US-C", and perforated 12.

## 1 CENTAVO

#256,227,30\*\*. dull yellow grn.  
#256a,227,30\*\*. green  
#256b,227,30\*\*. deep green  
#256c,227,30\*\*. deep dull green



## 2 CENTAVOS

#257,228,31\*\*. carmine red  
#257a,228a,31a\*\*. scarlet vermil.  
#257b,228a,31a\*\*. scarlet  
#257c,228b,31\*\*. bright carmine  
#257d,228,31a\*\*. rose red  
#257d,228,31a\*\*. deep rose red



## 3 CENTAVOS

#258,229,32\*\*. deep lilac



#258a,229,32\*\*. light lilac

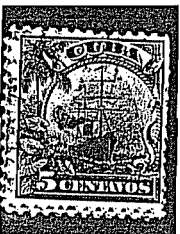


#258b,229,32\*\*. slate lilac



## 5 CENTAVOS

#259,230,33\*\*. deep blue



#259x,230,33\*\*. blue



## 10 CENTAVOS

#260,231,34. chestnut

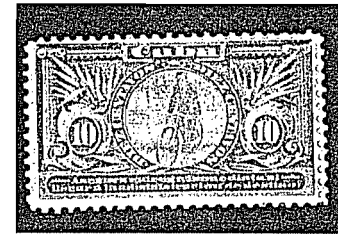


#260,231,34. brown



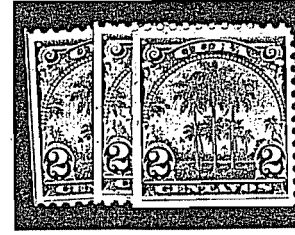
## 2 CENTAVOS

#261,32,35\*\*. orange



## 10 CENTAVOS

#262,228b,31c\*\*. carmin red booklet pane of 6



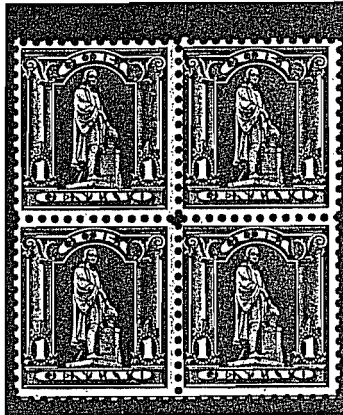
\*\*Intervencion Por Los Estados Unidos De America.

Samuel T. Bothwell

# Cuba

Blocks and strips with plate number.

#256,227,30\*\*.  
dull yellow green



#258.229.32\*\*.  
deep lilac

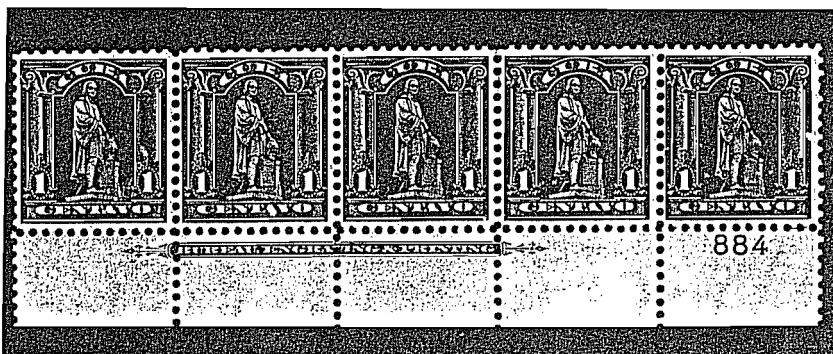
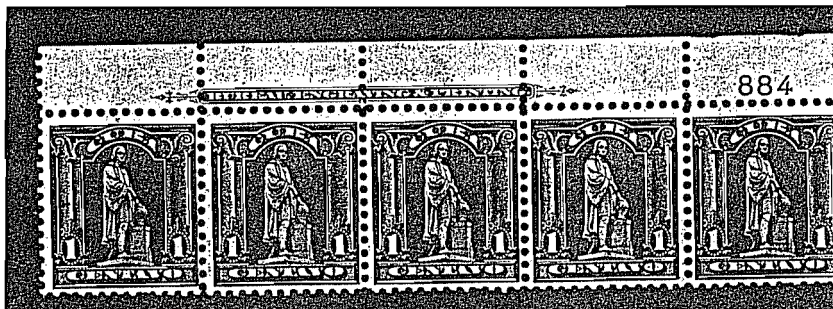


#259,230,33\*\*.  
deep blue



1 CENTAVO-879, 884, 889, 890.

844



\*\*Intervencion Por Los Estados Unidos De America.

Samuel T. Bothwell

# Cuba

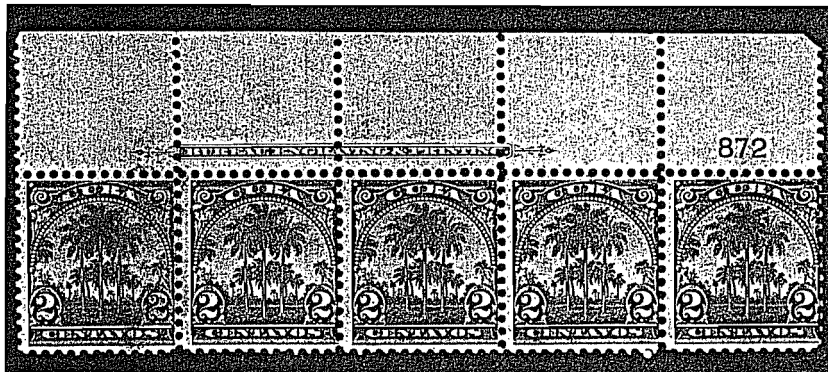
Strips with plate number.

2 CENTAVOS-871, 872, 873, 874.

#257b,228a,31a\*\*.

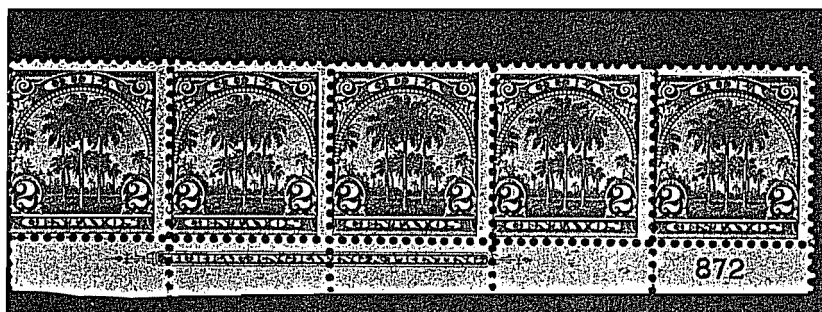
scarlet

872



#257c,228,31\*\*.

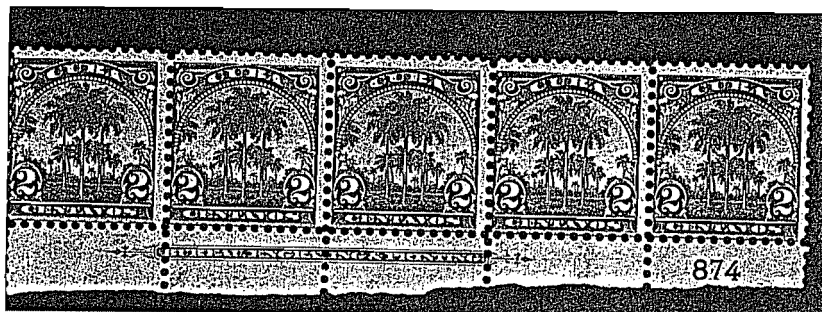
bright carmine



#257,228,31\*\*.

carmine red

874



\*\*Intervencion Por Los Estados Unidos De America.

Samuel T. Bothwell

# Cuba

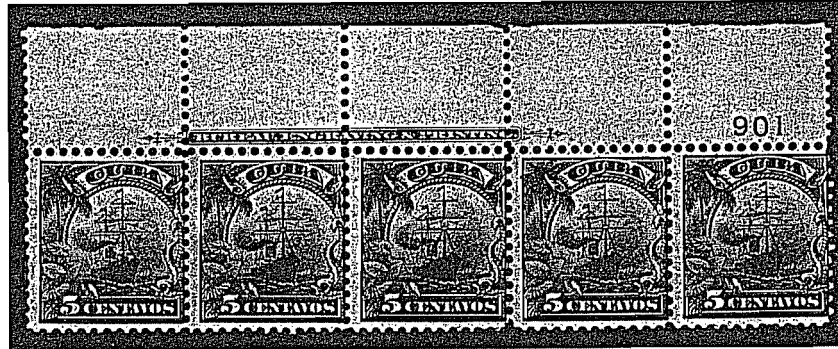
Strips with plate number.

5-CENTAVOS-899, 901, 902, 903.

#259,230,33\*\*.

deep blue

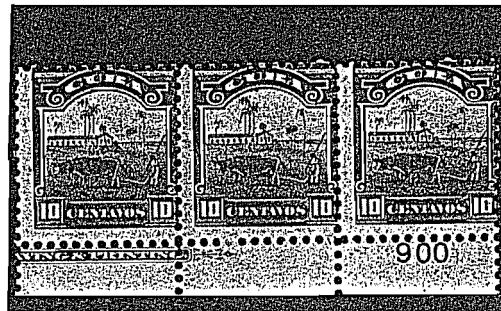
901



10 CENTAVOS-900.

#260,231,34\*\*.

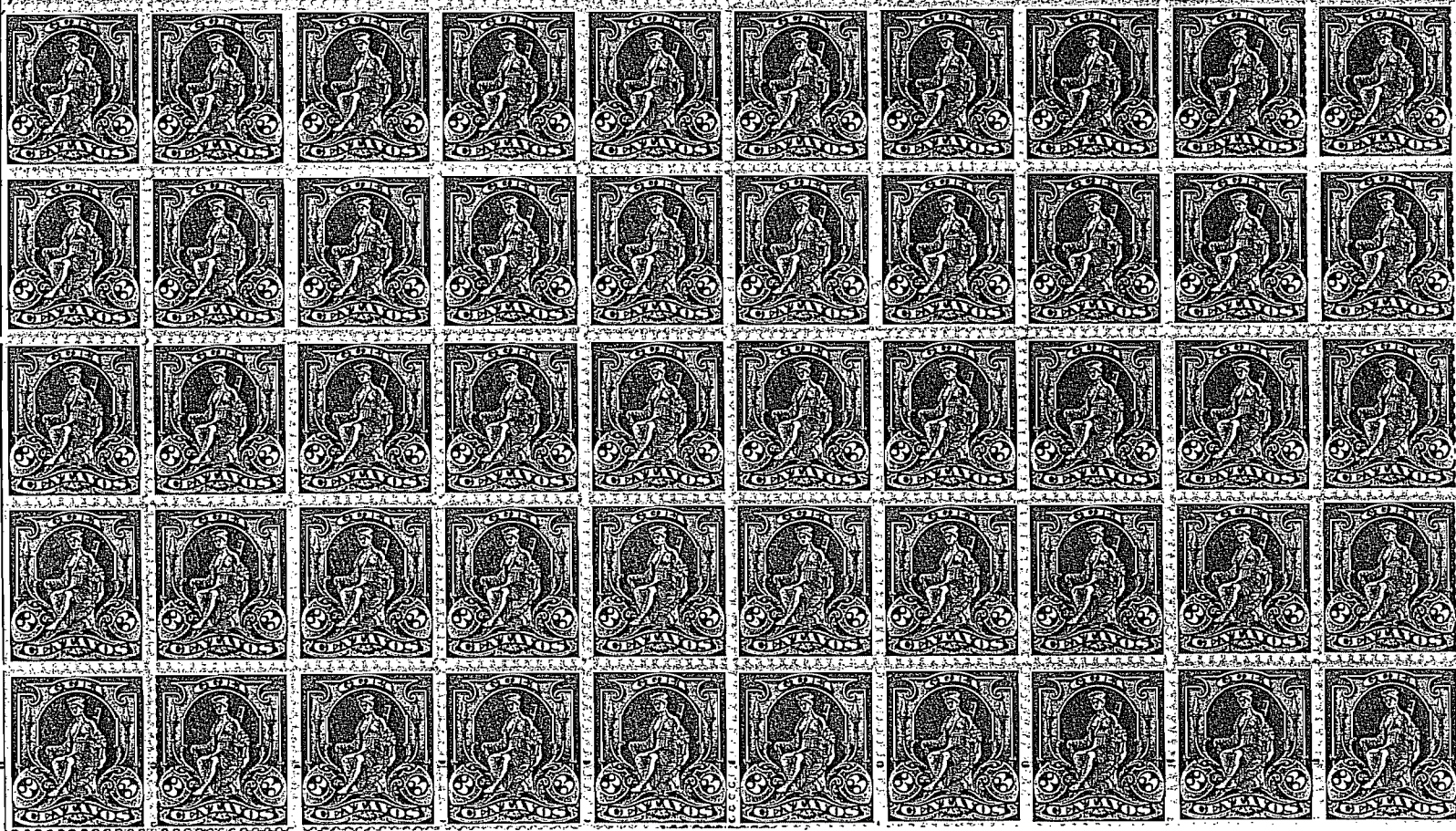
chestnut



\*\*Intervencion Por Los Estados Unidos De America.

*Cuba*

894



*Samuel T. Botwell*



LIBRARY OF THE UNIVERSITY OF CHICAGO

894