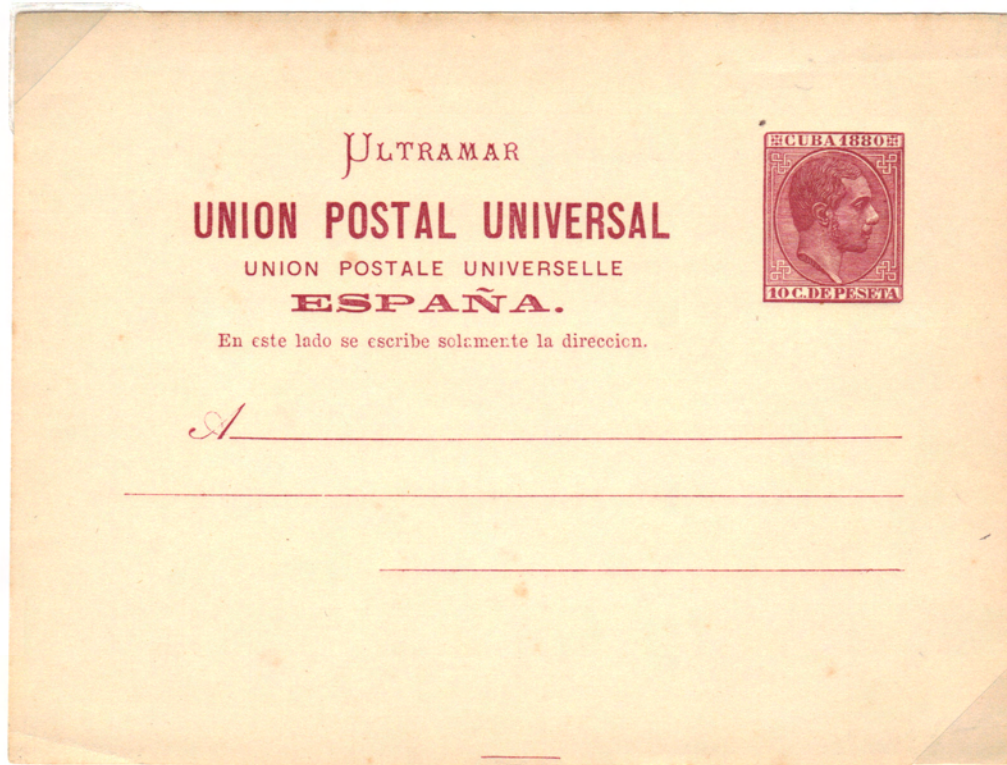
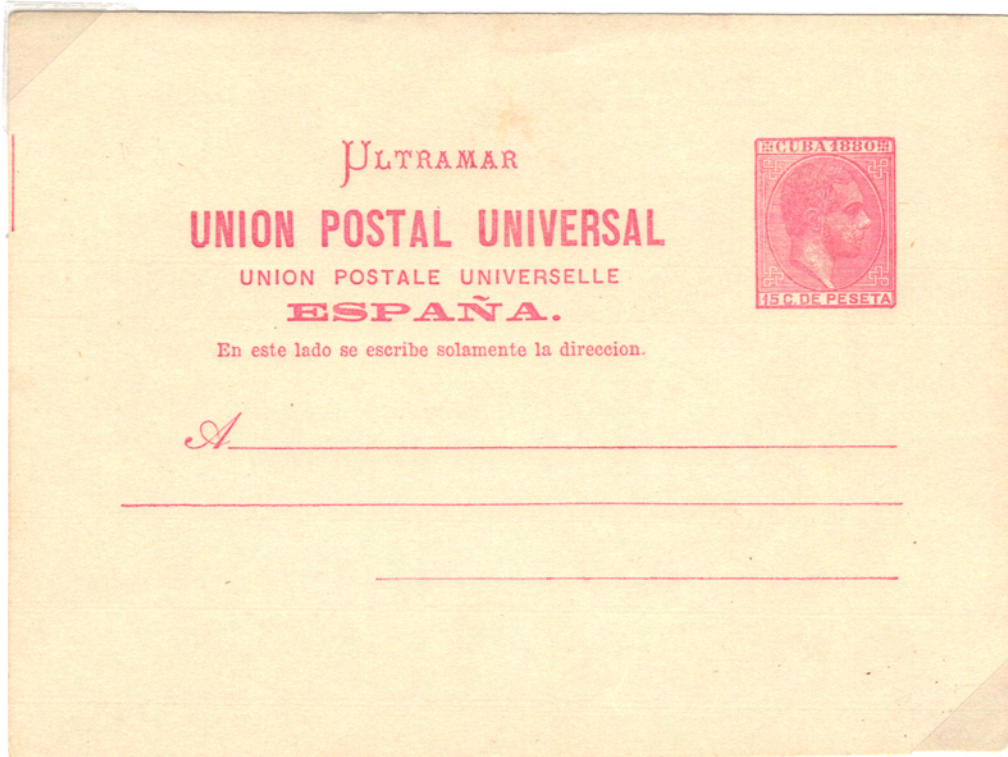


This issue, the UPU cards, represented a substantial rate decrease. From the previous 25 centimos uniform rate, to 10 centimos for domestic use and 15 centimos for international use. In spite of this drastic reduction, the low usage of postcards continued to disappoint the postal officials.

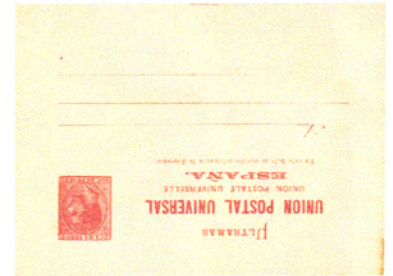
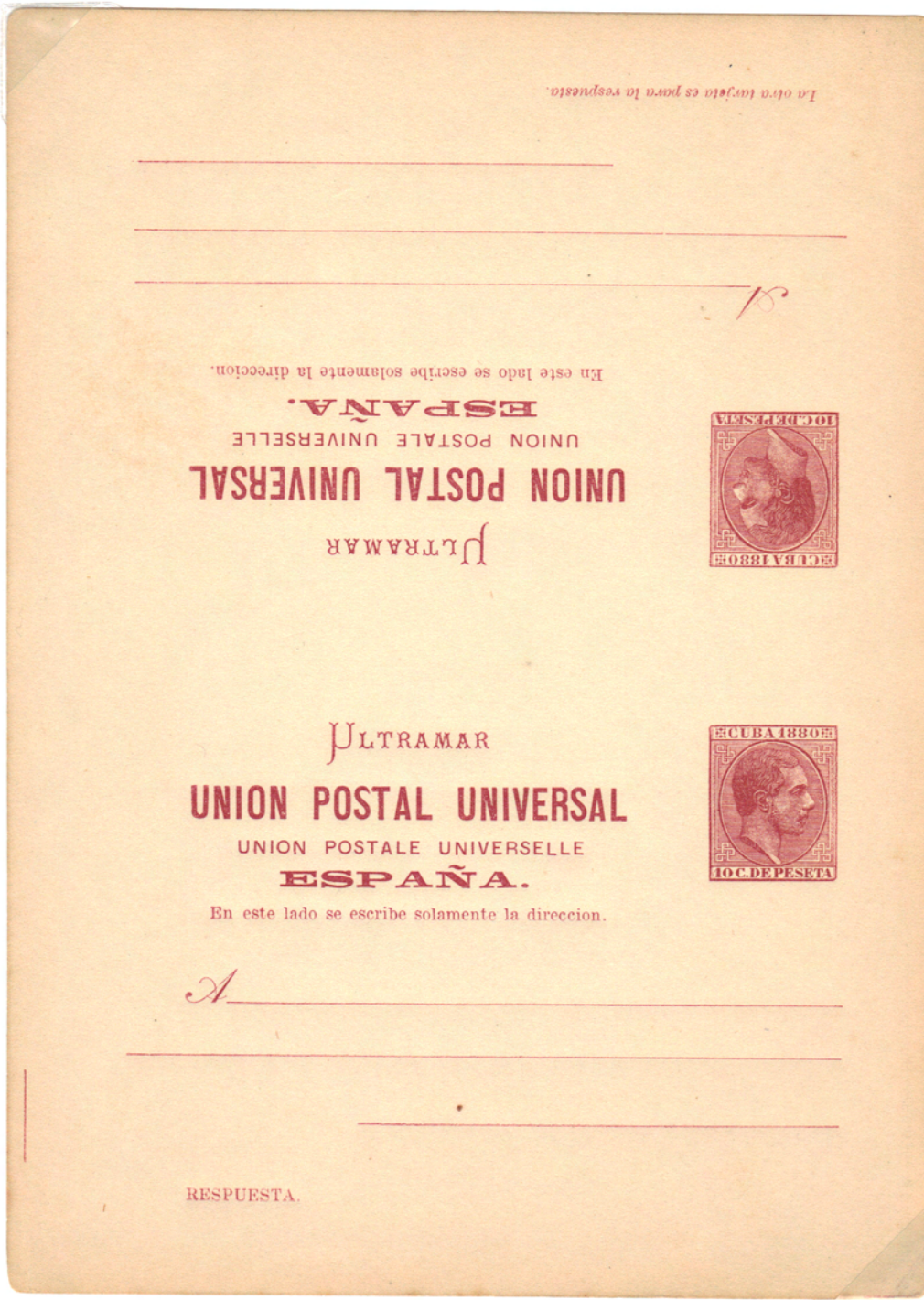


10 c. Domestic Rate.



15 c. International Rate.

This year, the post office decided to make Paid Reply cards available in Cuba. Spain had been issuing Paid Reply cards for their use since their first postcard issue, in 1873.




Paid Reply Cards were printed from the same plates as single cards. In order to print reply cards, however, the stamp on the message half was moved to the left of the text while the reply half was simply rotated 180°. Additionally, footnotes had to be added to each half.



RESPUESTA

R

En este lado se escribe solamente la direccion.




15 C. DE PESETA

ULTRAMAR

UNION POSTAL UNIVERSAL

UNION POSTALE UNIVERSELLE

ESPAÑA.



15 C. DE PESETA

ULTRAMAR

UNION POSTAL UNIVERSAL

UNION POSTALE UNIVERSELLE

ESPAÑA.

En este lado se escribe solamente la direccion.

A

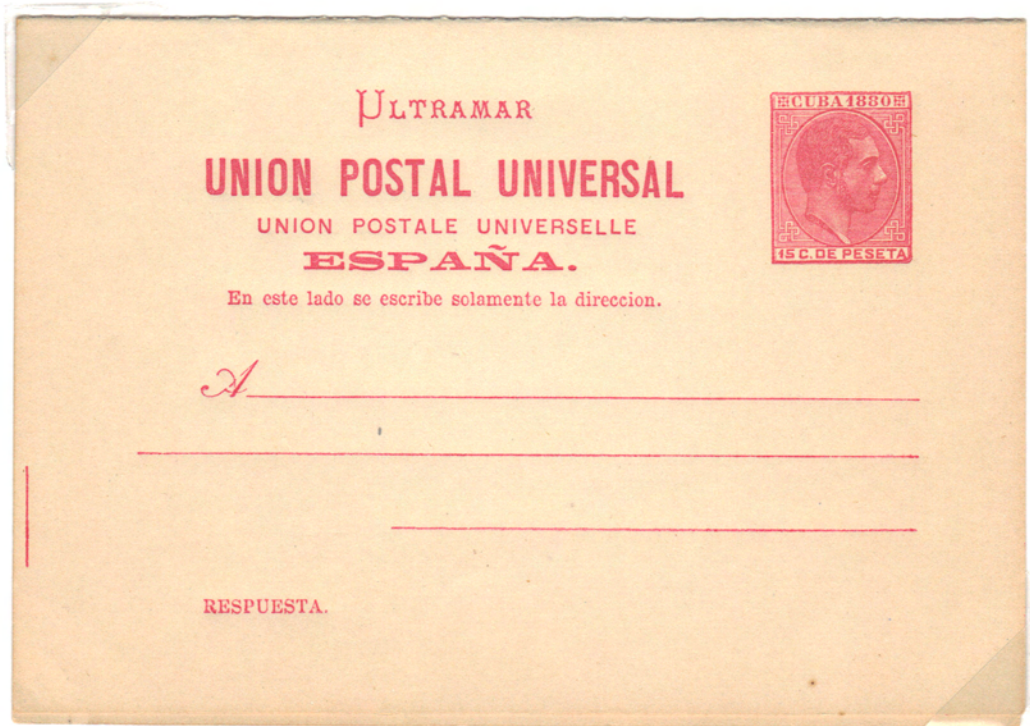
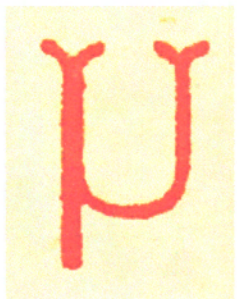
La otra tarjeta es para la respuesta.

The paid reply cards of 1880 are not known used.

The broken "U" of Ultramar is the most common plate variety, occurring in all values of the 1880 - 1882 issues. There are two types, however, as follows:

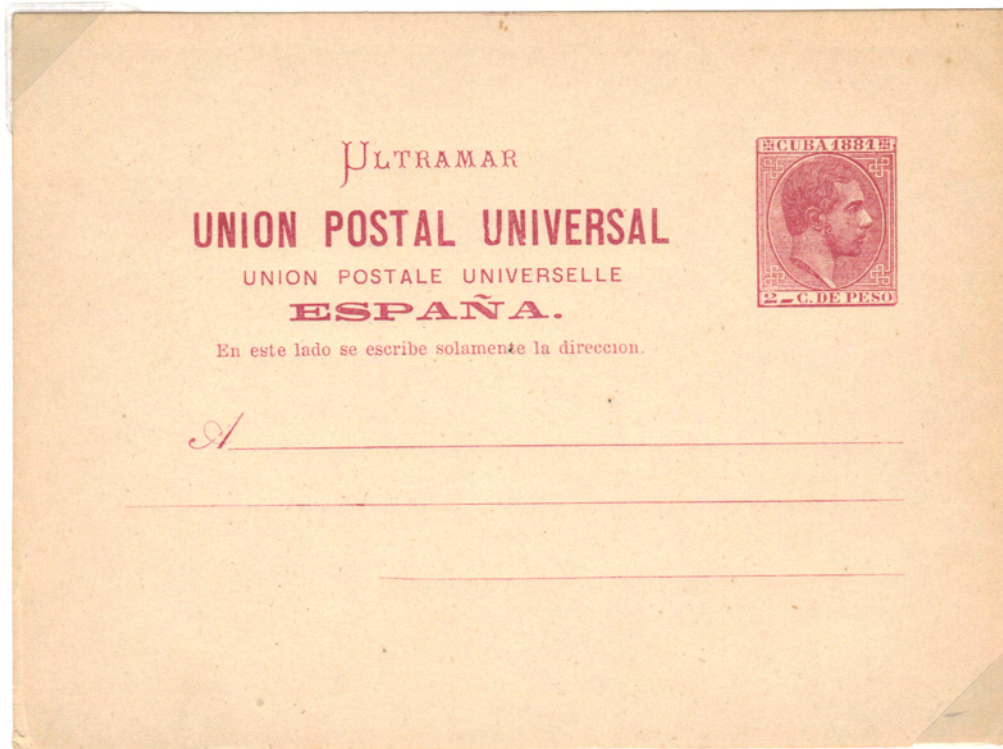


Type a. - Has a missing serif at the top left corner.

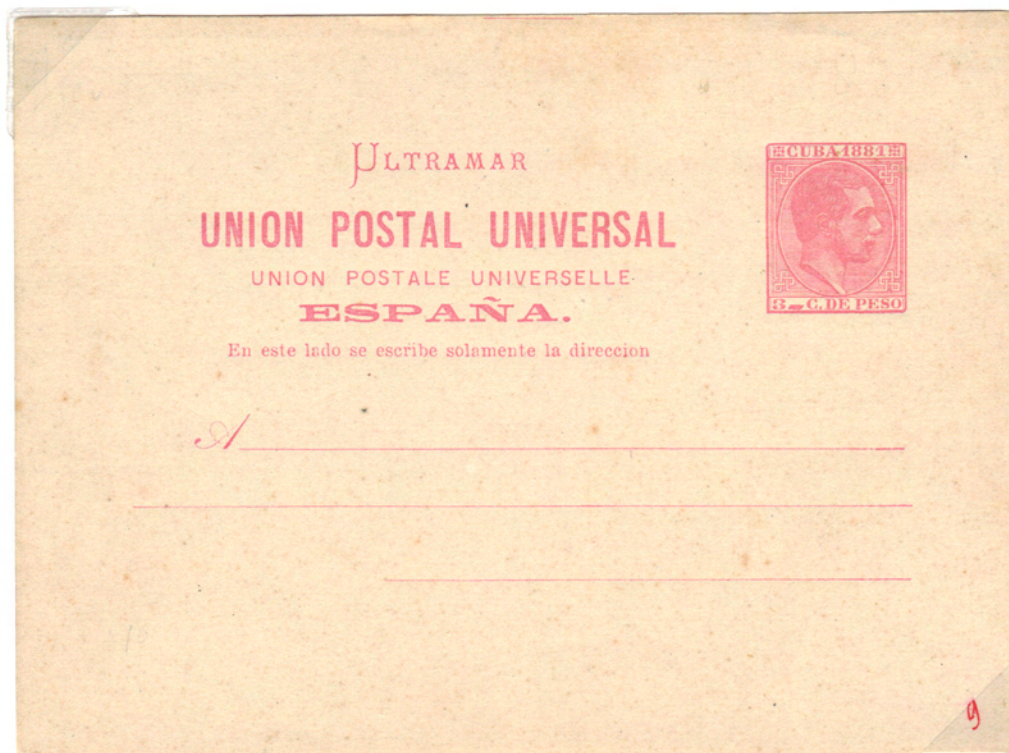


Type b. - Serif is intact. Always found with the variety "S" of POSTAL ending in a point.

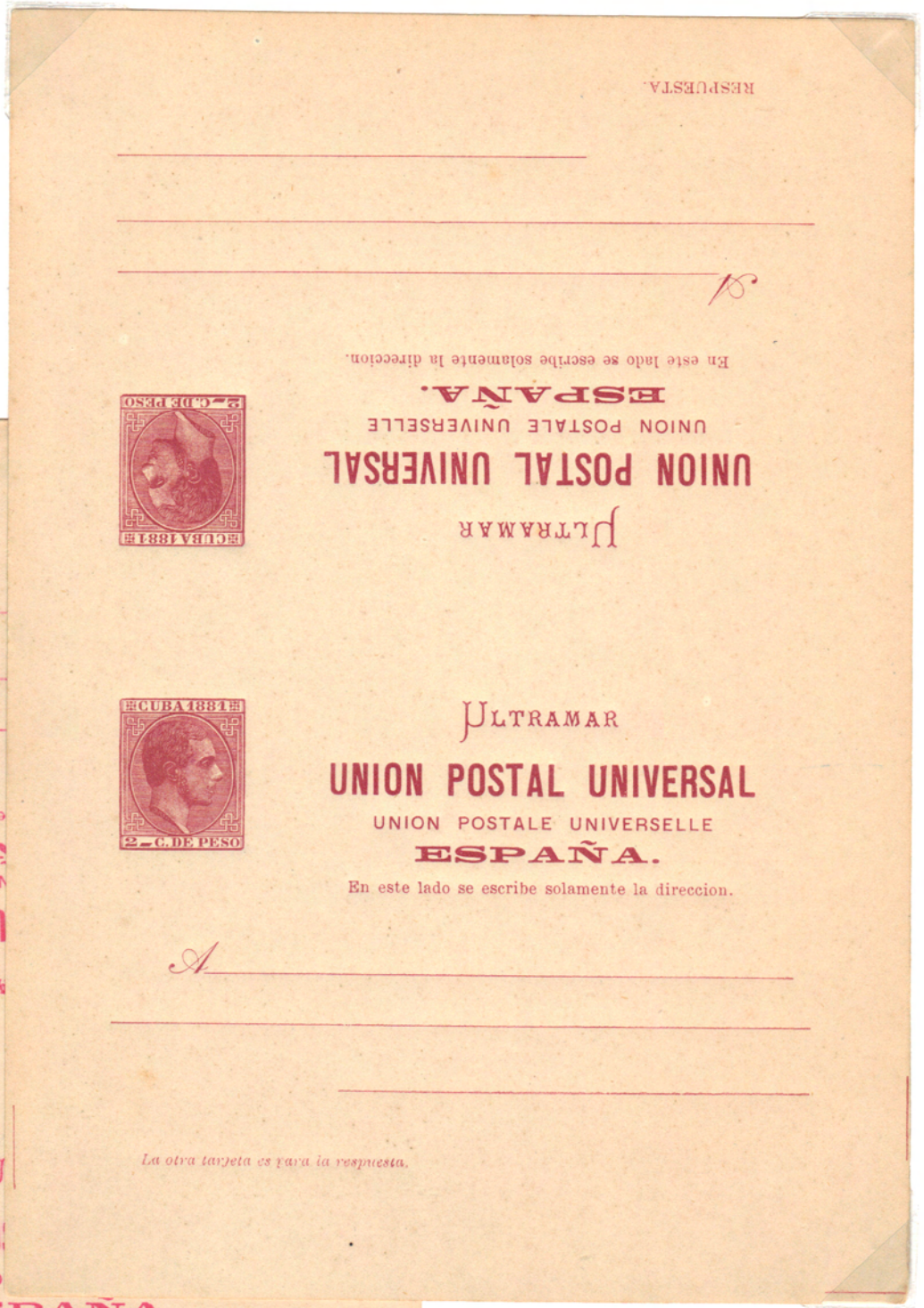
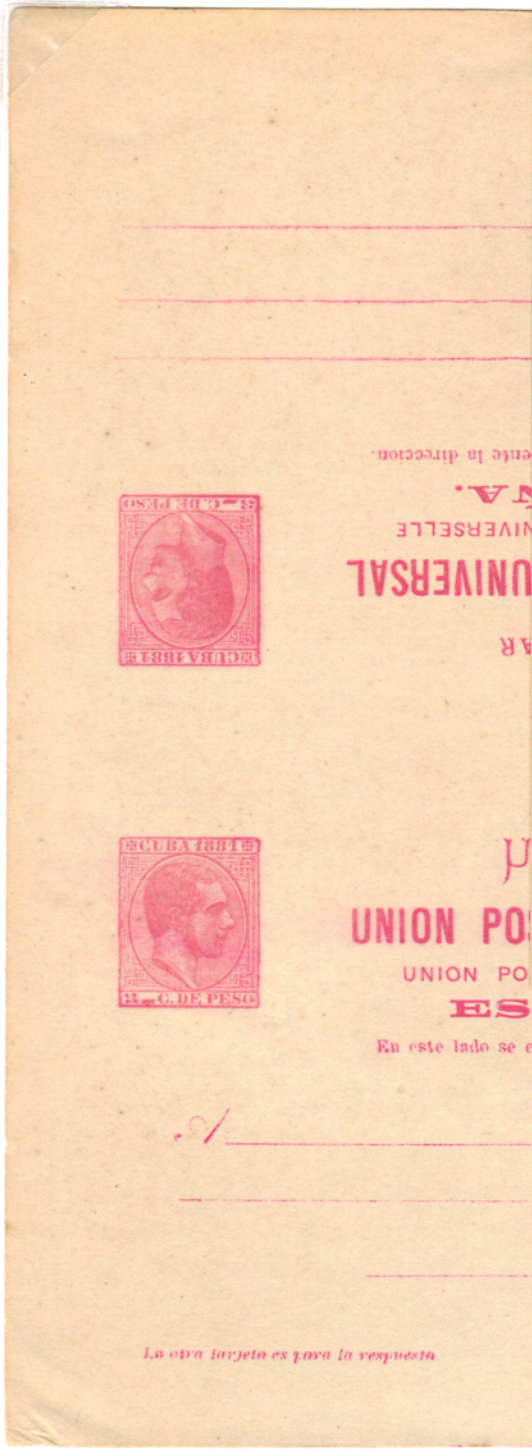
Same format as in 1880, but with a new date. The currency is now in centavos de Peso, instead of centimos de Peseta (1Peso = 5 Pesetas).



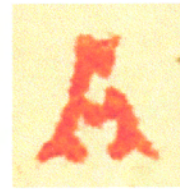
2 c. Domestic Rate.



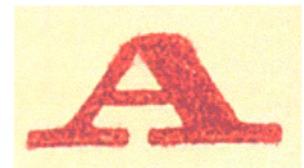
3 c. International Rate.



The paid reply cards of 1881 are not known used.



Broken 2nd "A" of Ultramar.
Variety # 16*



Broken 2nd "A" of ESPAÑA,
at top left.
Variety # 11



"S" of POSTAL ending in a point.
Variety # 6

*Based on original research co-authored by this Exhibitor, that identified all the plate varieties of the 1880-1882 paid reply cards.

ULTRAMAR
UNION POSTAL UNIVERSAL
UNION POSTALE UNIVERSELLE
ESPAÑA.



ESPA

Broken "E" and 1st "A" of ESPANA.
Variety # 13



ULTRAMAR
UNION POSTAL UNIVERSAL
UNION POSTALE UNIVERSELLE
ESPAÑA.

NIV

Nicked "N" and "V" of UNIVERSAL.
Variety # 2

ULTRAMAR
UNION POSTAL UNIVERSAL
UNION POSTALE UNIVERSELLE
ESPAÑA.



A

Broken 2nd "A" of ESPANA.
Variety # 12

ULTRAMAR
UNION POSTAL UNIVERSAL
UNION POSTALE UNIVERSELLE
ESPAÑA.



U N

Nicked "U" of UNION
& "N" of UNIVERSAL.
Variety # 4

ULTRAMAR
UNION POSTAL UNIVERSAL
UNION POSTALE UNIVERSELLE
ESPAÑA.



U

Smashed right side of
the "U" of UNIVERSAL.
Variety # 5

En este lado se escribe solamente la direccion.

A _____

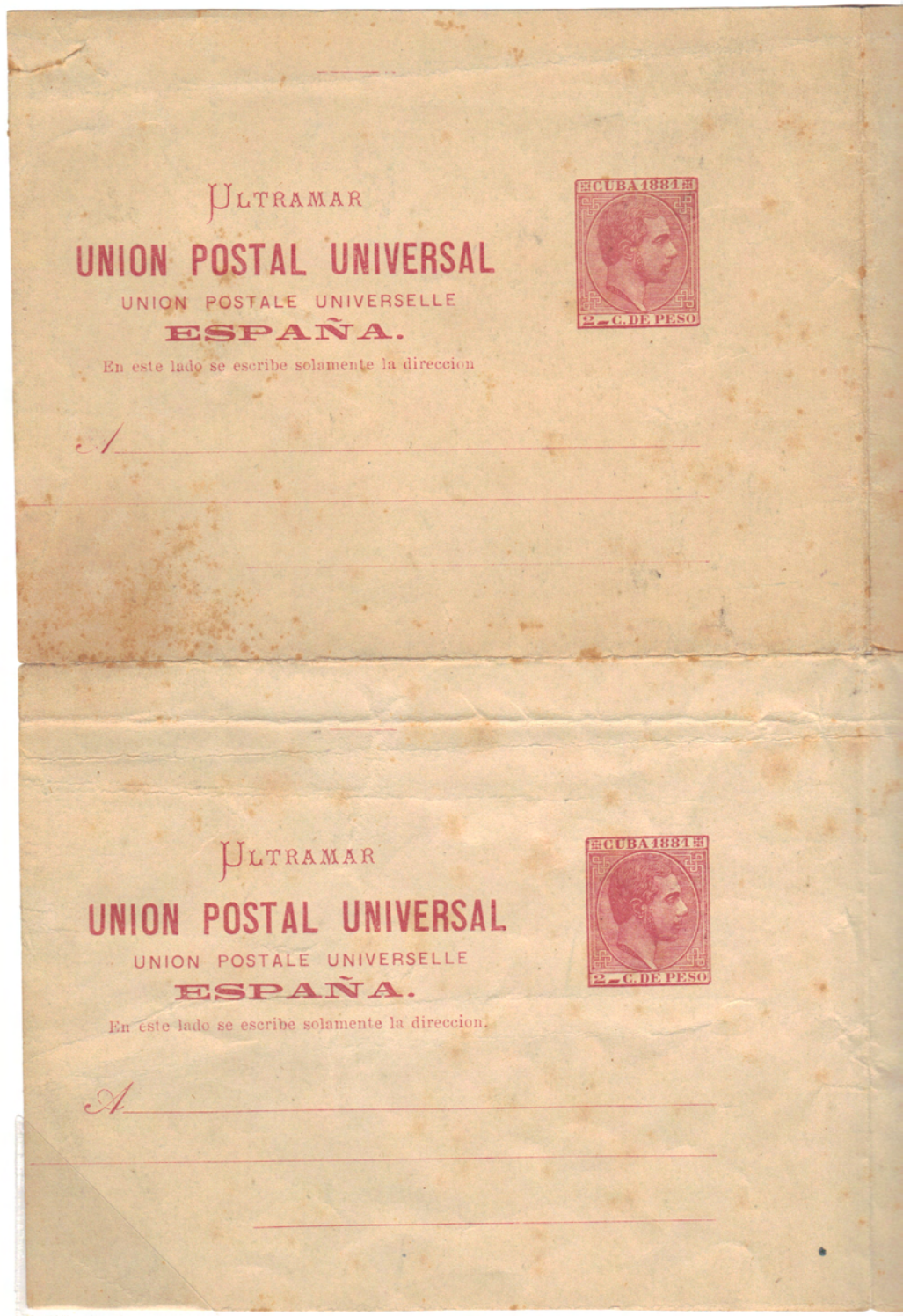
RESPUESTA.

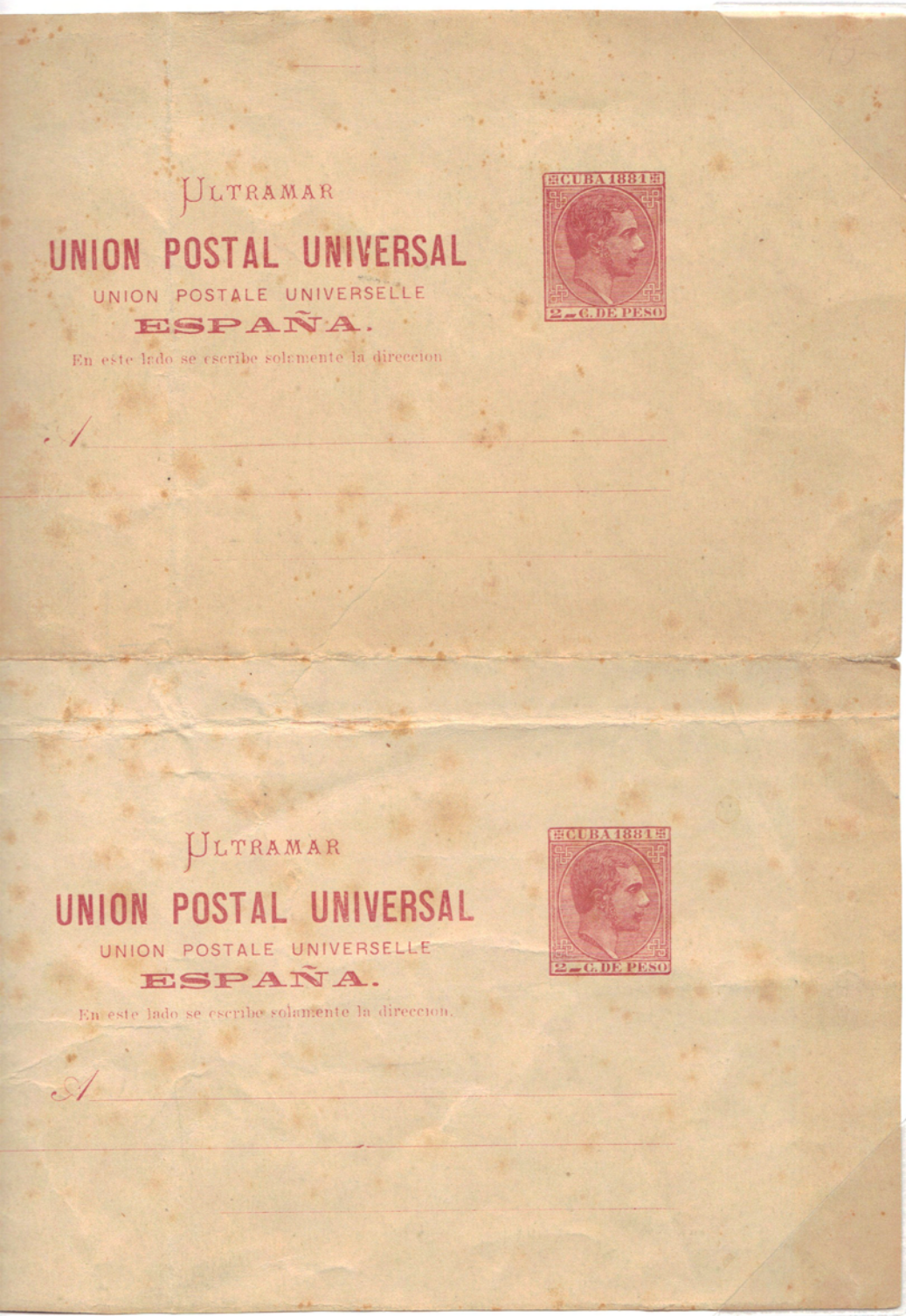
None of the Spanish Postcards were sold to the public in multiples, and this issue was no exception. Large multiples, however, have proven most useful in facilitating the plating of other issues. The exhibitor is hopeful that similar items may yet allow the plating of the 1880 - 1882 single cards.

Plate varieties found on this block (clockwise from upper left): Variety # 3 - No period after dirección; Variety # 2 - Nicked "N & V" of UNIVERSAL; Variety # 10 - Damaged "L" of UNIVERSAL & "P" of ESPAÑA; and Variety # 19 - Nicked "R" of UNIVERSAL. (Plate varieties based on exhibitor's published research.)



Variety # 19.





Variety # 2



Variety # 10

1881
Alfonso XII

Double Impression, one inverted
on 2 c. single Postcard



Upright impression is Variety # 18 - Nicked Ñ of ESPAÑA.
Inverted impression is Variety # 11 - Rounded off second A of ESPAÑA

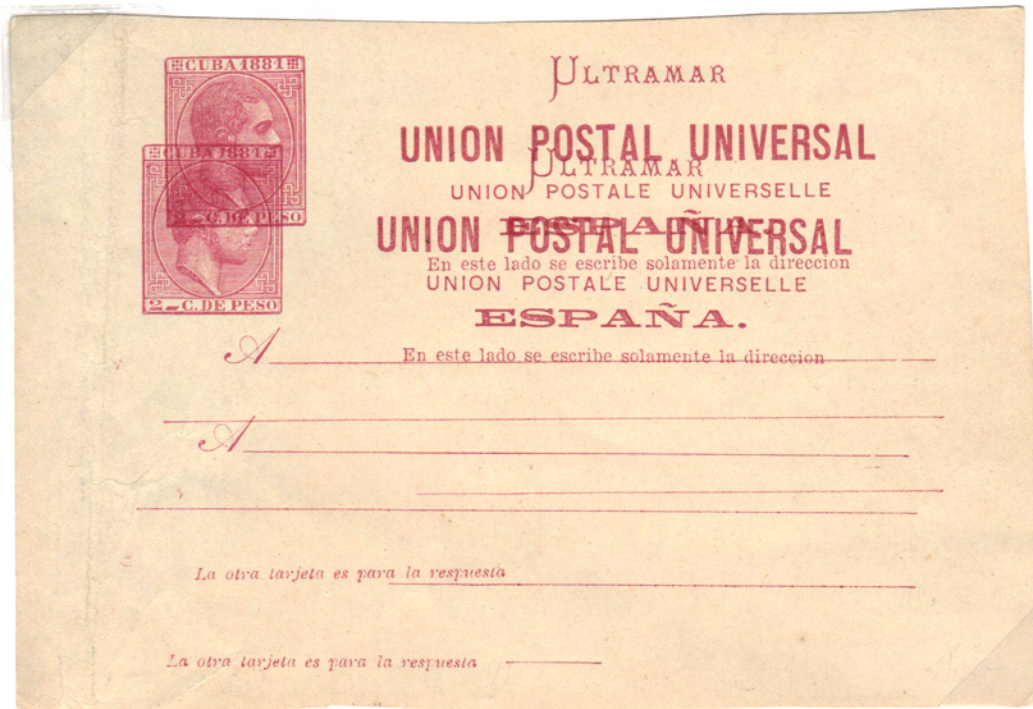
Double Impression
on 3 c. single Postcard.



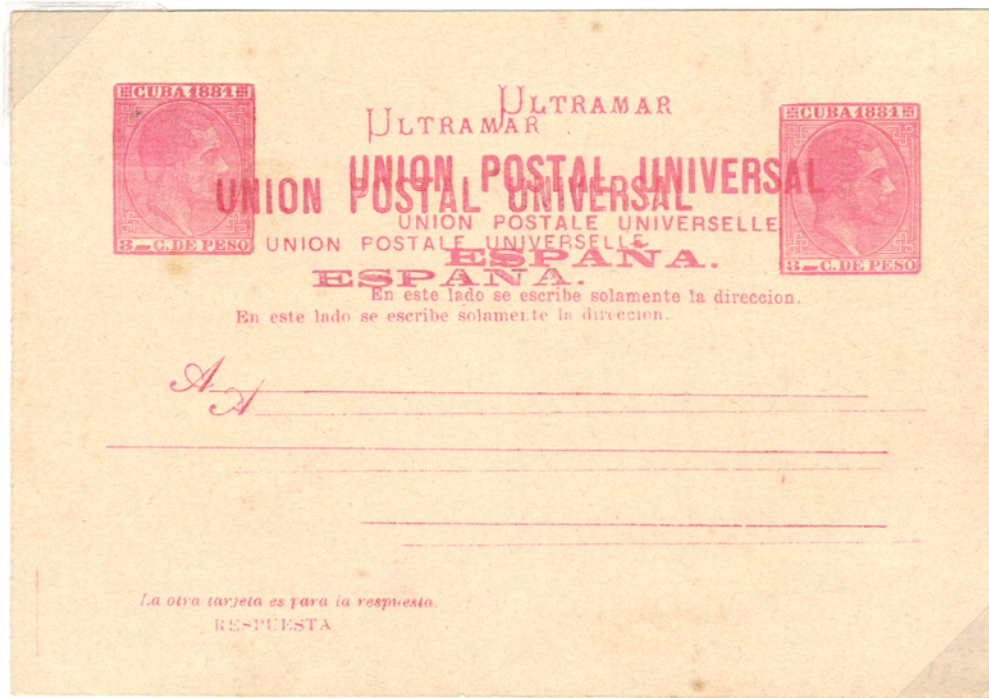
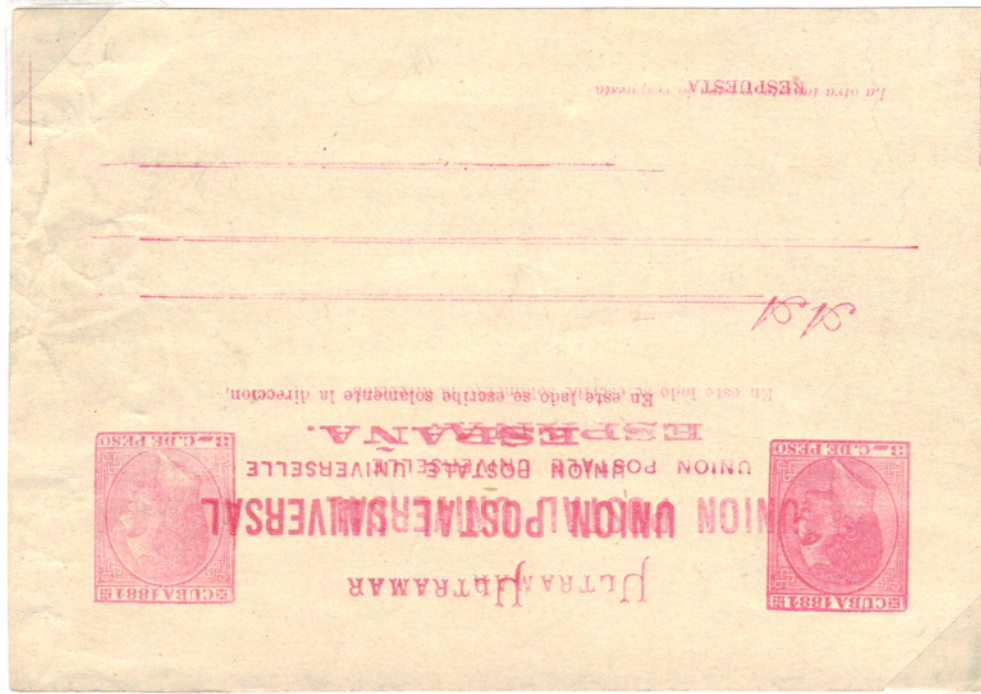
Double
Impression of
Reply side.



Double
Impression of
Message side.

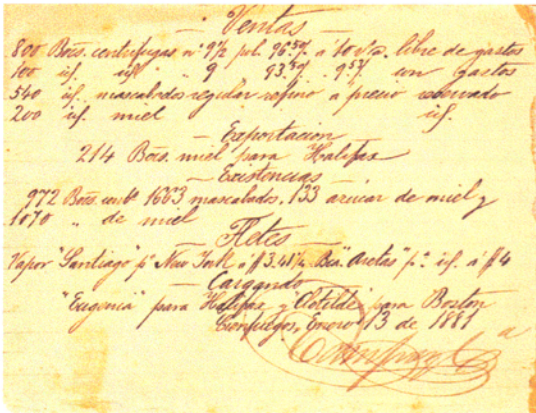
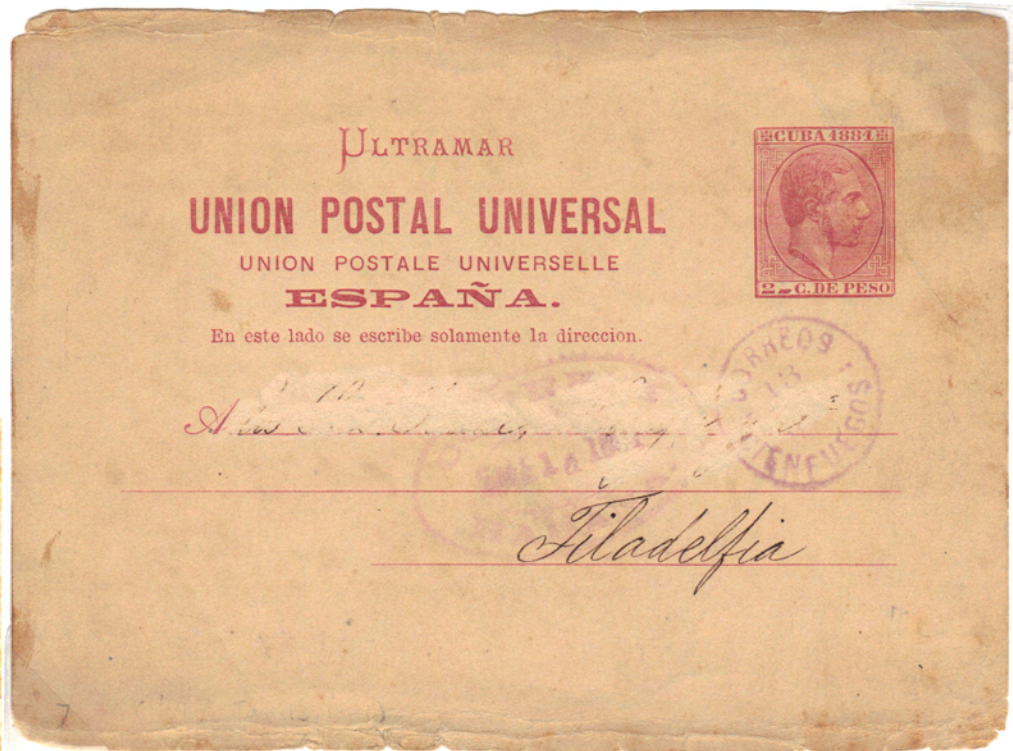


Matched halves showing double impressions of
the message and reply sides.



Matched halves of Paid Reply cards, each card showing impressions of message and reply cards.

Businesses started to realize the convenience of this inexpensive way of communication.



2 c. Cienfuegos to Philadelphia, PA, January 13, 1881.
Oval receiving mark Habana, January 14, 1881.

Used within first two weeks of issuance.

Scan of message side



3 c. Puerto Principe to Liverpool, England, December 7, 1881.



3c. Used within Matanzas, April 23, 1881.



3 c. Fiscal Usage. Canceled with the seal of the Revenue Office at Sagua La Grande.