

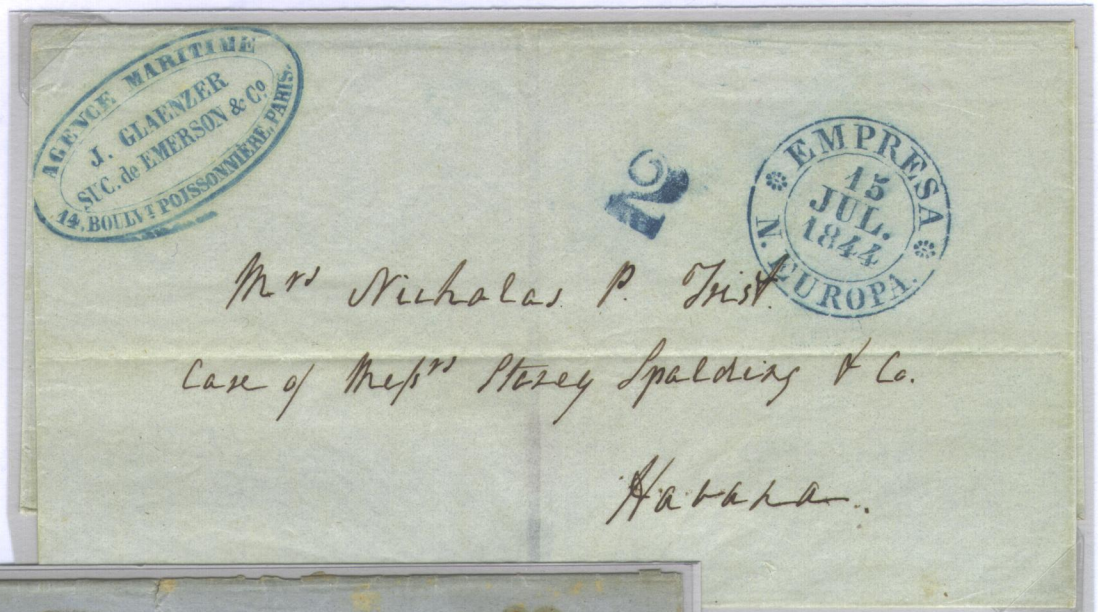
EMPRESA

Incoming Mail Markings :

"N. EUROPA," "N. AMERICA" and "INDIAS" cds

Transatlantic and Hemispheric Mail

1844. Paris to Havana. Single weight letter.



1848. Tampico, Mexico, to Havana. Sent prepaid (one shilling) by the British steamer *Great Western* to Cuba. Single weight letter.

This is the only known example of this marking in red.



1846 (December 13). Galveston, shortly after the Texas Republic joined the Union, to Havana. Sent privately by the Spanish Consul via New Orleans. Single weight letter.



EMPRESA
Incoming Mail Markings :

*Hemispheric and Transatlantic Mail
U.S.A. and France to Cuba*

"N. AMERICA" cds

1848. New York to Havana. Privately carried to Charleston where it entered the mail and sent prepaid (12½ cents) by the American contract steamer Isabel on its second trip to Havana. Single weight letter.

Earliest example outgoing contract mail.	reported of an American steamship mail.
--	---



1850. Paris to Havana via New York. Sent prepaid (15 decimes) by the British steamer *Canada* (Cunard) via Liverpool. It was then carried by the American steamer *Isabel* to Havana where it was charged one silver real postage due. Prepayment all the way from France to Cuba at the time was not possible, but in this case it was evidently accepted and the letter was forwarded with a 12½ cent credit to the U.S.

EMPRESA

Incoming Mail Markings :

“N. AMERICA” and “N. EUROPA” cds

Transatlantic and Hemispheric Mail
U.S.A. to Cuba

1851. Naples, Italy, to Havana via New York. Sent under cover to Moses Taylor & Co. in New York who forwarded it privately (intended by the steamer *Ohio*) to Cuba. The *Empresa* “N.Europa” cds was applied erroneously, although the rate assessment was correct for a single weight letter from North America.



1851. New Orleans to Havana. Sent prepaid (12½ cents) by the American contract steamer *Falcon*. Single weight letter charged one silver real postage due.

EMPRESA
Incoming Mail Markings :

*Transatlantic and Hemispheric Mail
Switzerland and Venezuela to Cuba*

“N. AMERICA” and “N. EUROPA” cds

1843. Geneva, Switzerland, to Havana, via Le Havre. It was prepaid to France and then sent as a ship letter to Cuba. Single weight letter.



1851. La Guayra, Venezuela, to Santiago de Cuba via St. Thomas and Havana. Sent prepaid (two reales) by merchant ship to St. Thomas where it was forwarded by the “Foreign Letter Office”. It was then carried privately to Havana where the “2” was obliterated and charged one silver real postage due.



Latest recorded use of an Empresa marking.

EMPRESA
Incoming Mail Markings :

Transatlantic Mail
Germany to Cuba

“N. EUROPA” cds

1847. Prepaid letter
from Germany to
Sagua la Grande,
Cuba, via France.
Single weight letter.



1848. Leipzig,
Germany, to Sagua la
Grande, forwarded in
Liverpool and Havana.
Sent prepaid (two
shillings three pence) by
RMSP Co. steamer.
Single weight letter.

EMPRESA

Transatlantic Mail

Incoming Mail Markings :

Framed "G" and Oval "ESPAÑA" datestamp.

1851. Madrid to Sancti Spiritus, Cuba, via Havana. Sent unpaid to Cuba, where it was handled by the *Empresa*, that applied its framed "G" in blue. The purpose of this marking is unknown, but we speculate that it may indicate "Gratis" (free) since this letter is addressed to a retired Colonel.

One other example recorded.



1851. Santander, Spain, to Havana via Cadiz. Unpaid single weight letter. This postmark was generally applied on the reverse of covers.

EMPRESA
Incoming Mail Markings :

*Transatlantic Mail
 Between Spain and Cuba*

Oval "ESPAÑA" and Semicircular datestamps.

1850. Bilbao, Spain, to Havana via Cadiz. Unpaid double weight letter. Less than ten examples are known of this handstamp, used only during 1850-51.



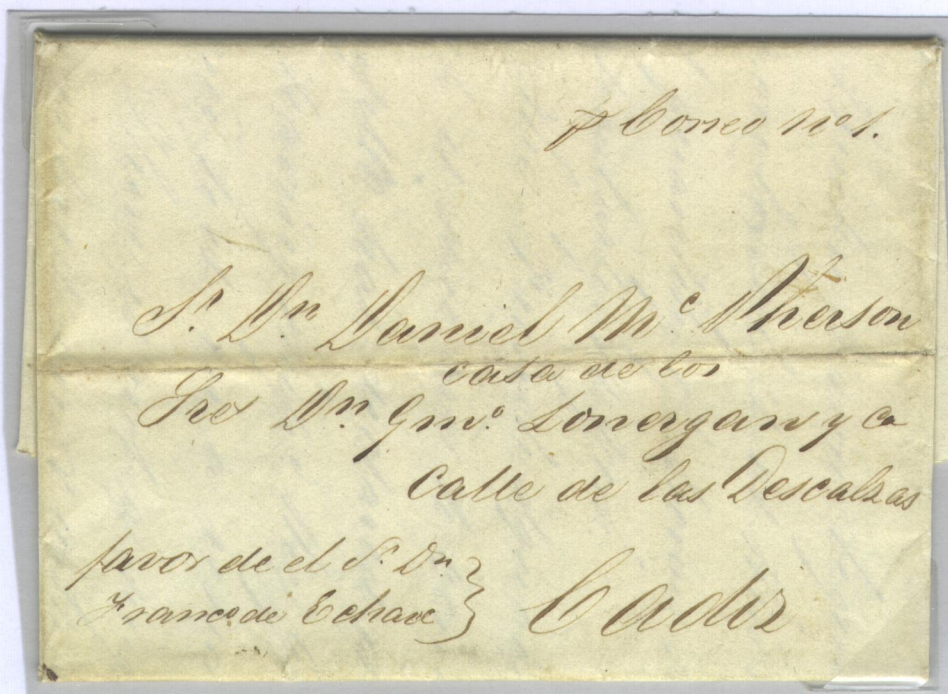
1843. Puerto Principe, Cuba to Cataluña, via Havana. Prepaid single weight letter (2 reales inland fee and 2 reales for maritime crossing). This is the only known use of the rare semicircular postmark as an origin and not an incoming marking.

EMPRESA
Steamship Markings :

Transatlantic Mail
Cuba to Spain

“CORREO MARITIMO” (1)

1838. Havana to Madrid. Sent privately on board the *Empresa* ship *Correo Marítimo No. 1* had its own postmark, created in 1842.



1848. Prepaid letter from Havana to Cadiz. The oval FRANCO has been recorded used by the *Empresa* between 1843 and 1851.

Transatlantic Mail Spain to Cuba

Al Juez Gral de Biene de Difuntos
de la

32

Habana

Madrid to Havana sent on board the *Empresa* ship *Correo Marítimo No. 1*. Official mail was carried free by the *Empresa* but postage fees were recorded for accountancy purposes.

EMPRESA

Steamship Markings :

Transatlantic Mail
Cuba to Spain

"CORREO MARITIMO" (1)

1843. Prepaid letter from Havana to Madrid. The straight line FRANCO was used in 1842-43.



1850. Prepaid letter from Matanzas to Barcelona via Havana. Very unusual, if not unique combination of markings.

EMPRESA
Steamship Markings :

Transatlantic Mail
Cuba to Spain

"CORREO MARITIMO" (1 & 2)

1844. Prepaid letter
from Havana to
Madrid. The
semicircular FRANCO
was used in 1842-43.



1844. Prepaid letter
from Havana to
Barcelona. The
addressee was charged
an additional
surcharge of 4
maravedis for a road
tax in the region of
Catalonia.

EMPRESA
Steamship Markings :

Steamship Mail
Between Cuba and Spain

"CORREO MARITIMO" (1 & 2)

c1842. Tenerife, Canary Islands, to Havana. Unpaid double weight letter. There are about a dozen examples of the "CORREO MARITIMO No. 1" in red, and this is the only one with the straightline marking "CANARIAS".



1842. Havana to Madrid. It was sent prepaid by a steamer of the Empresa. There are less than ten examples of the "CORREO MARITIMO No. 2" in red.

EMPRESA
Steamship Markings :

*Hemispheric and Transatlantic Mail
 Puerto Rico and Spain to Cuba*

"CORREO MARITIMO" (2)

1842. San Juan, Puerto Rico, to Havana. Unpaid single weight letter carried by the *Empresa* steamer *Correo Maritimo* No. 2. Very unusual, possibly unique combination of markings. The steamship marking shows both the numbers 2 and the top of the 1.



1843. Madrid to Havana. Unpaid single weight letter.

There is one other reported example of this marking in yellow (shown above).

EMPRESA
Steamship Markings :

*Transatlantic Mail
between Cuba and Spain*

“CORREO MARITIMO” (2)

1843. Prepaid letter
from Matanzas to
Madrid. Very
unusual combination
of markings.



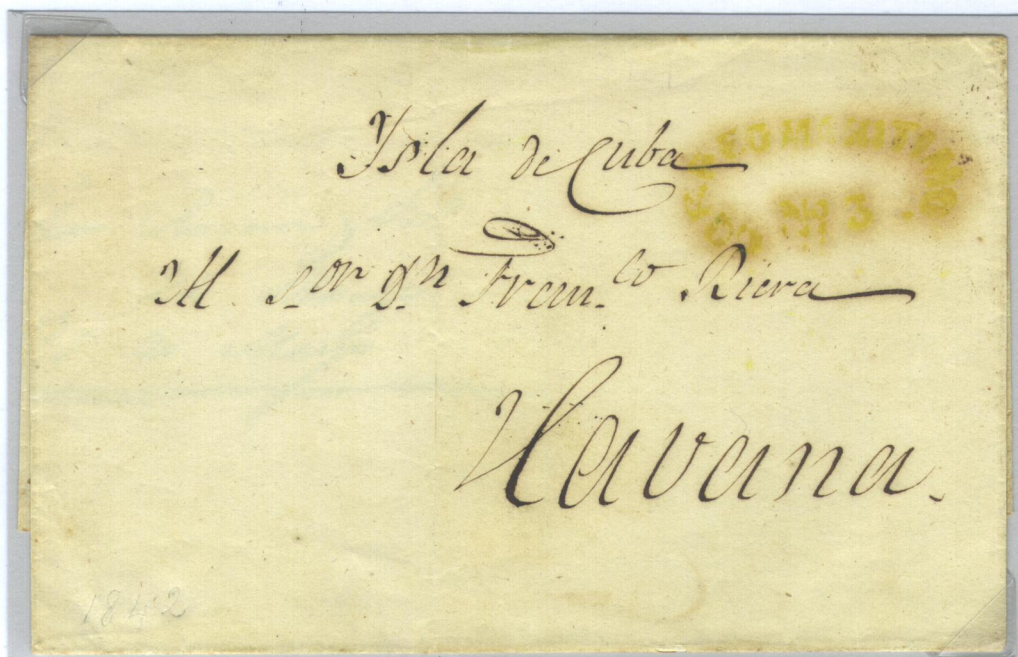
1844. Madrid to Havana via Cadiz.
Unpaid single weight letter. There's
only a handful of covers addressed to
Cuba with CORREO MARITIMO
markings.

EMPRESA
Steamship Markings :

*Transatlantic Mail
between Cuba and Spain*

“CORREO MARITIMO” (3)

1844. Prepaid letter
from Havana to
Madrid. There are
about a dozen
examples of this
marking in green.



1842. Spain to
Havana. Unpaid single
weight letter.

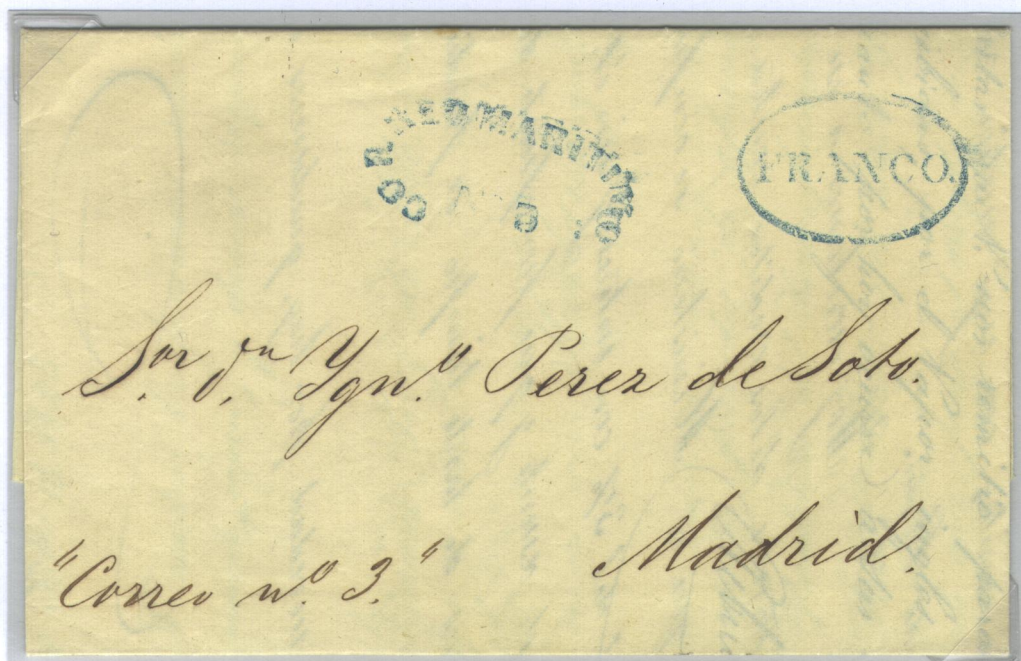
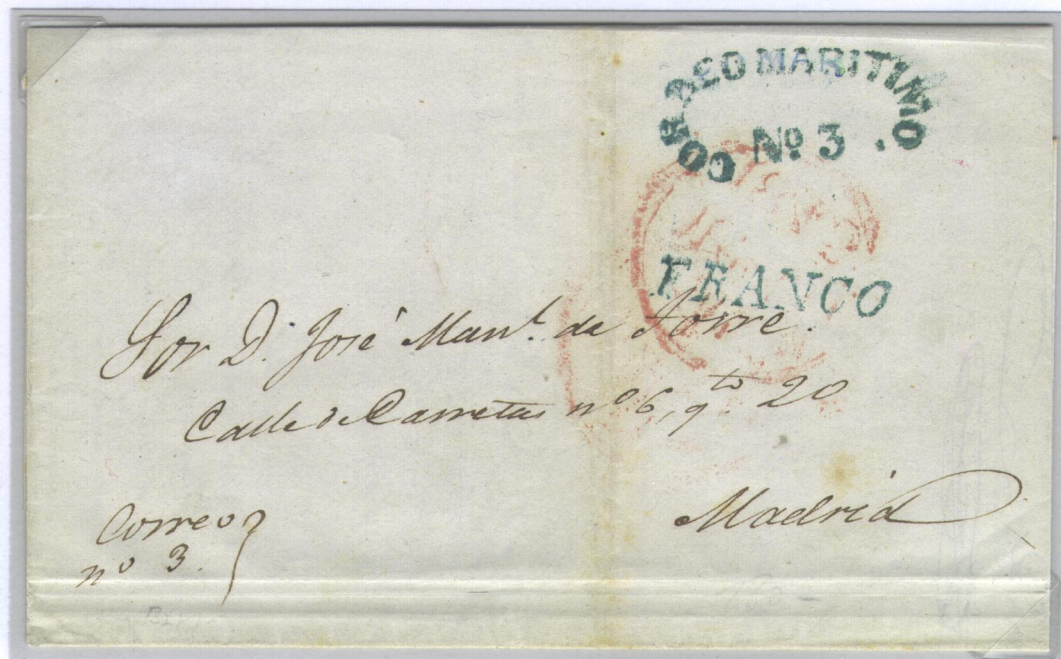
*There are about five
known examples of this
marking in yellow.*

EMPRESA
Steamship Markings :

Transatlantic Mail
Cuba to Spain

"CORREO MARITIMO" (3)

1843. Prepaid letter
from Havana to
Madrid.



1843. Prepaid letter from
Havana to Madrid.