

Sharing our Certificate Archive with the Philatelic Community

[Introduction](#)[Help with PF Search
Home](#)[Contact PF](#)[Return to PF](#)

4 Certificates Selected

[First](#)[Next](#)[Prev](#)[Last](#)[New Search](#)[Modify Search](#)

Sort By

[Certification No](#)[Descending](#)

FILTER: Country=CUB, Catalog No. = 226A, All Certs

Certificate Details

Cert No	478219
Submission Type	Multiple
Symbol	O
Grade	-
Hinged	-
Subsequent Certs	-

Image



Final

Country:Cuba

Cat. No.	Issue	Denom.	Color
226A	1899	10c on 10¢	brown

LEFT IMPRINT VERTICAL PAIR.

AND WE ARE OF THE
OPINION THAT
IT IS GENUINE, PREVIOUSLY
HINGED, THE BOTTOM
STAMP WITH TWO TINY THN
SPOTS; THE SELVEDGE TINY
THINS. *****

[\(Full Size Image\)](#)

Cert No	461752
Submission Type	Stamp
Symbol	O
Grade	-
Hinged	-

Subsequent Certs	Prev No. 43588 Orig No. 43588 Last No. 461752 Show Cert? Y History
---------------------	--------------------------------------------------------------------------------------------------------------------------------------------

[\(Full Size Image\)](#)

Country:Cuba

Cat. No.	Issue	Denom.	Color
226A	1899	10¢ on 10¢	brown

LEFT MARGIN SINGLE.

AND WE ARE OF THE
OPINION THAT
IT IS GENUINE, PREVIOUSLY
HINGED, WITH A SMALL THIN
SPOT AT TOP, AND A RED
"SPECIAL SURCHARGE"
HANDSTAMP ON THE
REVERSE. *****

Cert No	457336
Submission Type	Stamp
Symbol	M
Grade	-
Hinged	NH
Subsequent Certs	-



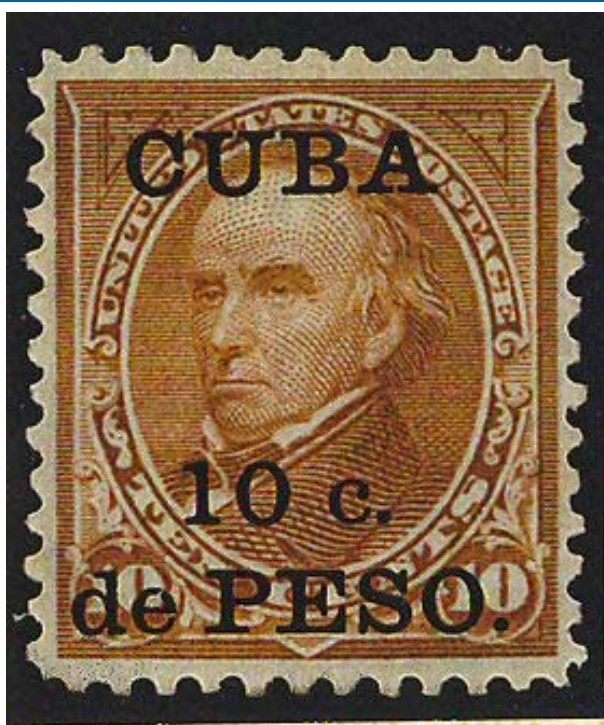
Country:Cuba

Cat. No.	Issue	Denom.	Color
226A	1899	10c on 10¢	brown

AND WE ARE OF THE
OPINION THAT
IT IS GENUINE, NEVER
HINGED, REPERFORATED AT
TOP *****

[\(Full Size Image\)](#)

Cert No	359879
Submission Type	Stamp
Symbol	O
Grade	-
Hinged	-
Subsequent Certs	-



Country:Cuba

Cat. No.	Issue	Denom.	Color
226A	1899	10c o	10¢, brown

AND WE ARE OF THE
OPINION THAT
It Is Genuine, Previously
Hinged*****

[\(Full Size Image\)](#)

Page 1 of 1

4 Certificates Selected

[First](#) [Next](#) [Prev](#) [Last](#) [New Search](#) [Modify Search](#) Sort By [Certification No](#) [Descending](#)

©2010 All philatelic content on this site is property of The Philatelic Foundation all rights reserved
Search Engine powered by [Droege](#) ©2010 Droege Computing Services, Inc. all rights reserved.