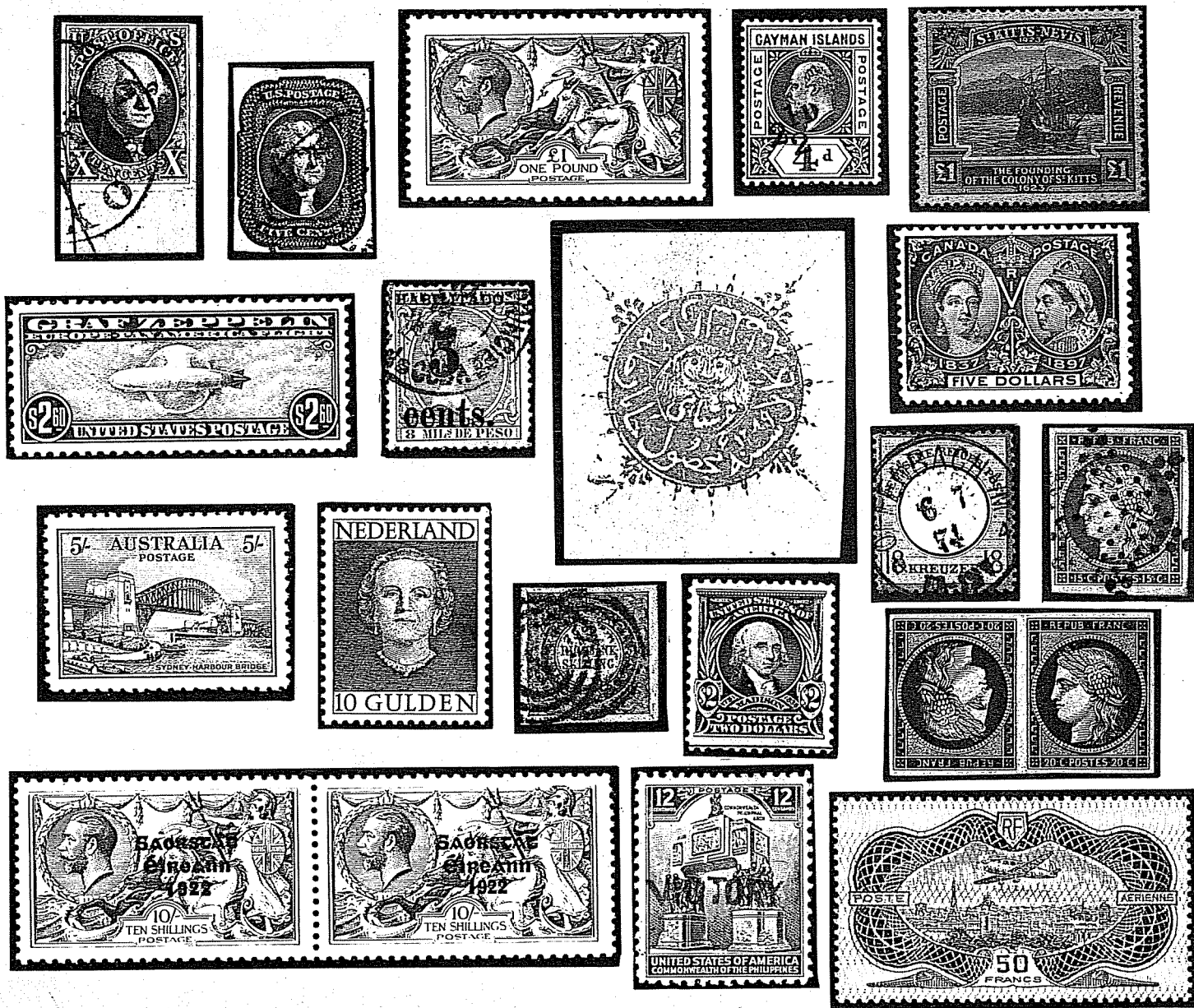


# UNITED STATES, BRITISH EMPIRE FOREIGN POSTAGE STAMPS & POSTAL HISTORY



Monday, Tuesday, Wednesday & Thursday, November 12, 13, 14 & 15, 1979  
Sotheby Parke Bernet Stamp Auction Co., Inc.

# **UNITED STATES, BRITISH EMPIRE, FOREIGN POSTAGE STAMPS & POSTAL HISTORY**

featuring

**Important 19th & 20th century United States  
Postage Stamps and Postal History**

**The Virginia & Henry Hull collection of Confederate States of America**

**An Important Cuban and Puerto Principe collection of  
Postage Stamps and Postal History**

**The Theodore Light Award-winning collection of Afghanistan**

**The Dr. Fritz Rosenberg German Empire Collection of  
Postage Stamps and Postal History**

## **PUBLIC AUCTION**

**980 Madison Avenue, New York**

**FIRST SESSION: MONDAY, NOVEMBER 12, 1979 at 1:30 P.M. (page 1)**

**SECOND SESSION: TUESDAY, NOVEMBER 13, 1979 at 10:45 A.M. (page 53)**

**THIRD SESSION: TUESDAY, NOVEMBER 13, 1979 at 1:30 P.M. (page 81)**

**FOURTH SESSION: WEDNESDAY, NOVEMBER 14, 1979 at 10:45 A.M. (page 135)**

**FIFTH SESSION: WEDNESDAY, NOVEMBER 14, 1979 at 1:30 P.M. (page 165)**

**SIXTH SESSION: WEDNESDAY, NOVEMBER 14, 1979 at 4:00 P.M. (page 191)**

**SEVENTH SESSION: THURSDAY, NOVEMBER 15, 1979 at 10:45 P.M. (page 215)**

**EIGHTH SESSION: THURSDAY, NOVEMBER 15, 1979 at 1:30 P.M. (page 261)**

## **SOTHEBY PARKE BERNET STAMP AUCTION CO., INC.**

**158 Deer Hill Avenue, Danbury, Connecticut 06810**

**Tel. (203) 743-4458/4459**

**Important Notice: Please see revised "Conditions of Sale" opposite.**

The following is a fine collection of these extremely difficult issues and their condition, for the most part, is the finest available. It must be remembered that poor centering and irregular perforations are the rule rather than the exception. Virtually all of the stamps have been expertized, largely by Herbert J. Bloch, the leading authority on these issues. Most of the stamps offered here were once part of the most prominent collections of this area, most specifically Tows and Juhring.

## POSTAGE STAMPS

- 1101 田 **#1, 2, 14, ½rp Blue Green, 1rp Gray Green and 2rp Dull Rose**, 88 copies of the ½rp, 172 of the 1rp and 282 of the 2rp, all with defacing penmark, with many multiples up to a block of 15, margins from cutting to large, some faults, excellent plating material ..... (1,024.50)
- 1102 **Duplicated collection** of 1,275 stamps, mixed mint and used, fairly complete through 1898 issues, a couple of later issues are imperf, some faults, rest FINE-VERY FINE ..... Est. 200-300
- 1103 **#1/316, Stockbook** of about 1,500 stamps, mixed mint and used with much of the later being mint, strong through 1898 King Alfonso XIII, includes the "Y ¼" surcharge on 2p Orange Red mint and used and 1883 20c Red Brown in a mint block of 4, some earlier with pen defacement, faults mostly limited to earlier, later generally FINE-VERY FINE ..... Est. 800-1,000
- 1104 田 **#127, 10c Brown Postal Forgery**, imperforate block of 8 (4 x 2) affixed to small piece of a court document used in the forger's trial, block with two strikes of official h.s. in violet, portion of imprinted revenue stamp appears, interesting ..... Est. 40-50
- 1105 P **#230P1, 5c Blue**, large die proof, light trace of foxing on reverse, VERY FINE ..... 80.00
- 1106 ★ **#340-54, C24-29, E10-11, American Writers and Artists**, complete, each "Muestra" (Specimen) overprint, all with o.g., one of the 8c, the 25c and one of the 5c air mails with a small thin spot, balance FINE-VERY FINE ..... Est. 50-75
- 1107 ★田 **#648-62, 1c-10c Christmas**, the set of 3 sheets of 25 stamps each, never hinged, VERY FINE ..... 195.50
- 1108 P **#230P1, 10c Orange**, large die proof, minor foxing, still VERY FINE ..... 200.00

## PUERTO PRINCIPE ISSUE OF 1898-99

### FIRST PRINTING

- 1109 **#176, 1c on 1m Orange Brown**, Type a, the five different positions, Pos. 1, 2 and 3 used, the latter two each tied to piece, Pos. 4 and 5 mint, o.g., a few small faults, FINE appearance, each signed by Bloch or Tows ..... 105.00
- 1110 **#178, 2c on 2m Orange Brown**, Type c, Pos. 1 tied to piece by oval military station cancel, Pos. 3 tied to piece and Pos. 4 mint, o.g., light thinning, others VERY FINE ..... 50.00
- 1111 **#178a, 2c on 2m Orange Brown, Inverted Surcharge, Combination Pair**, Types c and d, Pos. 1 and 2, used, traces of original piece adhering to reverse, FINE and scarce, signed Bloch ..... (Photo) 150.00+
- 1112 **#178a, 179a, 2c on 2m Orange Brown, Inverted Surcharge, Combination Pair**, Types c and d, Pos. 2 and 3, tied to piece by blue c.d.s., faintest trace of edge toning, FINE signed Bloch ..... (Photo) 150.00+
- 1113 **#178a, 2c on 2m Orange Brown, Inverted Surcharge**, Type c, two different positions, Pos. 3 and 4, each tied to piece by c.d.s., FINE, Pos. 4 signed by Bloch 100.00
- 1114 **#178a, 2c on 2m Orange Brown, Inverted Surcharge**, Type c, Pos. 3, tied to piece by full c.d.s., centered slightly into perfs at right, FINE for this, signed Bloch ..... (Photo) 50.00
- 1115 **#178a, 2c on 2m Orange Brown, Inverted Surcharge**, Type c, Pos. 4, tied to piece by c.d.s., centered into perfs at right, FINE for this, signed Bloch ..... 50.00
- 1116 **#179a, 2c on 2m Orange Brown, Inverted Surcharge**, Type d, Pos. 2, tied to piece by c.d.s., FINE, signed Bloch ..... (Photo) 100.00



### FIRST PRINTING

- |  |  |
|--|--|
| <p>1117 ★ #180, 181, 3c on 3m Orange Brown, Surcharge Combination Pair, Types e and f, Pos. 1 and 2, o.g., Pos. 1 lightly thinned, Pos. 2 with corner crease, VERY FINE appearance ..... (Photo) 95.00+</p> <p>1118 #180,181, 3c on 3m Orange Brown, Surcharge Combination Pair, Types e and f, Pos. 1 and 2, tied to piece by nearly complete c.d.s., piece with two small tears, FINE ..... (Photo) 70.00+</p> <p>1119 #180a, 181a, 3c on 3m Orange Brown, Inverted Surcharge, Combination Pair, Types e and f, Pos. 1 and 2, tied to piece by full c.d.s., faint trace of toning, piece with three small tears, still FINE and scarce, signed Bloch ..... (Photo) 335.00+</p> | <p>1120 #180, 3c on 3m Orange Brown, Type e, four different positions, all used, Pos. 1, 3, 4 and 5, the last being tied to piece, Pos. 4 off center, others FINE, three signed 80.00</p> <p>1121 ★ #181, 3c on 3m Orange Brown, Type f, Pos. 2, dulled o.g., FINE, signed Bloch..... 70.00</p> <p>1122 #188a, 5c on 5m Orange Brown, Inverted Surcharge, Type g, Pos. 3, used, well centered for this, tiny hinge thin at top, VERY FINE appearance, signed Bloch and J.M. Bartels .....(Photo) 150.00</p> <p>1123 #189, 5c on 5m Orange Brown, Type h, Pos. 2, tied to piece by central c.d.s., one trivial corner perf tip crease, FINE and scarce, signed Bloch and J.M. Bartels .....(Photo) 225.00</p> |
|--|--|

# CUBA PUERTO PRINCIPE ISSUE OF 1898-1899

## SECOND PRINTING

- 1124 **#182, 183, 5c on 1m Orange Brown, Surcharge Combination Pair**, Types g and h, Pos. 1 and 2, well centered pair for this, tied to piece by full c.d.s., fresh, VERY FINE, rare, signed Bloch ..... (Photo) 500.00+
- 1125 **#182, 5c on 1m Orange Brown**, Type g, Pos. 3, tied to piece, FINE, signed Bloch .....(Photo) 150.00
- 1126 **#183, 5c on 1m Orange Brown**, Type h, Pos. 2, used, small thin spot at top, FINE appearance, signed Bloch .....(Photo) 350.00
- 1127 **#184, 5c on 2m Orange Brown**, Type g, Pos. 4, tied to irregular piece by central c.d.s., corner perf tip crease, still FINE, P.F. CERT. ....(Photo) 200.00
- 1128 **#187, 5c on 3m Orange Brown**, Type h, Pos. 2, very well centered, tied to piece by central c.d.s., VERY FINE, signed Bloch .....(Photo) 400.00
- 1129 **#188, 189, 5c on 5m Orange Brown, Surcharge Combination Pair**, Types g and h, Pos. 1 and 2, tied to small irregular piece, strong offset of surcharge on reverse, pair off center, still scarce (Photo) 270.00+
- 1130 **#189, 5c on 5m Orange Brown**, Type h, Pos. 2, surcharge in dull ink, tied to piece by nearly full c.d.s., FINE, signed Bloch and J.M. Bartels ..(Photo) 225.00
- 1131 **#190, 5c on ½m Blue Green**, Type g, the four different positions, Pos. 1, 3, 4 and 5, the first three used and tied to piece, Pos. 5, mint o.g., with small thin and a toned spot, used FINE, three signed Bloch ..... 395.00
- 1132 **#190, 5c on ½m Blue Green, Gutter Pair**, Type g, Pos. 3 and 4 (gutter), tied to piece by full c.d.s., some mild toning and perfs missing at right on gutter, FINE appearance, signed Bloch ..... (Photo) 130.00+
- 1133 ★ **#190a, 5c on ½m Blue Green, Inverted Surcharge**, Type g, Pos. 3, o.g., hinge remnant, FINE signed Bloch and Miguel Lazaro .....(Photo) 275.00
- 1134 **#190a, 5c on ½m Blue Green, Inverted Surcharge**, Type g, Pos. 5, tied to piece by full c.d.s., EXTREMELY FINE, rarely seen so well centered, signed Bloch .....(Photo) 150.00
- 1135 **#190, 5c on ½m Blue Green, Inverted Surcharge**, Type g, Pos. 1, tied to piece, well centered, VERY FINE, signed Bloch .....(Photo) 150.00
- 1136 **#190a, 5c on ½m Blue Green, Inverted Surcharge**, Type g, Pos. 4, tied to piece, FINE, signed Bloch .....(Photo) 150.00

- 1137 **#190b, 5c on ½m Blue Green, Gutter Strip of 3, One Without Surcharge**, Type g, Pos. 4 and 5, right stamp without surcharge, tied to piece by c.d.s., some perf tip toning, still FINE and rare, signed Bloch, FRIEDL CERT. .... (Photo) 240.00+
- 1138 **#190, 191, 5c on ½m Blue Green, Surcharge Combination Gutter Pair**, Types g (on gutter) and h, Pos. 1 and 2, tied to piece by indistinct c.d.s., some perf tip toning, still FINE and scarce, signed by Bloch (Photo) 110.00+
- 1139 **#190a, 191a, 5c on ½m Blue Green, Inverted Surcharge Combination Gutter Strip of 3**, Types g, h and g (gutter), Pos. 1-3, tied to piece by two strikes of c.d.s., well centered, VERY FINE, a rare and striking piece, signed Bloch, FRIEDL CERT. .... (Photo) 500.00+
- 1140 **#191, 5c on ½m Blue Green**, Type g, Pos. 2, tied to small piece, FINE, signed Bloch and J.M. Burtels 90.00

## THIRD PRINTING

- 1141 ★ **#196, 197, 3c on 1c Black Violet**, Types j and k, the five positions complete (Pos. 2 being #197), all mint except Pos. 2, two with o.g., small faults, FINE appearance, most signed ..... 225.00
- 1142 **#197a, 3c on 1c Black Violet, Inverted Surcharge**, typed, Pos. 2, tied to piece by central c.d.s., faint perf. toning, otherwise VERY FINE, signed Bloch- .....(Photo) 150.00
- 1143 ★ **#198, 199, 5c on 1c Black Violet**, types i and j, the five different positions in a horizontal strip of 5, Pos. 2 being #199, o.g., the largest possible multiple, some perf. separation between third and fourth stamps, FINE ..... - (Photo) 130.00+
- 1144 ★ **#200, 200a, 10c on 1c Black Violet**, Type m, the five positions in a horizontal strip of 5, Pos. 4 being the broken "1" variety, o.g., very fresh, FINE, the largest possible multiple, signed Bloch ..... 120.00+
- 1145 ★ **#200, 200a, 10c on 1c Black Violet**, Type m, the five different positions including Pos. 4, the broken "1" variety, Pos. 1-4 o.g., Pos. 5 tied to piece, Pos. 3 with gum thin, others FINE ..... 140.00

## FOURTH PRINTING

- 1146 **#177, 1c on 1m Orange Brown**, Type b, Pos. 1 and 2, horizontal pair tied to piece, Pos. 2 being the broken "1" variety, piece with tear and slightly creased between stamps causing separation of perfs, still FINE, signed ..... 75.00+
- 1147 **#177, 1c on 1m Orange Brown**, Type b, Pos. 3 and 4, horizontal pair tied to piece, FINE ..... 50.00+





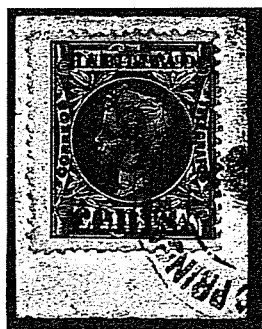
# PUERTO PRINCEPE ISSUE OF 1898-1899

## FOURTH PRINTING

- 1148 **#177b, 1c on 1m Orange Brown, Inverted Surcharge,**  
Type b, Pos. 3, tied to piece by bluish black c.d.s., some  
light toning at bottom, otherwise FINE, signed Bloch  
.....(Photo) 175.00
- 1149 **#175b, 1c on 1m Orange Brown, Inverted Surcharge,**  
Type b, Pos. 5, tied to piece, stamp with rounded corner,  
otherwise FINE, signed Bloch .....(Photo) 175.00
- 1150 **#177d, 1c on 1m Orange Brown, Inverted Surcharge,**  
**Broken "1" Variety,** Type b, Pos. 2, tied to piece by  
bluish black c.d.s., FINE, scarce, signed Bloch ..... -  
.....(Photo) 225.00
- 1151 **#179B, 3c on 1m Orange Brown, Type k, Pos. 1 and 2,**  
horizontal pair tied to piece, centered slightly into perfs at  
right, light vertical crease affecting right stamp, about  
FINE appearance, signed Bloch ..... (Photo) 250.00+
- 1152 **#179B, 3c on 1m Orange Brown, Type k, Pos. 5, very**  
well centered, tied to piece, VERY FINE, signed Bloch  
.....(Photo) 125.00
- 1153 **#179B, 3c on 1m Orange Brown, Type k, Pos. 5, tied to**  
small piece, FINE, signed Bloch and J.M. Bartels  
..... 125.00
- 1154 **#179Bc, 3c on 1m Orange Brown, Double Surcharge,**  
Type k, Pos. 3, tied to small piece, unpriced in Scott,  
believed to be unique, FINE, handstamped Tows on  
reverse, FRIEDL CERT. ....(Photo) Est. 300-400



1155



1156

- 1155 **#179D, 3c on 1m Orange Brown, Type I, Pos. 4, used,**  
wide margins for this, VERY FINE, rare, signed Bloch  
among others .....(Photo) 500.00
- 1156 **#179B, 3c on 1m Orange Brown, Type I, Pos. 4, tied to**  
piece, perfs cutting slightly at right, about FINE, signed  
Bloch .....(Photo) 500.00
- 1157 **#179D, 3c on 1m Orange Brown, Type I, Pos. 4, a**  
faulty used example, still scarce ..... 500.00



- 1158 **#192, 193, 5c on ½m Blue Green, Surcharge Combin-**  
**ation Gutter Strip of 3, Types i and j, Pos. 1-3, two**  
examples of Type i in a horizontal strip of 3, with the  
center being a blank gutter and with surcharge Type j, tied  
to piece by two strikes of c.d.s., VERY FINE and rare,  
signed Bloch, FRIEDL CERT. .... (Photo) 650.00+
- 1159 **#192, 193, 5c on ½m Blue Green, Surcharge Combin-**  
**ation Pair, Types i and j, Pos. 1 and 2, horizontal pair,**  
tied to piece by single c.d.s., some toning, well centered,  
scarce, signed Bloch ..... (Photo) 450.00+
- 1160 **#193, 5c on ½m Blue Green, Type j, Pos. 2, well**  
centered, tied to piece, VERY FINE, signed Bloch  
.....(Photo) 250.00

## FIFTH PRINTING

- 1161 ★ **#201, 3c on 1m Blue Green, Type k, Pos. 1, o.g.**  
centered into perfs, VERY GOOD, signed Bloch and  
J.M. Bartels .....(Photo) 150.00
- 1162 ★ **#201, 3c on 1m Blue Green, Type k, Pos. 5, o.g.,**  
centered to bottom, about FINE, signed Bloch and J.M.  
Bartels .....(Photo) 150.00
- 1163 **#201a, 3c on 1m Blue Green, Inverted Surcharge,**  
Type k, Pos. 1, tied to slightly irregular piece, centered to  
bottom, about FINE, signed Bloch.....(Photo) 200.00
- 1164 **#201b, 3c on 1m Blue Green, "eents," variety, Type k,**  
Pos. 3, used, faint toning, about FINE, signed Bloch  
.....(Photo) 225.00
- 1165 **#202a, 3c on 1m Blue Green, Inverted Surcharge,**  
Type l, Pos. 4, tied to piece, minor toning, otherwise  
VERY FINE, signed J.M. Bartels, FRIEDL CERT.  
.....(Photo) 650.00
- 1166 **#203a, 3c on 2m Blue Green, "eents," variety, Type**  
k, Pos. 3, well margined, tied to piece, two trivial tone  
specks at bottom, otherwise VERY FINE, signed Bloch  
and Miguel Lazaro .....(Photo) 350.00
- 1167 **#204, 3c on 2m Blue Green, Type l, Pos. 4, black**  
c.d.s., centered to bottom right, mild toning, about FINE,  
signed Bloch .....(Photo) 350.00



1148



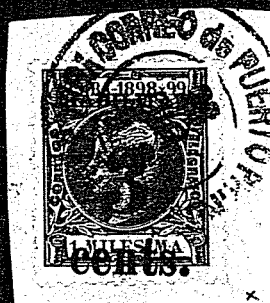
1149



1150



1151



1152



1154



1159



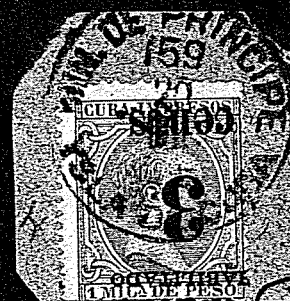
1160



1161



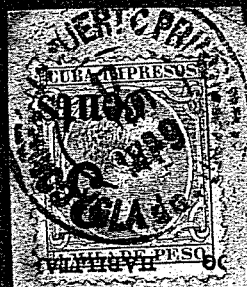
1162



1163



1164



1165



1166



1167



# **PUERTO PRINCIPE ISSUES OF 1893-1899**

## **FIFTH PRINTING**

- 1168 **#204, 3c on 2m Blue Green, Type l, Pos. 4, used, reperforated on one side, FINE appearance**  
.....(Photo) 300.00
- 1169 **#205b, 3c on 3m Blue Green, "cents," variety, Type k, Pos. 3, neat c.d.s., tiny thin spot, FINE appearance, signed Bloch and J.M. Bartels**.....(Photo) 350.00
- 1170 **#205b, 3c on 3m Blue Green, "cents," variety, Type k, Pos.3, light cancel, mild toning, otherwise FINE, scarce, signed Bloch, FRIEDL CERT.** .....(Photo) 350.00
- 1171 **#206, 3c on 3m Blue Green, Type l, Pos. 4, used, minor faults, still scarce, FINE appearance, signed Bloch**  
.....(Photo) 350.00



1172

1173

1176

- 1172 **#211, 5c on 1c Blue Green, Type i, Pos. 2, fresh example tied to small piece, FINE and rare, signed Bloch, among others, FRIEDL CERT.** ..... (Photo) 1,200.00
- 1173 **#212, 5c on 1m Blue Green, Type j, Pos. 4, used, one of the rarest of all Puerto Principe issues, minor staining and tiny thin speck, FINE appearance, signed Bloch, FRIEDL CERT.** ..... (Photo) 1,800.00
- 1174 **#215a, 5c on 5m Blue Green "cents," variety, Type i, Pos. 3, light c.d.s., FINE, signed Bloch, FRIEDL CERT.**  
.....(Photo) 800.00
- 1175 **#217, 5c on 4m Blue Green, Type i, Pos. 2, used centered into perfs at top, small faults, VERY GOOD, P.F. CERT** .....(Photo) 400.00
- 1176 **#217a, 5c on 4m Blue Green, "cents," variety, Type i, Pos. 3, light cancel, FINE, rare, signed Bloch**  
.....(Photo) 1,100.00



1179



1181

- 1177 **#219, 5c on 8m Blue Green, Type i, Pos. 1, used, centered to left and some thinning, about FINE appearance, signed Bloch, FRIEDL CERT.**.....(Photo) 900.00
- 1178 **#219, 5c on 8m Blue Green, Type i, Pos. 2, stamp centered so strongly to bottom that "Habilitado" portion of surcharge appears in space between adjoining stamps, unusual, tied to piece by bluish c.d.s., scarce, signed Bloch, FRIEDL CERT.** .....(Photo) 900.00
- 1179 **#219a, 5c on 8m Blue Green, "cents," variety, Type i, Pos. 3, bluish c.d.s., unusually well centered, small thin spot, VERY FINE appearance, rare, signed Bloch, FRIEDL CERT.** ..... (Photo) 1,800.00
- 1180 **#220, 5c on 8m Blue Green, Type j, Pos. 4, strongly off center to left, tied to piece by nearly full c.d.s., rare, signed Bloch, FRIEDL CERT.** ..... (Photo) 1,800.00
- 1181 **#220, 5c on 8m Blue Green, Type j, Pos. 4, light central c.d.s., centered to bottom and light tropical toning, still rare, signed Bloch, FRIEDL CERT.** (Photo) 1,800.00
- 1182 **Balance of Puerto Principe Surcharges, group of 17 stamps, largely all different numbers or positions, 6 mint, balance used including a few on piece, two inverted surcharges and one broken "1" variety, usual condition**  
..... 640.00

## **GUAM**

- 1183 ★ **#7, 8c Violet Brown, o.g., light crease, EXTREMELY FINE appearance** .....(Photo) 60.00
- 1184 ★ **#9, 10c Brown, TY. II, o.g., reperforated at left, FINE appearance, P.F. CERT.** ..... (Photo) 2,750.00

## **HAWAII**

- 1185 ★ **#R4, \$5.00 Vermilion & Violet Blue, horizontal pair showing full "American Bank Note Company, New York." imprint across top of stamps, o.g., interesting and FINE** ..... (Photo) 24.00+



1168



1169



1170



1171



1174



1175



1177



1178



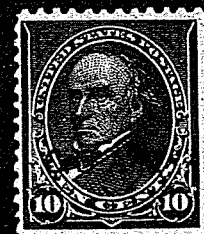
1185



1180



1183



1184