

Pd
15429



EUGENE KLEIN



88th Auction Sale

Collection of

CUBAN STAMPS

Sold by order of

MRS. THOMAS J. WALSH

Widow of the Late Senator From Montana

*and first Attorney General select
of the Franklin D. Roosevelt cabinet,*

Also Consignments of

U. S. and Confederate States

To be held at

200 SOUTH 13TH STREET, PHILADELPHIA, PA.


Opposite St. James Hotel

MARCH 16th, 1934


Friday Afternoon at 1 o'clock

Mr. H. C. Hoover in charge



STAN V. HENKELS, Auctioneer



200 South 13th Street
PHILADELPHIA, PA.



Printed in U. S. A.



EUGENE KLEIN

88th Auction Sale

Collection of

CUBAN STAMPS

Sold by order of

MRS. THOMAS J. WALSH

Widow of the Late Senator From Montana

*and first Attorney General select
of the Franklin D. Roosevelt cabinet,*

Also Consignments of

U. S. and Confederate States

To be held at

200 SOUTH 13TH STREET, PHILADELPHIA, PA.



Opposite St. James Hotel

MARCH 16th, 1934

Friday Afternoon at 1 o'clock

Mr. H. C. Koover in charge

STAN V. HENKELS, Auctioneer



200 South 13th Street

PHILADELPHIA, PA.

INDEX.

| | |
|--|------------|
| United States | 244- 577 |
| Airmail | 668- 682 |
| Incunabula | 244, 245 |
| Postage | 246- 553 |
| Revenues | 554- 570 |
| Wells Fargo | 575 |
| Confederate States | 578- 633 |
| Foreign | 685-1007 |
| Air Post | 634- 667 |
| Crete | 735- 745 |
| Cuba | 1-243, 746 |
| Fiume | 763- 774 |
| France | 775- 785 |
| Great Britain | 792- 802 |
| Greece | 803- 817 |
| Guatemala | 825- 857 |
| Liberia | 871- 875 |
| Niger Coast | 908- 922 |
| Large Lots | 1008-1065 |
| Lots from Steigerwalt Estate | 1066-1144 |

The following lots are illustrated: 99, 106, 107, 109, 110, 114, 120, 121, 122, 123, 124, 125, 126, 130, 134, 135, 136, 137, 138, 139, 141, 142, 143, 144, 148, 150, 153, 154, 157, 161, 162, 163, 164, 165, 166, 168, 169, 170, 171, 172, 173, 175, 176, 177, 178, 179, 180, 181, 182, 183, 184, 185, 186, 187, 188, 189, 190, 191, 192, 193, 194, 195, 196, 210, 211, 213, 640, 667, 871, 872, 874, 907, 910, 911, 912, 916, 918, 919, 920, 921, 922, 946, 982, 984, 990.

The letter "P" precedes the lot numbers which are illustrated.

CATALOGUE

The single stamps are listed according to Scott's 1934 edition; the blocks of four and other specialties according to Scott's U. S. Specialized 1934 edition catalogues.

The catalogue numbers are enclosed in parentheses. ★ means unused. ○ cancelled, ☐ block of four or larger, ☒ on original cover, o. g. stands for original gum which should only be expected when mentioned.

| Lot No. | CUBA. | Catalog No. Value |
|------------|-------|----------------------|
|------------|-------|----------------------|

Spanish Issues.

| | | |
|---|--|---------------|
| 1 | ☐○ 1855, ½rp, 1rp, two fine used blocks of four | (1,2) 2.00 |
| 2 | ○ 1rp, horizontal pair, pin perforated unofficially, single pen stroke, fine | (2 variety) — |

| | | | | |
|----|----|---|-----------------|-------|
| 3 | 田 | 2rp carmine, fine used block of four | (3) | 2.00 |
| 4 | ★ | 2rp orange red, o. g. | (4) | 5.00 |
| 5 | ★ | 2rp orange red, horizontal pair | (4) | 10.00 |
| 6 | 田 | 2rp, fine used block of four | (4) | 3.00 |
| 7 | ○ | 1855-56, ¼rp on 2rp carmine, fine used | (5) | 7.50 |
| 8 | ○ | ¼rp on 2rp orange red, fair used | (6) | 35.00 |
| 9 | ○ | ¼rp on 2rp carmine, fine used | (7) | 6.00 |
| 10 | ○ | ¼rp on 2rp, fine used | (7) | 6.00 |
| 11 | ○ | ¼rp on 2rp, vertical pair, fine used, scarce in a pair | (7) | 12.00 |
| 12 | ☒ | ¼rp on 2rp, on cover, lightly tied, fine and rare on cover | (7) | 6.00 |
| 13 | ○ | ¼rp on 2rp, variety no fraction bar, close at left | (7a) | — |
| 14 | ○ | ¼rp on 2rp orange red, fine used | (8) | 30.00 |
| 15 | ☒ | ¼rp on 2rp orange red, superb stamp, well tied to fine cover, exceedingly rare | (8) | 30.00 |
| 16 | ○ | 1856, ½r strip of three and block of four, 1r pair, 2r pair, nice lot including shades | (9-11) | 4.36 |
| 17 | 田 | 1rp gray green, fine used block of four, with interesting irregular alignment | (10) | 3.40 |
| 18 | ★ | 2rp orange red, o. g. | (11) | 15.00 |
| 19 | ★ | 2rp, dark shade, o. g., gum creases | (11) | 15.00 |
| 20 | ★ | 2rp, o. g. | (11) | 15.00 |
| 21 | ○ | 1857, ½r, upper left plate flaw in a pair, cut into at top, scarce variety | (12 var.) | — |
| 22 | ○ | ½r, six singles, defective upper left corner transfer variety, various stages | (12 var.) | — |
| 23 | ○ | 1r, cancelled "Division Expedicionaria A Mejico, Correo," rare cancellation | (13) | — |
| 24 | 田★ | 1857, ½rp on 2rp, block of four, o. g. | (15) | 16.00 |
| 25 | ○ | ¼rp on 2rp, four singles, varieties of surcharge types | (15) | 12.00 |
| 26 | ○ | ¼rp on 2rp, inverted "1" of "¼", used | (15a) | — |
| 27 | ○ | ¼rp on 2rp, inverted "1" and broken "4", fine used | (15a) | — |
| 28 | ★ | ¼rp on 2rp, Roman "I" in "¼", o. g. | (15 var.) | — |
| 29 | ○ | ¼rp on 2rp, ten singles more or less close, variations of surcharge, good study lot | (15) | 30.00 |
| 30 | 田★ | 1866, ¼rp black, surcharges irregularly spaced, block of four | (22) | 10.00 |
| 31 | 田 | 40c, block of four, fine used | (26) | 16.00 |
| 32 | ○ | 1867, Bisects of 10c and 20c, four positions of each, used on small portions of cover, eight pieces | (28,29 bisects) | — |
| 33 | 田 | 40c, block of four, used on small piece | (30) | 7.00 |
| 34 | ○ | 1868, Bisects of 10c and 20c, used on small portions of cover, eight different | (32a,33a) | — |
| 35 | ☒ | Left vertical half of 20c, used 10c, well tied to face of cover | (33a) | — |
| 36 | ○ | 1869, Bisects of 10c and 20c, used on small portions of cover, eight different | (36a,37 bisect) | — |
| 37 | ☒ | 1868, surcharged, 10c, small blue town cancellation on stamp, repeated on cover, fine and rare | (39a) | — |
| 38 | ☒ | 10c, lightly tied to cover | (39a) | — |

| | | | | |
|----|----|---|---------------------|-------|
| 39 | ★ | 1870, 5c blue, clipped at bottom | (46) | 7.50 |
| 40 | ○ | Bisects of 10c and 20c, used on small portions of cover, eight different | (47a,48a) | — |
| 41 | ○ | Nos. 48a, 55a, 64b and other bisects, eight different used on small portions of cover | (48a etc.) | — |
| 42 | ★ | 40c rose, off center | (49) | 7.00 |
| 43 | ○ | 40c rose, horizontal pair, registration cancellation | (49) | 6.00 |
| 44 | ★ | 1871, 12c, 1p, single imperforates | (50b,53a) | — |
| 45 | ○ | Bisects of 25c, 50c and 1p, used on small portions of cover, nine different | (51b,52c,53) | — |
| 46 | ★ | 50c imperforate horizontal strip of four, o. g. | (52b) | — |
| 47 | ○ | 1873, Bisects of 25c and 50c, used on small portions of cover, eight different | (55a,56) | — |
| 48 | ★ | 50c, imperforate horizontal pair, o. g. | (56a) | — |
| 49 | ★ | 1p red brown, o. g. | (57) | 6.00 |
| 50 | ○ | 1p, horizontal pair, used | (57) | 12.00 |
| 51 | ○ | 1874, Bisects of 25c, 50c violet and 50c gray, used on small pieces of cover, twelve different | (59,60,61a) | — |
| 52 | ☒ | Quarter of 50c gray used on large portion of cover, well tied | (61 bisect) | — |
| 53 | ★ | 1875, 12 ½c, imperforate horizontal strip of three, one thin, o. g. | (63a) | — |
| 54 | ○ | Bisects of 12 ½c, 25c and 50c, used on small pieces of cover, nine different | (63,64b,65b) | — |
| 55 | ○ | 1876, Bisects of 25c and 50c, used on portions of cover, eight different | (68c,69) | — |
| 56 | 田★ | 1877, 10c green, block of four | (71) | 10.00 |
| 57 | ★ | 12 ½c, 50c, an imperforate horizontal pair of each | (72a,74a) | 5.00 |
| 58 | ★ | 25c, imperforate horizontal pair, o. g. | (73a) | — |
| 59 | ○ | Bisects of 25c and 50c, used on portions of cover, eight different | (73,74) | — |
| 60 | 田 | 50c, imperforate block of four, o. g. | (74a) | 4.00 |
| 61 | 田 | 1878, 5c, imperforate block of four, o. g. | (76b) | 6.00 |
| 62 | ★ | 12 ½c, 25c, 50c, 1p, four imperforate horizontal pairs | (78b,79b,80b,81a) | 10.00 |
| 63 | ○ | Bisects of 25c and 50c, used on portions of cover, eight different | (79c,80) | — |
| 64 | ○ | 1879, Bisects of 12 ½c, 25c and 50c, used on portions of cover, nine different | (84,85a,86a) | — |
| 65 | 田★ | 25c, imperforate block of four and pair, shades o. g. | (85 imperf.) | — |
| 66 | ○ | 1880, Bisects of 12 ½c, 25c and 50c, used on portions of cover, nine different | (90,91a,92) | — |
| 67 | ★ | Special Printing on white paper made for the king of Spain, Nos. 95, 99, 103 and 130, o. g. only 100 issued | — | — |
| 68 | ○ | 1883, Bisects of 5c and 10c, used on portions of cover, eight different | (97,98) | — |
| 69 | ○ | 1882, Bisects of 2c, 5c and 10c, used on small portions of cover, fifteen different | (101,103b,104,130a) | — |

| | | | |
|----|----|--|-------|
| 70 | ○★ | 1883, 5c, four different types of inverted surcharge (106c,109a,112a,115a) | — |
| 71 | ★ | 10c, double surcharge, four different (107b etc.) | 8.00 |
| 72 | ○ | 10c double surcharge, six different including combinations, used (107b etc.) | — |
| 73 | ★ | 20c double surcharge, vertical pair, one defective (108 double) | — |
| 74 | 田★ | 20c, double surcharge, block of four, o. g. (108 double) | — |
| 75 | ★ | 10c, inverted surcharge o. g. (110a) | — |
| 76 | ★ | 20c, inverted surcharge, o. g., not listed (111 invert) | — |
| 77 | ★ | 10c and 20c rare type in an unsevered pair, o. g., scarce combination (114a,120) | 18.00 |
| 78 | ★ | 20c, double surcharge, horizontal pair, o. g. (114b) | — |
| 79 | ○ | 20c double surcharge, corner perforation gone (114b) | — |
| 80 | ★ | 20c, inverted surcharge, o. g. not listed (114 invert) | — |
| 81 | ★ | 20c, double surcharge "a" and "d", vertical pair, o. g. (117a) | — |
| 82 | ★ | 20c, double surcharge "d", horizontal pair, o. g. (117a) | — |
| 83 | 田★ | 20c, double surcharge "c" and "d", block of four, o. g. (117a) | — |
| 84 | ★ | 20c, triple surcharge, defective, scarce (120a) | — |
| 85 | ★ | 1891, 5c; 1894, 2c, imperforate pair of each, gum stained (141a,145a) | — |
| 86 | ★ | 1894, 20c, imperforate pair, rare (147a) | — |
| 87 | ★ | 1897, 40c, 80c, pair of each, o. g. (154,155) | 9.00 |
| 88 | ★ | 80c, horizontal pair, o. g. (155) | 5.00 |
| 89 | ★ | 1898, Imperforate, 1m to 2p, set of twenty, some defective and thin (156-175 imperf) | — |

Cuba. U. S. Administration.

PUERTO PRINCIPE, 1898-99.

A magnificent collection of standard rarities, one of the finest offered in years. All stamps have been expertized and are, therefore, guaranteed originals. The position in the strip and the printing are given in addition to the catalogue numbers.

| | | | |
|----|---|---|-------|
| 90 | ★ | Essay. 3c on 1c orange brown, large numeral, prepared by Rodolfo Adam Cotelli, scarce | — |
| 91 | ○ | Black surcharge. 1c on 1m orange brown, horizontal pair, Positions 2 and 3, first printing, used on small piece (176) | 20.00 |
| 92 | ○ | 1c on 1m, pair, Positions 3 and 4, used on small piece (176) | 20.00 |
| 93 | ○ | 1c on 1m, pair, Positions 4 and 5, third printing, used on piece (177) | 10.00 |
| 94 | ○ | 1c on 1m, shifted surcharge "S.—cent", Position 5, used on small piece (177) | 5.00 |
| 95 | ★ | 1c on 1m, pair, one broken figure "1", Positions 2 and 3, o. g. (177,a) | 20.00 |

| | | | |
|-------|---|---|--------|
| 96 | ○ | 1c on 1m, pair, one broken figure "1", Positions 2 and 3, used on piece (177,a) | 15.00 |
| 97 | ○ | 1c on 1m, broken figure "1", Position 2, used on piece (177a) | 10.00 |
| 98 | ○ | 1c on 1m, inverted surcharge, Position 4, used on piece (177b) | 50.00 |
| P 99 | ○ | 1c on 1m, broken figure "1", inverted surcharge, Position 2 used on piece, very rare (177d) | — |
| 100 | ★ | 2c on 2m, strip of three, Positions 3, 4 and 5, first printing, off at bottom, o. g. (178) | 9.00 |
| 101 | ★ | 2c on 2m, strip of five, Positions 1 to 5, complete setting including the thin figure "2", o. g. (178,179) | 19.50 |
| 102 | ○ | 2c on 2m, pair of thick and thin figures "2", Positions 1 and 2, used on piece (178,179) | 7.50 |
| 103 | ○ | 2c on 2m, pair of thick and thin figures "2", Positions 1 and 2, used on piece (178,179) | 7.50 |
| 104 | ○ | 2c on 2m, pair of thick and thin figures "2", Positions 1 and 2, oval "Military Station" cancellation, used on piece (178,179) | 7.50 |
| 105 | ○ | Nos. 178 (Position 1), 180 (Positions 1, 4 and 5) and 198 (Position 4), good lot | 15.50 |
| P 106 | ○ | 2c on 2m, inverted surcharge, pair of thick and thin figures "2", Positions 2 and 1, used on piece (178a, 179a) | 75.00 |
| P 107 | ○ | 2c on 2m, upper left diagonal bisect of No. 178 Position 5, used with 2c on 2m thin figure "2" No. 179 on piece, unlisted (178 bisect,179) | — |
| 108 | ○ | 2c on 2m, strip of five, Positions 1 to 5, complete setting including the thin figure "2", shifted surcharge with portion on marginal strip at left, used on piece (178,179 var.) | 15.00 |
| P 109 | ○ | 2c on 2m, pair of thick and thin figures "2", Positions 1 and 2; Position 1 is printed on blank sheet margin at left, used on piece, very rare (178 var.,179) | — |
| P 110 | ○ | 2c on 2m, pair, Positions 4 and 5, the latter printed on blank sheet margin at right, used on piece, very rare (178 var.) | — |
| 111 | ○ | 3c on 1m, Position 1, third printing, used on piece (179b) | 40.00 |
| 112 | ○ | 3c on 1m, Position 2, line cancellation (179b) | 40.00 |
| 113 | ○ | 3c on 1m, Position 5, off center, used on piece (179b) | 40.00 |
| P 114 | ○ | 3c on 1m, thin figure "3", Position 4, used on piece (179d) | 125.00 |
| 115 | ★ | 3c on 3m, Position 1, first printing, off at bottom (180) | 6.50 |
| 116 | ★ | 3c on 3m, Position 2, thin figure "3", a little off (181) | 15.00 |
| 117 | ○ | 3c on 3m, pair, thick and thin figures "3", Positions 1 and 2, used on piece (180,181) | 13.50 |
| 118 | ○ | 3c on 3m, strip of three, Positions 1, 2 and 3, middle stamp thin figure "3", used on piece (180,181) | 17.00 |

- 119 ○ 3c on 3m, inverted surcharge, Position 5, blue cancellation, used on piece (180a) 30.00
- P 120 ○ 3c on 3m, thin figure "3", inverted surcharge, Position 2, used on piece (181a) 100.00
- P 121 ○ 5c on 1m, pair, thick and thin figures "5", Positions 1 and 2, second printing used on piece (182,183) 90.00

| | | |
|---------|---|---|
| P 122 ○ | 5c on 1m, inverted surcharge, pair, Positions 2 and 1, thick and thin figures 5, used on piece, No. 182a is priced \$250, No. 183a is not priced, one of the outstanding rarities of this country (182a,183a) | — |
|---------|---|---|

- P 123 ○ 5c on 2m, pair, Positions 1 and 2, thick and thin figures 5, used on piece (184,185) 210.00
- P 124 ○ 5c on 3m, pair, Positions 1 and 2, thick and thin figures "5", used on piece (186,187) 140.00
- P 125 ○ 5c on 3m, inverted surcharge, Position 4, off at right, used on piece, very rare (186a) —

| | | |
|---------|---|---|
| P 126 ○ | 5c on 3m, inverted surcharge, thin figure "5", Position 2, used on piece, extremely rare (187a) | — |
|---------|---|---|

- 127 ○ 5c on 5m, Position 4, used on piece (188) 19.00
- 128 ○ 5c on 5m, Position 4, oval "Mil. Sta." cancellation, off at right, used on piece (188) 10.00
- 129 ○ 5c on 5m, Position 2, thin figure "2", perfectly centered, used on piece (189) 50.00
- P 130 ○ 5c on 5m, inverted surcharge, pair, Positions 2 and 1, thin and thick figures "5", used on piece (188a,189a) 140.00
- 131 ○ 5c on ½m blue green, pair, Positions 1 and 2, thick and thin figures "5", used on piece (190,191) 25.00
- 132 ○ 5c on ½m blue green, Position 1, pair, left stamp without surcharge, used on piece (190b) 25.00
- 133 ○ 5c on ½m blue green, Position 5, pair, right stamp without surcharge, used on piece (190b) 25.00
- P 134 ○ 5c on ½m blue green, pair, Positions 3 and 4, the latter surcharge printed on blank paper margin, used on piece, rare and interesting variety (190 var.) —
- P 135 ○ 5c on ½m blue green, strip of three, Positions 3, 4 and 5, middle surcharge on blank paper margin between panes, used on piece, very rare (190 var.) —
- P 136 ○ 5c on ½m blue green, strip of three, the left stamp is Position 4, in the middle is blank paper margin between panes surcharged Position 5, at right is partly severed, unsurcharged Newspaper stamp No. 625, used on piece, very rare and interesting (190 var.) —
- P 137 ○ 5c on ½m blue green, strip of three, stamp at right is Position 3, adjoining at left is blank sheet margin on which are printed Positions 1 and 2, used on piece, unusual variety (190 var.) —

- P 138 ○ 5c on ½m, pair, Position 1 surcharged on blank paper between panes at left, right stamp is Position 2, thin figure "5", used on piece, fine and rare variety (191 var.) —
- P 139 ○ 5c on ½m blue green, inverted surcharge, pair, Positions 2 and 1, thin and thick figures "5", used on piece, close at top, No. 190a is priced \$30, No. 191a is not priced (190a,191a) —
- 140 ○ 5c on ½m blue green, Position 5, used on piece (192) 20.00
- P 141 ○ 5c on ½m blue green, pair thick and thin figures "5", Positions 1 and 2, used on piece, rare (192,193) 70.00
- P 142 ○ 5c on ½m blue green, pair, Position 1 at left, Position 2, thin figure "5" on blank paper between panes, fine variety (193 var.) —
- P 143 ○ 5c on ½m blue green, strip of three, left stamp Position 1, right stamp Position 3, in middle is Position 2 thin figure "5" printed on blank paper between panes, used on piece, very rare (193 var.) —
- P 144 ○ 5c on ½m blue green, strip of three, left stamp Position 2 thin figure "5", right stamp position 4, in middle is position 3 surcharged on blank paper between panes, used on piece, rare variety, Nos. 192 and 193 priced \$70 (193, 192 var.) —
- 145 ★ Red surcharge. 3c on 1c black violet, fourth printing, Position 1, gum stained, scarce (196) 10.00
- 146 ○ 3c on 1c black violet, pair, Positions 2 and 3, thin and thick figures "3", used on piece (196,197) 25.00
- 147 ○ 3c on 1c black violet, inverted surcharge, Position 4, used on piece (196a) 40.00
- P 148 ○ 3c on 1c black violet, thin figure "3", inverted surcharge Position 2, very rare (197a) —
- 149 ★ 5c on 1c black violet, strip of five, Positions 1 to 5, complete setting including thick and thin figures "5", third stamp thin on back, perforations cut design at right, o. g. (198,199) 20.00
- P 150 ○ 5c on 1c, pair Position 4 and 5, the latter printed on blank paper between panes, used on piece, "Blank Paper" varieties in the red surcharge issue are the rarest (198 var.) —
- 151 ○ 5c on 1c, pair, Positions 1 and 2, thick and thin figures 5, used on piece (198,199) 9.00
- 152 ○ 5c on 1c, pair Positions 1 and 2, thick and thin figures 5, oval "Mil. Sta." cancellation, used on piece (198,199) 9.00
- P 153 ○ 5c on 1c black violet, vertical surcharge reading down, Position 1 off at right, but clear of design, used on piece, one of the rarest errors (198b) —
- P 154 ○ 5c on 1c black violet, double inverted surcharge, not listed, Position 1, perforations touch frame line at right, used on piece (198ac) —

- 155 ○ 5c on 1c black violet, thin figure "5", Position 2, off at right, used on piece (199) 6.50
- 156 ○ 5c on 1c black violet, inverted surcharge, thin figure "5", Position 2, off at right, used on piece (199a) 50.00

P 157 ○ 5c on 1c black violet, vertical surcharge reading up, thin figure "5", Position 2, used on piece, one of the rarest errors (199b) —

- 158 ★ 10c on 1c black violet, strip of five, Positions 1 to 5, including broken figure "1", o. g. (200,a) 38.50
- 159 ○ 10c on 1c black violet, pair, one broken figure "1", Positions 4 and 5, perforations cut design at right, used on piece (200,a) 18.50
- 160 ★ Black surcharge. 3c on 1m blue green, fifth printing, Position 1, o. g., gum stained (201) 50.00
- P 161 ★ 3c on 1m blue green, "EENTS", Position 3, perforations cut into design at top, o. g. but gum stained, used price \$75, rare unused (201b) —
- P 162 ○ 3c on 1m blue green, pair, one "EENTS" error, Positions 2 and 3, perforations cut design at bottom, used on piece (201,b) 105.00
- P 163 ○ 3c on 1m blue green, inverted surcharge, Position 2 in a pair with Position 3 "EENTS" inverted surcharged on blank sheet margin, extremely rare error variety, No. 201a is priced \$75 (201c var.) —

P 164 ○ 3c on 1m blue green, Position 2, "EENTS", inverted surcharge, used on piece, very rare (201c) —

- P 165 ○ 3c on 1m blue green, pair, left stamp, Position 4 thin figure "3", at right blank paper between panes surcharged Position 5, used on piece, rare variety, No. 202 is priced \$100 (201 var.) —
- P 166 ○ 3c on 1m blue green, thin figure "3", inverted surcharge, Position 4, used on piece, a real rarity (202a) —
- 167 ○ 3c on 2m blue green, Position 5, a few perforations short at bottom (203) 50.00
- P 168 ○ 3c on 2m blue green, "EENTS", Position 3, used on piece (203a) 100.00
- P 169 ○ 3c on 2m blue green, inverted surcharge, Position 1, used on piece, exceedingly rare (203b) —

P 170 ○ 3c on 2m blue green, "EENTS", inverted surcharge, Position 3, one of the outstanding rarities (203c) —

- P 171 ○ 3c on 2m blue green, thin figure "3", Position 4, used on piece (204) 125.00

P 172 ○ 3c on 2m blue green, thin figure "3", inverted surcharge, Position 4, used on piece, extremely rare (204a) —

P 173 ★ 3c on 3m blue green, strip of five, Positions 1 to 5, complete setting including thick and thin figures "3" and "EENTS", o. g. A showy item of the greatest rarity, priced as regular varieties \$1125 (205,205b, 206) —

- 174 ○ 3c on 3m blue green, Position 2, used on piece (205) 40.00
- P 175 ○ 3c on 3m blue green, inverted surcharge, Position 5, used on piece (205a) 90.00
- P 176 ○ 3c on 3m blue green, "EENTS", Position 3, perforations cut design at top and at right, used on piece (205b) 75.00

P 177 ○ 3c on 3m blue green, "EENTS" error, but inverted surcharge, Position 3, not listed, should be No. 205c, used on piece —

- P 178 ○ 3c on 3m blue green, thin figure "3", Position 4, perforations touch frame line at top, used on piece (206) 85.00
- P 179 ○ 3c on 3m blue green, thin figure "3", inverted surcharge, Position 4, used on piece (206a) 250.00
- P 180 ○ 5c on 1m blue green, Position 5, used on piece (211) 325.00

P 181 ○ 5c on 1m, thin figure "5", Position 4, used on piece (212) 500.00

- P 182 ○ 5c on 3m blue green, Position 1, perforations touch frame line at top, used on piece (215) 75.00
- P 183 ○ 5c on 3m blue green, thin figure "5", Position 4, used on piece (216) 300.00
- P 184 ○ 5c on 4m blue green, Position 2, perforations cut into design at top, used on piece (217) 125.00
- P 185 ○ 5c on 4m blue green, "EENTS" error, Position 3, somewhat yellowed with age, used on piece (217a) 300.00
- P 186 ○ 5c on 4m blue green, inverted surcharge, Position 1, used on piece (217b) 350.00

P 187 ○ 5c on 4m blue green, "EENTS" error, but inverted surcharge, Position 3, used on piece, one of the rarest errors (217c) —

- P 188 ○ 5c on 4m blue green, thin figure "5", Position 4, used on piece, a real rarity (218) —

P 189 ○ 5c on 4m blue green, thin figure "5", inverted surcharge, Position 4, used on piece, very rare error (218a) —

P 190 ○ 5c on 8m blue green, Position 2, perforations touch frame line at left, used on piece (219) 100.00

P 191 ○ 5c on 8m blue green, inverted surcharge, Position 2, used on piece (219a) 250.00

P 192 ○ 5c on 8m blue green, inverted surcharge, Position 2, used on piece, a duplicate of the previous lot, but a little better centered (219a) 250.00

P 193 ○ 5c on 8m blue green, "EENTS" error, Position 3, extremely rare, used on piece (219b) —

P 194 ○ 5c on 8m blue green, "EENTS" error, but inverted surcharge, Position 3, used on piece, one of the rarest of errors (219c)

P 195 ○ 5c on 8m blue green, thin figure "5", Position 3, a little gum stained, used on piece (220) 525.00

P 196 ○ 5c on 8m blue green, thin figure "5", inverted surcharge, Position 3, used on piece (220a) 750.00

197 ○ U. S. used in Cuba during occupation, 1898 to 1900, 15 stamps, 2 cut square envelopes —

198 田 Surcharged on U. S. 1899, 2c on 2c, "CUPA" error in a used block of four, off center, rare (222b) —

199 ○ 2c on 2c carmine, inverted surcharge, very rare, possibly unique (222c) —

200 田★ 3c, period between "B" and "A" in a strip of three, 5c "CUPA" error in a block of four (224a, 225a) 6.50

201 ○ Misplaced surcharges, 1c, 5c, 10c, interesting lot (221 etc.) —

202 ○ 10c brown, shifted surcharge, "CUBA" omitted, scarce, unlisted variety (226 var.) —

203 ○ 1c, 2c (4), 3c, 5c (2), broken letters etc. (221 etc.) —

CUBA REPUBLIC.

204 ★ 1902, 1c on 3c purple, inverted surcharge, o. g. a little off, fine (232a) —

205 田★ 1c on 3c, inverted surcharge, block of four, off at bottom, o. g. (232a) —

206 ★ 1c on 3c, vertical pair, lower stamp without surcharge, o. g. fine (232d) —

207 ★ 1c on 3c, vertical pair, upper stamp without surcharge, o. g. fine (232d) —

208 田★ 1910, 1c green and violet, inverted center, block of four, o. g. fine (239a) 30.00

209 ★ 1c, misplaced picture, vertical pair, interesting variety, o. g. (239 var.) —

P 210 ★ 2c carmine and green, inverted center, horizontal pair, o. g. fine (240a) 250.00

Bids will also be accepted for a single 2c inverted center.

P 211 ★ 10c brown and blue, inverted center, horizontal pair, one a trifle thin, o. g. fine (244a) 350.00

Bids will also be accepted for a single 10c inverted center.

212 ★ Special Delivery. 1899, 10c blue, no period after "Cuba", in a plate No. strip of three, o. g. (551a) 11.00

P 213 田★ 1910, 10c orange and blue, inverted center, block of four, o. g. fine (554a) 500.00

Bids will also be accepted for a single 10c Special Delivery inverted center.

214 田★ Newspaper. 1894, ½m rose, imperforate block of four, o. g. fine (619a) 10.00

215 田 Official stamps of Spain used in Cuba. 1858 to 1868, ½ oz. to 1 lb., five different used on portions of cover, fine specialist lot (855-858) —

Balance of Cuban Collection.

The following lots include the balance of the collection, including both unused and used stamps, mostly on original blank pages. The stamps are in good condition, though some are gum stained and several aged looking on account of having been collected in the tropics. Almost all the lots include shades, cancellations and other varieties dear to the heart of the specialist.

216 ★○ 1855, 25 stamps (1-4) 13.50

217 ★○ 1856, 23 stamps (9-11) 15.06

218 ★○ 1857, 102 stamps, including blocks (12-14) 12.05

219 ★○ 1862-66, 58 stamps including blocks (16-26) 26.87

220 ★○ 1867-68, 37 stamps including blocks (27-34) 19.35

221 ★○ 1869, 30 stamps including blocks (36-38) 11.00

222 ★○ 1870-1873, 111 stamps including blocks (47-56) 19.90

223 ★○ 1874-1876, 101 stamps including blocks (58-70) 17.33

224 ★○ 1877, 30 stamps including blocks (71-75) 22.67

225 ★○ 1878-1880, 109 stamps including blocks (86-93) 17.78

226 ★○ 1881-1882, 69 stamps including blocks (94-105) 15.76

227 ★○ 1883, 252 surcharged stamps including many varieties, also blocks and partly severed sheet (106-120) 32.49

228 田★ 5c. double surcharge, entire sheet of 100, including other varieties, partly severed, o. g. (106b etc.) 150.00

- 229 ★○ 5c, inverted surcharges and other varieties, 17 stamps (106b etc.) 25.50
- 230 ★○ 1883-1891, 100 stamps including blocks also set of Newspaper stamps (121-140,601-606) 26.51
- 231 ★○ 1890-1892, 119 stamps including Newspapers, many blocks (132-143,607-618) 19.13
- 232 ★○ 1894-1897, 89 stamps including Newspapers, several blocks (144-155,619-630) 16.22
- 233 ★○ 1898, 103 stamps including blocks (156-175) 16.54
- 234 ★ 1899, Issued Under United States Administration, 1c on 1c to 10c on 10c type I, also Postage Due and Special Delivery stamps, 28 stamps, o. g. (221-226,501-504,551) 22.70
- 235 ★○ 1c on 1c to 224, 25 strips of three with plate number and inscriptions, 2c on 2c and 2½c on 2c in two shades, mostly unused, 105 stamps (221,222,a,223,a,224) 43.31
- 236 ○ 1c on 1c to 10c on 10c, also Postage Dues and Special Delivery, all used, several stamps showing varieties in surcharges such as broken letters and misplaced surcharges, 144 stamps including blocks (221-226,501-504,551) 41.62
- 237 ★○ Issues of Republic. 1899-1913, 270 stamps including blocks also entire sheet of No. 232 partly severed and page consisting of varieties of surcharge of that stamp (227-252, 552-554) 42.11
- 238 ★○ 1910-1917, 84 stamps including several blocks and surcharges not listed by Scott (239-273,505-507,701) 27.23
- 239 ★○ Cut Square Envelopes. 1899, listed according to Bartels' "Envelopes of the United States" 1933 edition, 44 pieces (C1-C20) 18.38
- 240 ★○ Telegraphs. 1868-1911, 201 stamps which according to Yvert 1933 catalogue list F. 3951.25, lot includes twelve color trials
- 241 ★ Proofs and Double Prints of Postage and Telegraph, mostly early Spanish issues, 77 stamps, the majority in blocks
- 242 ★○ Revolutionary Issues, not listed, thirteen stamps and sixteen seals, also thirteen official seals
- 243 ★○ Reference Lot including incorrect surcharges and bogus issues, 225 pieces, invaluable for the student

UNITED STATES.

Desirable Philadelphia Items.

- 244 "Stamp Collectors Manual" 1862, compiled by A. C. KLINE, first edition, 48 pages of text, fine letterpress, lists 1500 varieties of stamps, refers to Confederate States as "So-called Southern Confederacy," very rare
- 245 "Map of Pennsylvania, Mitchell's" 1830, fine early colored map, useful for collectors of Pennsylvania postmarks, rare

Early Covers.

- 246 ☒ Stampless. Woodstock Hills, E. Florida in a blue fancy circle on small envelope, date in manuscript, unusual
- 247 ☒ Pennsylvania towns, A to L, 1829 to 1850, 23 different, fine lot, several rare
- 248 ☒ "WAY 6 CENTS" unframed in blue on small face of cover, good looking
- 249 ☒ Virginia towns, 16 different covers including unusual towns, Bethany, Kanawha, Liberty etc., nice lot
- 250 ☒ Stamped Covers. Pennsylvania towns, 1857 to 1887, 100 different, nice lot
- 251 ☒ 100 different Pennsylvania towns, different from previous lot, 1861 to 1886, good
- 252 ☒ Hotel covers. 1861 to 1890, 70 different, very good
- 253 ☒ U. S. 25 different, 1872 to 1883, selected for cancellations
- 254 ☒ U. S., 1877 to 1882, 25 different, good cancellations

1847 Post Office.

- 255 ○ 5c red brown, fine early impression, good margins, blue grid, very fine (28) 8.00
- 256 ○ 5c red brown, blue numeral "5" cancellation, very fine (28) 35.00
- 257 ○ 5c red brown, double transfer of top and bottom frame lines, good margins, blue town (28) 35.00
- 258 ☒ 5c red brown, close at top, tied by black grid to cover, red "Boston 5 cts" postmark, fine (28) 17.50
- 259 ☒ 5c red brown, black grid lightly ties to cover, red "PAID" and red "Boston 5 cts." postmarks (28) 17.50
- 260 ☒ 5c red brown, tied by red grids to cover, late impression (28) 12.50
- 261 ☒ 5c red brown, red grid ties to cover, fine (28) 12.50
- 262 ☒ 5c red brown, tied by blue Philadelphia town to cover, fine (28) 12.50
- 263 ☒ 5c red brown, two lovely singles tied by New York square grids in red to cover, on which is an uncanceled New York Carrier No. 1854, small beautiful cover (28,1854) 45.00
- 264 ○ 10c black, good margins at top and sides, cut into bottom, red grid and penstrokes, good looking (29) 20.00
- 265 ☒ 10c black, two fresh singles, more or less close, tied by red square grid to small cover, good looking (29) 80.00
- 266 ★ Reprints. 5c red brown, very fine (29d) 8.00
- 267 ★ 10c black, light crease, good margins (29e) 10.00
- 268 ★ 10c black, very fine (29e) 10.00

1851. Imperforate.

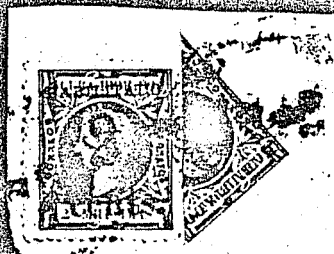
- 269 ☒ 1c blue, type II, lightly tied to small cover, fine (31) 7.00
- 270 ☒ 1c bright blue, close at right, red grid ties to cover, black Hardingsburg, Kentucky postmark, fine (31) 12.00
- 271 ○ 1c blue, type IV, four margins, particularly fine copy (32d) 4.00
- 272 ○ 1c blue, type IV, double transfer, fine (32d) 6.00
- 273 ☒ 1c bright blue, type IV, early shade of Plate II, sheet margin at left, well tied to fine cover (32d) 5.00



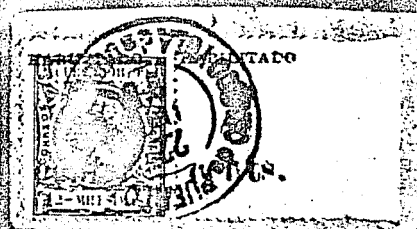
108



109



109



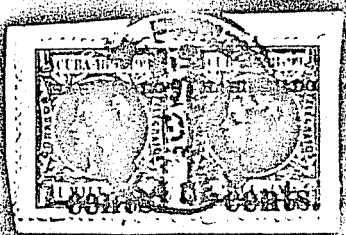
110



111



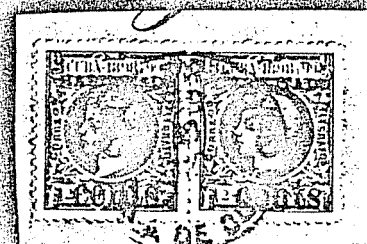
120



121



122



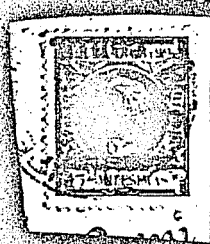
123



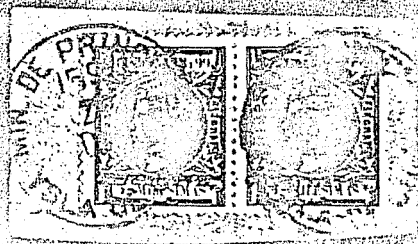
124



125



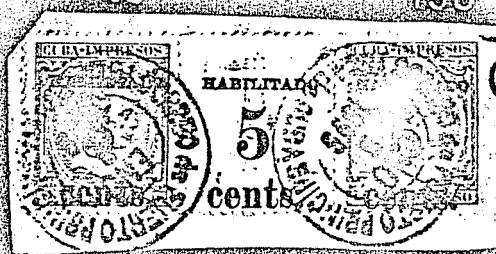
126



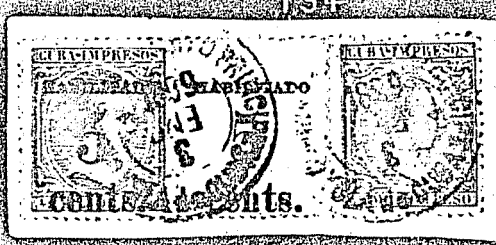
130



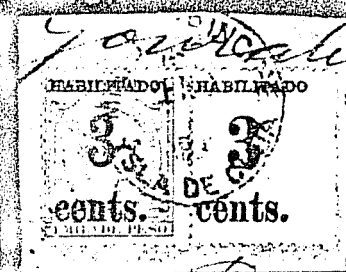
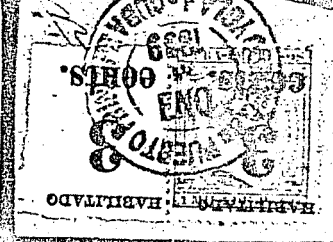
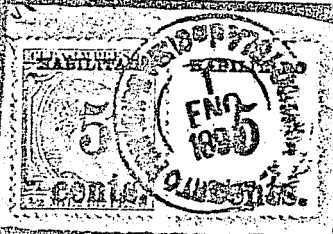
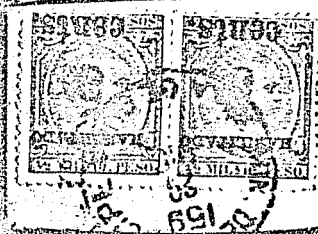
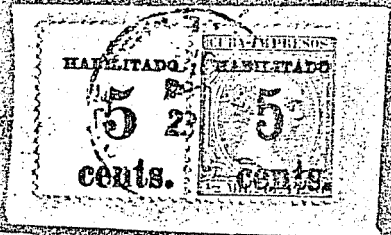
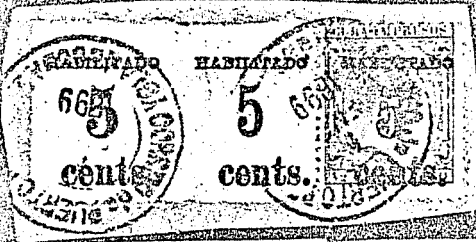
134



135



136





169



170



172



173



176



177



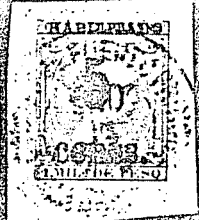
178



179



180



181



182



183



184



185



186



187



188



189



190



191



192



193



194



145



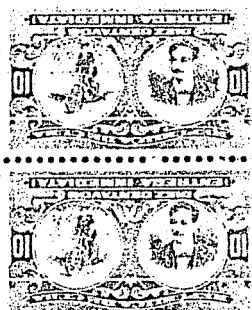
146



216



5410



567

213



571

572

574



910

911

912

913

