

<JUHR7810> = <SGMG7810>



**Ergebnisliste
der**

**14. Auktion
vom 25. bis 28. Oktober 1978**



Howard O. Fraser
Briefmarkenauktionen der
Stanley Gibbons Merkur GmbH



14. Auktion

vom 25. Oktober - 28. Oktober 1978

Versteigerer: H. Pröschold, A. I. E. P.

in unseren Geschäftsräumen
Zeil 83, D-6000 Frankfurt/Main

Telefon 06 11/28 74 77 — Telex 4189 148

BESICHTIGUNG der Auktionslose in unseren Geschäftsräumen

Mo.-Fr. 10—17 Uhr

Zeil 83, D-6000 Frankfurt/Main

Selected Lots of USA will be available for viewing in New York
25th to 27th September 1978 on our premises

Versteigerungsfolge

1. Tag, Mittwoch, 25. Oktober 1978

U. S. A.

nachmittags ab 14.30 Uhr

Los 1 — 968

2. Tag, Donnerstag, 26. Oktober 1978

Übersee — Flugpost — Zeppelinpost

vormittags ab 10 Uhr

Los 969 — 1731

Europa: Albanien — Rußland

nachmittags ab 14.30 Uhr

Los 1732 — 2867

3. Tag, Freitag, 27. Oktober 1978

Schweden — Vatikanstaat

vormittags ab 10 Uhr

Los 2868 — 3490

Altdeutschland, Dt. Reich und Gebiete

nachmittags ab 14.30 Uhr

Los 3491 — 4342

4. Tag, Samstag, 28. Oktober 1978

Sammlungen

vormittags ab 10 Uhr

Los 4343 — 4550

Landkarten

Los 4551 — 4781

Spielkarten

Los 4782 — 4899

Bitte kommen Sie pünktlich, denn wir möchten pünktlich anfangen!

Foreign Exchange

NEW YORK (AP)—Foreign Exchange,
New York prices.

	Fgn. currency in dollars		Dollar in fgn. currency	
	Wed.	Tue.	Wed.	Tue.
Argentina	.0012	.0012	914.50	914.50
Australia	1.1385	1.1370	.8783	.8795
Austria	.0710	.0710	14.09	14.08
Belgium	.0330	.0329	30.34	30.36
Bolivia	.0495	.0495	20.20	20.20
Brazil	.0510	.0510	19.59	19.59
Britain	1.9472	1.9435	.5135	.5145
30 day fut	1.9422	1.9385	.5148	.5158
60 day fut	1.9392	1.9355	.5156	.5166
90 day fut	1.9352	1.9312	.5167	.5178
Canada	.8523	.8523	1.1732	1.1732
30 day fut	.8525	.8528	1.1730	1.1726
60 day fut	.8530	.8530	1.1723	1.1723
90 day fut	.8535	.8538	1.1716	1.1712
Chile	.0301	.0301	33.22	33.22
Colombia	.0248	.0248	40.34	40.34
Denmark	.1874	.1874	5.3355	5.3360
yEgypt	2.54	2.54	.3935	.3935
yEcuador	.0371	.0371	26.95	26.95
France	.2270	.2266	4.4050	4.4120
Greece	.0273	.0273	36.60	36.60
Holland	.4792	.4786	2.0845	2.0880
Hong Kong	.2068	.2069	4.8350	4.8325
India	.1210	.1210	8.2644	8.2644
Indonesia	.0016	.0016	623.00	623.00
Iran	.01420	.01420	70.45	70.45
Israel	.0531	.0531	18.82	18.82
Italy	.001176	.001175	850.50	850.90
Japan	.005149	.005141	194.20	194.50
30 day fut	.005190	.005188	192.65	192.75

Fgn. currency Dollar in
in Dollar Fgn. currency

60 day fut	.005232	.005230	191.10	191.20
90 day fut	.005271	.005268	189.70	189.80
Jordan	3.3534	3.3534	.2982	.2982
Kuwait	3.6436	3.6456	.2744	.2743
Lebanon	.3294	.3294	3.0390	3.0390
Mexico	.0438	.0438	22.80	22.80
New Zealand	1.0455	1.0455	9564	9564
Norway	.1943	.1946	5.1460	5.1375
yPeru	.0054	.0054	186.46	186.46
Philippines	.3358	.3358	7.3585	7.3585
Portugal	.0214	.0213	46.80	46.90
Saudi Arab	.2971	.2971	3.3650	3.3650
Singapore	.4489	.4484	2.2275	2.2300
So. Africa	1.1500	1.1510	.8696	.8688
Spain	.0140	.0139	71.56	71.65
Sweden	.2265	.2267	4.4140	4.4112
Switzerland	.5798	.5783	1.7245	1.7290
30 day fut	.5857	.5832	1.7072	1.7146
60 day fut	.5867	.5887	1.7043	1.6986
90 day fut	.5973	.5947	1.6742	1.6815
Uruguay	.0148	.0148	6.7300	6.7300
Venezuela	.2329	.2329	4.2937	4.2937
W. Germany	.5199	.5194	1.9232	1.9250
30 day fut	.5218	.5230	1.9163	1.9120
60 day fut	.5251	.5302	1.9042	1.8860
90 day fut	.5290	.5398	1.8902	1.8522
Midday prices at New York & San Francisco banks, gathered by Bank of America, New York.				
x—Floating.				
y—Official rate				

11/21/78
11/22/78

Los-Nr.	Scott No.	Ausruf DM
[P] 601 10 C., vertical pair centered to top, some perfs nibbed, tied by cork cancel and „YOKOHAMA MAR 14 JAPAN“ and red „NEW YORK PAID 6 APR 25“ to cover to Paris, matching red „PD“ in circle, London Paid, French transit and arrival backstamped „VERSAILLES 8 MAI 71“, cover reduced at top, fine appearance and very scarce	116 ☒	2000,-
[P] 602 10 C., horizontal strip of three, some faults, tied by cork cancel to blue cover to Liverpool, m/s. „Overland via New York“, matching „YOKOHAMA AUG 22 JAPAN“ and red „NEW YORK SEP 21“, arrival backstamp „LIVERPOOL OC 4 71“, cover faulty, scarce and good appearance	116 ☒	1500,-

CANAL ZONE

[P] 603 1904/39, the collection mint/used with varieties, blocks etc., careful inspection recommended		1000,-
---	--	--------

CUBA

[P] 604 2 Covers from Cuba 1874 or 1875 resp. to Barcelona, franked with combinations of Cuban and US stamps, various pmks. and crayon marks, stamps and covers faulty, but very rare, ex Tows collection	☒	3500,-
---	---	--------

PUERTO PRINCIPE ISSUE 1898/99

All lots are listed in order of printing and catalogued according to the Scott Catalogue (1979 edition).

Unless otherwise stated, all stamps and covers are signed by Herbert J. Bloch of New York — the leading authority on these issues.

We furthermore state that this collection of Puerto Principe represents for the most part the finest available quality and, unless otherwise mentioned, all stamps and covers are subject to multiple expertization marks and some occasional negligible paper or perforation imperfections as are inherent in the issue.

First Printing**Black Surcharge 17½ mm high**

605 1 c. on 1 M., type „a“, three singles, positions 1, 2, 3 cancelled in black or in blue, two on piece, pos. 1, 2 ex Tows collection	176 ☉/△	100,-
606 1 c. on 1 M., type „a“, two singles positions 2 and 5, o. g.	176 *	75,-
[P] 607 2 c. on 2 M., type „c“ position 4 se-tenant with surcharge position 5 on blank sheet margin, cancelled bluish c.d.s. on small piece, minimal perf. toning, scarce	178 △	100,-
608 2 c. on 2 M., type „c“, positions 3 and 4, Inverted Surcharge, tied c.d.s. on small pieces, stamps off center	178 a △	75,-

Los-Nr.		Scott No.	Ausruf DM
P 609	2 c. on 2 M., type „c“, Inverted Surcharge, two examples of position 4 on small pieces, cancelled blue and black c.d.s. respectively	178 a Δ	100,-
P 610	2 c. on 2 M., types „c“ and „d“ se-tenant, horizontal pair, positions 2–3, o.g., also signed Bartels, fresh	178/179 *	100,-
P 611	2 c. on 2 M., types „c“ and „d“ se-tenant, diagonally struck on horizontal strip of four, positions 2–5, o.g., fresh and rare multiple, ex Tows collection	178/179 *	500,-
P 612	2 c. on 2 M., types „c“ and „d“, horizontal strip of five, o.g., some re-inforcement, thin spot, very rare complete setting, ex Hawkins collection	178/179 *	1000,-
P 613	2 c. on 2 M., type „c“ and „d“, single and two horizontal pairs comprising the complete setting cancelled c.d.s. of January 1899 on reverse of Registered envelope to Germany, the only recorded cover to Germany bearing stamps of Puerto Principe, ex Brock collection, Friedl Certificate	178/179 \boxtimes	1000,-
P 614	2 c. on 2 M., types „c“ and „d“ se-tenant, horizontal pair with Inverted Surcharge, positions 1–2, cancelled blue c.d.s. on small piece, negligible perf. toning	178 a/179 a Δ	200,-
615	2 c. on 2 M., type „c“, position 1 plus type „d“ position 2, both Inverted Surcharge, tied black c.d.s. on small pieces, small faults	178 a/179 a Δ	75,-
P 616	2 c. on 2 M., types „c“ and „d“ setenant, horizontal pair with Inverted Surcharge, positions 2–3, canceled blue c.d.s., centered to bottom	178 a/179 a \odot	200,-
617	3 c. on 3 M., type „e“ position 1 plus type „f“ position 2, cancelled in black or bluish	180, 181 \odot	50,-
P 618	3 c. on 3 M., types „e“ and „f“ se-tenant, horizontal strip of three, positions 1, 2, 3, cancelled blue c.d.s. on piece, usual perf. tones, rare multiple	180/181 Δ	250,-
619	3 c. on 3 M., type „e“, position 4, plus 2 copies type „f“ position 2, o.g. or unused, usual small faults	180, 181 */(*)	100,-
620	3 c. on 3 M., type „e“ position 4, plus type „f“ position 2, off center, cancelled in black	180, 181 \odot	50,-
P 621	3 c. on 3 M., type „e“, Inverted Surcharge, position 1 with blank label at right, tied blue c.d.s. on piece	180 a Δ	100,-
P 622	3 c. on 3 M., type „e“, Inverted Surcharge, position 3, cancelled portion blue c.d.s., ex Tows collection	180 a \odot	75,-
P 623	3 c. on 3 M., type „e“, Inverted Surcharge, position 4, tied by blue c.d.s. on corner of envelope, ex Tows collection	180 a Δ	75,-
P 624	3 c. on 3 M., type „e“, Inverted Surcharge, position 5, short perf., blue c.d.s., fresh	180 a \odot	75,-
625	3 c. on 3 M., type „e“, Inverted Surcharge, position 5 with portion left sheet margin, tied blue c.d.s. on piece	180 a Δ	75,-
P 626	3 c. on 3 M., types „e“ und „f“ se-tenant, horizontal pair, positions 1–2, Inverted Surcharge, cancelled single black c.d.s. on small piece, very scarce	180 a/181 a Δ	400,-

Los-Nr.	Scott No.	Ausruf DM
[P] 627 3 c. on 3 M., types „e“ and „f“ se-tenant, horizontal pair positions 1-2, Inverted Surcharge, cancelled single blue c.d.s. on piece, ex Tows collection	180 a/181 a Δ	400,-
[P] 628 5 c. on 5 M., type „g“, position 4, tied by blue c.d.s. in combination with U.S.A. 2 c. Washington on small piece, very scarce, ex Tows collection	188 Δ	150,-
629 1 c. on 1 M., 2 c on 2 M. and 5 c on 5 M., the selection of 8 stamps, o.g., unused or used, all position numbers noted on reverse of each stamp, some faults, worth examination	176, 178, 179, 188 */⊙/Δ	100,-
[P] 630 5 c. on 5 M., type „g“, Inverted Surcharge, position 3, black c.d.s.	188 a ⊙	100,-
[P] 631 5 c. on 1 M., type „g“, Inverted Surcharge, position 3, cancelled 'Puerto Principe. December 19 1898' on envelope to Nuevitas, slightly reduced at left and some paper adherence on front. The only known FIRST DAY COVER, extremely rare showpiece! Ex. Tows collection, Friedl Certificate	188 a ⊗	2500,-
[P] 632 5 c. on 5 M., type „g“, Inverted Surcharge, position 4, tied full bluish c.d.s. on small piece	188 a Δ	100,-
[P] 633 5 c. on 5 M., type „g“, Inverted Surcharge, position 5, se-tenant with blank gutter at left, cancelled c.d.s., ex Brock collection	188 a ⊙	150,-
[P] 634 5 c. on 5 M., type „h“, position 2, cancelled black c.d.s. on small piece, also signed Bartels, rare stamp	189 ⊙	250,-
[P] 635 5 c. on 5 M., type „g“ and „h“, Inverted Surcharge, positions 2 and 1, horizontal pair cancelled black c.d.s. on small piece, negligible perf. tones, scarce, Friedl Certificate	188 a/189 a Δ	500,-

Second Printing

Black Surcharge 17½ mm high. Clearer Impression, Shiny Ink

[P] 636 3 c. on 2 M., type „e“, position 4, cancelled portion black c.d.s., minor faults but a rare stamp, unpriced in Scott, ex Tows collection, Friedl Certificate	179 F ⊙	500,-
[P] 637 3 c. on 2 M., type „f“, position 2, cancelled portion black c.d.s. on small piece, small thin at top, scarce stamp, unpriced in Scott, ex Tows collection, Friedl Certificate	179 G Δ	400,-
[P] 638 5 c. on 1 M., type „g“, position 3, cancelled scarce oval 'Military Station' postmark, fresh, ex Tows collection	182 ⊙	100,-
[P] 639 5 c. on 1 M., type „g“, position 5, centered to lower right, cancelled black c.d.s. on small piece, ex Bartels collection	182 Δ	100,-
[P] 640 5 c. on 1 M., type „g“, Inverted Surcharge, position 4, cancelled black c.d.s. on small piece, ex Tows collection	182 a Δ	500,-
[P] 641 5 c. on 1 M., type „g“ and „h“, positions 1 and 2 se-tenant in a horizontal pair, cancelled c.d.s. on small orange piece, fresh, ex Tows collection	182/183 Δ	600,-
[P] 642 5 c. on 1 M., type „g“ and „h“, positions 2 and 3 in a horizontal pair, o.g., extremely rare multiple (Catalogued \$1550 +), ex Tows collection, Friedl Certificate	182/183 *	2000,-

Los-Nr.		Scott No.	Ausruf DM
P 643	5 c. on 1 M., type „g“ and „h“, Inverted Surcharge, positions 2 and 1 in a horizontal pair, some perf. staining, cancelled single c.d.s. on small piece, rare (Catalogued \$ 1000 +), ex Tows collection, Friedl Certificate	182 a/183 a Δ	1500,-
P 644	5 c. on 1 M., type „h“, position 2, cancelled portion black c.d.s., traces of o.g. on reverse, scarce, ex Brock collection	183 \odot	350,-
P 645	5 c. on 1 M., type „h“, Inverted Surcharge, position 2, tied to small piece by black c.d.s., very rare, Friedl Certificate	183 a Δ	300,-
P 646	5 c. on 2 M., type „g“, position 3, cancelled almost full strike 'Military Station' postmark on small piece, ex Tows collection	184 Δ	250,-
P 647	5 c. on 2 M., type „g“, position 4, cancelled portion black c.d.s., also signed Bartels	184 \odot	250,-
P 648	5 c. on 2 M., type „g“ and „h“, positions 1 and 2 in a horizontal pair, slight perf. staining, cancelled single black c.d.s. on small piece, scarce, Friedl Certificate	184/185 Δ	600,-
P 649	5 c. on 3 M., type „g“, position 1, cancelled portion black c.d.s., slight toning	186 \odot	100,-
P 650	5 c. on 3 M., type „g“, position 3, well centered, cancelled black c.d.s. on small piece	186 Δ	120,-
P 651	5 c. on 3 M., type „g“, position 4, tied by oval Military Station datestamp on small piece, very scarce, ex Tows collection	186 Δ	150,-
P 652	5 c. on 3 M., type „g“, position 4 se-tenant with surcharge position 5 on blank gutter at right, cancelled black c.d.s. on small piece, ex Tows collection	186 Δ	150,-
P 653	5 c. on 3 M., type „g“, Inverted Surcharge, position 1, cancelled black c.d.s. on small piece, fresh, ex Tows collection, Friedl Certificate	186 a Δ	500,-
P 654	5 c. on 3 M., type „g“, Inverted Surcharge, position 4, minimal staining, cancelled black c.d.s. on small piece, ex Tows collection, Friedl Certificate	186 a Δ	350,-
P 655	5 c. on 3 M., type „h“, position 2, very well centered for this issue, cancelled black c.d.s. on small piece	187 Δ	400,-
P 656	5 c. on 5 M., type „g“ and „h“, shiny ink of 2nd. printing, positions 1, 2 as severed pair tied by black c.d.s. on a small piece	188/189 Δ	300,-
P 657	5 c. on 5 M., type „g“, shiny ink of 2nd. printing, Inverted Surcharge, position 4, o.g., fresh, rare stamp	188 a *	500,-
P 658	5 c. on 5 M., type „g“, shiny ink of 2nd. printing, position 3 with light DOUBLE Surcharge cancelled black c.d.s. on small piece, rare, ex Tows collection	188 b Δ	200,-
P 659	5 c. on 5 M., type „h“, shiny ink of 2nd. printing, position 2, cancelled black c.d.s. on small piece, ex Bartels collection	189 Δ	200,-
P 660	5 c. on 5 M., types „g“ and „h“, shiny ink of 2nd. printing, positions 1, 2 se-tenant showing faint but clear DOUBLE SURCHARGE, cancelled black c.d.s. on piece, small faults, very rare, unpriced Scott	188 b/189 b Δ	600,-
P 661	5 c. on 1/2 M., type „g“, position 4, o.g., fresh, very scarce, ex Tows collection	190 *	200,-
P 662	5 c. on 1/2 M., type „g“, position 1, tied bluish-black c.d.s. on small piece	190 Δ	75,-

Los-Nr.	Scott No.	Ausruf DM
[P] 663 5 c. on 1/2 M., type „g“, position 3, very well centered for this issue, tied black c.d.s. on small piece	190 Δ	100,-
664 5 c. on 1/2 M., type „g“, position 3 se-tenant with surcharge position 5 on adjoining blank gutter cancelled c.d.s. on small piece, plus single right sheet margin struck with surcharge position 5, some faults	190 \odot/Δ	75,-
[P] 665 5 c. on 1/2 M., type „g“, position 4, tied black c.d.s. on small piece	190 Δ	75,-
[P] 666 5 c. on 1/2 M., type „g“, position 5, unused without gum, ink marks on face, extensive guarantee marks on reverse	190 (*)	100,-
[P] 667 5 c. on 1/2 M., type „g“, horizontal strip of three of the surcharge, positions 3, 4 and 5, center being blank gutter, cancelled bluish c.d.s. on small piece, light crease, ex Tows collection	190 Δ	200,-
[P] 668 5 c. on 1/2 M., type „g“, Inverted Surcharge, position 3, part o.g., fresh color, ex Tows collection	190 a *	250,-
[P] 669 5 c. on 1/2 M., type „g“, Inverted Surcharge, position 1, cancelled black c.d.s. on small piece, ex Tows collection	190 a Δ	100,-
[P] 670 5 c. on 1/2 M., type „g“, Inverted Surcharge, position 3, cancelled black c.d.s. on small piece	190 a Δ	100,-
[P] 671 5 c. on 1/2 M., type „g“, Inverted Surcharge, position 4, cancelled black c.d.s. on small piece, ex Brock collection	190 a Δ	100,-
[P] 672 5 c. on 1/2 M., type „g“, Inverted Surcharge, position 5, cancelled black c.d.s. on small piece, fresh, ex Tows collection	190 a Δ	150,-
[P] 673 5 c. on 1/2 M., type „g“, position 1 in pair, left stamp without surcharge, cancelled bluish c.d.s. on small piece, slight staining	190 b Δ	100,-
[P] 674 5 c. on 1/2 M., type „g“, position 5 in pair, right stamp without surcharge, cancelled bluish black c.d.s. on small piece, fresh	190 b Δ	150,-
[P] 675 5 c. on 1/2 M., type „g“, horizontal strip of three, center being a gutter and right stamp without surcharge, positions 4 and 5, cancelled bluish black c.d.s. on small piece, slight staining, ex Tows collection, Friedl Certificate	190 b var Δ	250,-
676 5 c. on 1/2 M., type „h“, position 2 in pair with surcharge position 1 on left gutter, cancelled black c.d.s. on small piece, ex Tows collection, plus additional copy of the position 1 stamp cancelled in bluish, some staining	190/191 \odot/Δ	120,-
[P] 677 5 c. on 1/2 M., type „g“ and „h“, Inverted Surcharge, scarce horizontal strip of three of the surcharge, extreme right impression being on a blank gutter, positions 3, 2 and 1, cancelled black c.d.s. on small piece, ex Tows collection, Friedl Certificate	190 a/191 a Δ	400,-
[P] 678 5 c. on 1/2 M., type „g“, position 3 se-tenant in horizontal strip of three of the surcharge, positions 1 and 2 struck in left sheet margin, cancelled bluish black c.d.s. on small piece, slight staining, scarce, ex Tows collection, Friedl Certificate	190/191.var Δ	250,-

The prices quoted for each lot are **STARTING PRICES**

Los-Nr.		Scott No.	Ausruf DM
P 679	5 c. on 1/2 M., type „h“, position 2, cancelled black c.d.s. on small piece	191 Δ	100,-
P 680	5 c. on 1/2 M., type „h“, position 2 se-tenant with surcharge position 1 on blank gutter at left, cancelled black c.d.s. on small piece, ex Tows collection	191 Δ	100,-
P 681	5 c. on 1/2 M., type „h“, Inverted Surcharge, position 2, cancelled black c.d.s. on small piece, ex Brock collection	191 a Δ	200,-
Third Printing			
Red Surcharge 20 mm high			
P 682	3 c. on 1 c., type „k“, position 3, cancelled with smeared SANTA CRUZ DEL SUR, very scarce	196 ⊙	50,-
P 683	3 c. on - c., type „k“, position 4 se-tenant with surcharge position 5 on blank perforated label at right, cancelled black c.d.s. on piece, ex Tows collection	196 Δ	75,-
P 684	3 c. on 1 c., type „k“, position 5, tied black c.d.s. of 1899 to cover addressed to Habana, some staining and portion of reverse missing, nevertheless very rare, ex Tows collection, Friedl Certificate	196 ⊠	500,-
P 685	3 c. on 1 c., types „k“ and „l“, positions 1, 2 se-tenant, cancelled single black c.d.s. on piece, fresh, very fine	196/197 Δ	100,-
686	3 c. on 1 c., types „k“ and „l“, reconstruction of all five positions of the setting, plus duplicate of position 5, cancelled in black or bluish black, most ex Tows collection	196/197 ⊙/Δ	100,-
P 687	3 c. on 1 c., type „k“, Inverted Surcharge, position 1, lightly tied black c.d.s. on small piece, fresh, ex Tows collection	196 a Δ	100,-
P 688	3 c. on 1 c., type „k“, Inverted Surcharge, position 1, cancelled black c.d.s. on small piece, ex Tows collection	196 a Δ	100,-
P 689	3 c. on 1 c., type „k“, Inverted Surcharge, position 3, cancelled black c.d.s. on small blue piece, fresh, ex Tows collection	196 a Δ	100,-
P 690	3 c. on 1 c., type „k“, Inverted Surcharge, position 5, cancelled black c.d.s., ex Bartels collection	196 a ⊙	75,-
P 691	3 c. on 1 c., type „l“, position 2, tied black c.d.s. on small piece, fresh, ex Tows collection	197 Δ	50,-
P 692	3 c. on 1 c., type „l“, Inverted Surcharge, position 2, cancelled black c.d.s. on small piece, some perf. tones, scarce, ex Bartels collection	197 a Δ	100,-
P 693	5 c. on 1 c., types „i“ and „j“, horizontal pair, positions 1 and 2, o.g.	198/199 *	100,-
P 694	5 c. on 1 c., types „i“ and „j“, horizontal pair, positions 2 and 3, o.g., light crease, ex Bartels collection	198/199 *	75,-
P 695	5 c. on 1 c., types „i“ and „j“, positions 1, 2, 5 all cancelled scarce oval Military Station postmarks on small pieces, pos. 1 ex Tows collection	198/199 Δ	150,-
696	5 c. on 1 c., types „i“ and „j“, the selection comprising positions 1, 2, 4, 5 (2) cancelled in black including 3 on small pieces, most ex Tows collection	198/199 ⊙/Δ	75,-

Los-Nr.		Scott No.	Ausruf DM
P 697	5 c. on 1 c., types „i“ and „j“, Inverted Surcharge, positions 1 and 2, cancelled c.d.s. on small pieces, one with light toning	198 a/199 a Δ	120,-
P 698	5 c. on 1 c., type „i“, Vertical Surcharge reading up, position 1, cancelled black c.d.s. on small piece, scarce, Friedl Certificate	198 b Δ	300,-
P 699	5 c. on 1 c., type „i“, Vertical Surcharge reading down, position 3, slight toning, cancelled black c.d.s. on small piece, scarce, ex Tows collection, Friedl Certificate	198 b Δ	200,-
P 700	5 c. on 1 c., type „i“, positions 4 and 5, rare vertical pair, variety Vertical Surcharge reading up, cancelled single back c.d.s. on small piece, fresh, Friedl Certificate	198 b Δ	600,-
P 701	5 c. on 1 c., type „i“, Double Surcharge, position 3, o.g., centered to lower right, Friedl Certificate	198 c *	200,-
P 702	5 c. on 1 c., type „i“, Double Surcharge, position 4, o.g., centered to right, ex Hawkins collection, Friedl Certificate	198 c *	200,-
P 703	5 c. on 1 c., type „i“, Double Surcharge, position 5, o.g., centered to right, Friedl Certificate	198 c *	200,-
P 704	5 c. on 1 c., types „i“ and „j“, Double Surcharge, positions 1 and 2 in horizontal pair, o.g., left stamp minute stain at bottom, ex Tows collection, Friedl Certificate	198 c/199 c *	600,-
P 705	5 c. on 1 c., type „j“, position 2, o.g., minimal toning, scarce	199 *	50,-
P 706	5 c. on 1 c., type „j“, Vertical Surcharge reading up, position 2, slight toning, cancelled bluish c.d.s. on small piece, Friedl Certificate	199 b Δ	200,-
P 707	10 c. on 1 c., type „m“, position 5, tied almost full strike oval Military Station postmark on small piece, fresh	200 Δ	50,-
708	10 c. on 1 c., type „m“, 2 used and 2 o.g. comprising position 1, 2 (2) and 4, some faults, worth inspection	200, 200 a */⊙	60,-
P 709	10 c. on 1 c., type „m“, horizontal pair positions 4, 5, tied black c.d.s. on small piece	200/200 a Δ	150,-
P 710	10 c. on 1 c., type „m“, horizontal strip of five, o.g., some re-inforcement, rare complete setting, ex Bartels collection	200/200 a *	350,-

Fourth Printing

Black Surcharge 19½ mm. high. Clear Impression, shiny ink.

P 711	1 c. on 1 M., type „b“, positions 1, 3 plus position 2, latter with variety „broken figure 1“, tied to pieces, cancels include Military Station	177, 177 a Δ	100,-
712	1 c. on 1 M., type „b“, positions 2, 3 se-tenant, left stamp „broken figure 1“, o.g., minor stains, some re-inforcement	177/177 a *	75,-
P 713	1 c. on 1 M., type „b“, Inverted Surcharge, position 3, tied to small piece by bluish c.d.s., minimal perf. tones at top, ex Tows collection	177 b Δ	200,-
P 714	1 c. on 1 M., type „b“, Inverted Surcharge, position 5, lightly cancelled black c.d.s.	177 b ⊙	200,-
P 715	1 c. on 1 M., type „b“, Inverted Surcharge, position 5, rounded corner at lower left, tied to small piece by black c.d.s.	177 b Δ	100,-

Los-Nr.	Scott No.	Ausruf DM
P 716 1 c. on 1 M., type „b“, Inverted Surcharge, position 5, tied to small piece by bluish black c.d.s.	177 b Δ	200,-
P 717 1 c. on 1 M., type „b“, Inverted Surcharge, position 2 showing variety „broken figure 1“, tied to small piece by bluish black c.d.s., very scarce, ex Tows collection	177 d Δ	300,-
P 718 3 c. on 1 M., type „k“, horizontal pair centered to right, positions 1 and 2, cancelled single black c.d.s. on small piece, light crease	179 B Δ	220,-
P 719 3 c. on 1 M., type „k“, position 3, cancelled portion black c.d.s., fresh	179 B \odot	100,-
P 720 3 c. on 1 M., type „k“, position 3, unused single without gum, upper portion of surcharge showing „kiss print“, small thins, fine appearance, ex Tows collection	179 B (*)	100,-
P 721 3 c. on 1 M., type „k“, position 5, cancelled bluish black c.d.s. on small piece	179 B Δ	100,-
P 722 3 c. on 1 M., type „k“, position 5, cancelled portion black c.d.s. on small piece	179 B Δ	100,-
P 723 3 c. on 1 M., type „k“, Double Surcharge, position 3, cancelled in black on small piece, unpriced in Scott, very rare, Friedl Certificate	179 B c Δ	600,-
P 724 3 c. on 1 M., type „l“, position 4, nicely centered for this issue, cancelled black c.d.s., scarce	179 D \odot	600,-
P 725 3 c. on 1 M., type „l“, position 4, centered to right, cancelled black c.d.s. on small piece, scarce stamp, insignificant perf. tones	179 D Δ	500,-
P 726 5 c. on 1 M., type „i“, position 3. The ONLY RECORD COPY of this stamp, cancelled portion black c.d.s., tiny faults, quite insignificant in an item of this outstanding rarity! Ex Tows collection, Friedl Certificate	183 B \odot	3500,-
P 727 5 c. on 1/2 M., type „i“, position 3, cancelled portion bluish black c.d.s., upper portion of surcharge „kiss print“, ex Tows collection	192 \odot	150,-
P 728 5 c. on 1/2 M., type „i“, position 5, cancelled portion bluish black c.d.s., thinned, fine appearance	192 \odot	75,-
P 729 5 c. on 1/2 M., types „i“ and „j“, positions 1, 2 in horizontal pair, some perf. tones, tied to small piece by single c.d.s., very scarce multiple	192/193 Δ	250,-
P 730 5 c. on 1/2 M., types „i“ and „j“, positions 1 and 2 se-tenant in horizontal pair cancelled single c.d.s. on small piece, ex Brock collection	192/193 Δ	500,-
P 731 5 c. on 1/2 M., types „i“ and „j“, positions 2, 3 and 4 in horizontal strip of three, center being a blank gutter with surcharge type „i“, slightly stained, cancelled c.d.s. on piece, ex Tows collection, Friedl Certificate	192/193 Δ	300,-

BID QUICKLY AND CONFIDENTIALLY BY "TELEX"

Los-Nr.		Scott No.	Ausruf DM
P 732	5 c. on 1/2 M., type „i“, two examples in horizontal strip of three, center being a blank gutter with type „j“ surcharge, positions 1, 2 and 3, cancelled two strikes c.d.s. on small piece, ex Tows collections, Friedl Certificate	192/193 var. Δ	500,-
P 733	5 c. on 1/2 M., type „i“, Double Surcharge, One Diagonal, position 1, cancelled bluish c.d.s. on small piece, very rare, unpriced in Scott, ex Tows collection, Friedl Certificate	192 a Δ	1500,-
Fifth Printing			
Black Surcharge 19½ mm. high			
P 734	3 c. on 1 M., type „k“, position 1, o.g., centered to right, fresh, ex Bartels collection	201 *	150,-
P 735	3 c. on 1 M., type „k“, position 1, tied by clear strike of the „Military Station No. 11“ duplex on small piece, ex Tows collection	201 Δ	250,-
P 736	3 c. on 1 M., type „k“, position 5, o.g., some toning, centered to left	201 *	100,-
P 737	3 c. on 1 M., type „k“, position 5, o.g., centered to bottom	201 *	100,-
P 738	3 c. on 1 M., type „k“, position 5, well centered for issue, tied to small piece by black c.d.s., ex Tows collection	201 Δ	150,-
P 739	3 c. on 1 M., type „k“, Inverted Surcharge, position 1, centered to bottom, cancelled black c.d.s. on small piece, ex Tows collection	201 a Δ	120,-
P 740	3 c. on 1 M., type „k“, Inverted Surcharge, position 2, well centered for this issue, cancelled portion bluish black c.d.s. on small piece	201 a Δ	170,-
P 741	3 c. on 1 M., type „k“, Inverted Surcharge, position 5, centered to left, cancelled black c.d.s. on small piece, ex Tows collection	201 a Δ	150,-
P 742	3 c. on 1 M., type „k“, position 3 variety „EENTS“, o.g., ex Bartels collection, very scarce	201 b *	500,-
P 743	3 c. on 1 M., type „k“, position 3 variety „EENTS“, cancelled with bluish black c.d.s., light toning	201 b ⊙	150,-
P 744	3 c. on 1 M., type „k“, Inverted Surcharge, with left sheet margin showing variety „EENTS“, positions 2 and 3, cancelled c.d.s. on piece, slight climatic toning, Friedl Certificate	201 a/201 c.var Δ	200,-
P 745	3 c. on 1 M., type „l“, position 4 se-tenant with surcharge type „k“ position 5 on adjoining blank perforated label, some toning, tied to small piece by black c.d.s., scarce	202 Δ	250,-
P 746	3 c. on 1 M., type „l“, Inverted Surcharge, position 4, tied to small piece by c.d.s., slight climatic toning, scarce, Friedl Certificate	202 a Δ	600,-
P 747	3 c. on 2 M., type „k“, position 1, lightly cancelled by blackish c.d.s. on small piece, ex Block collection	203 Δ	300,-
P 748	3 c. on 2 M., type „k“, position 3 with variety „EENTS“, minute tone spots, tied to small piece by black c.d.s., rare	203 a Δ	400,-

Los-Nr.	Scott No.	Ausruf DM
P 749 3 c. on 2 M., type „k“, Inverted Surcharge, position 1, cancelled bluish c.d.s. on small piece, minor toning, rare, ex Tows collection	203 b Δ	650,-
P 750 3 c. on 2 M., type „l“, position 4, centered to right, black c.d.s., minor climatic toning, rare	204 \odot	250,-
P 751 3 c. on 3 M., type „k“, position 2, cancelled c.d.s., fresh, ex Tows collection	205 \odot	150,-
P 752 3 c. on 3 M., type „k“, position 5 with adjoining right sheet margin, cancelled bluish c.d.s. on small piece, some ms. in margin, ex Tows collection	205 Δ	100,-
P 753 3 c. on 3 M., type „k“, Inverted Surcharge, position 1, cancelled bluish c.d.s. on small piece, ex Tows collection	205 a Δ	300,-
P 754 3 c. on 3 M., type „k“, Inverted Surcharge, position 2, cancelled bluish c.d.s.	205 a \odot	300,-
P 755 3 c. on 3 M., type „k“, position 3 variety „EENTS“, cancelled bluish c.d.s., ex Tows collection	205 b \odot	250,-
P 756 3 c. on 3 M., type „l“, position 4, cancelled black c.d.s., minor faults but very rare	206 \odot	150,-
P 757 3 c. on 3 M., type „l“, position 4 se-tenant with surcharge type „k“ position 5 on right sheet margin, cancelled bluish c.d.s. on small piece, very rare, ex Tows collection	206 Δ	600,-
P 758 5 c. on 1 M., type „i“, position 1, cancelled c.d.s. on small piece, very rare (Catalogued \$ 1000), ex Tows collection, Friedl Certificate	211 Δ	1200,-
P 759 5 c. on 1 M., type „i“, position 3 with variety „EENTS“, tied bluish c.d.s. on small piece, very rare (Catalogued \$ 1600), ex Tows collection, Friedl Certificate	211 a Δ	1500,-
P 760 5 c. on 1 M., type „j“, position 4, cancelled portion black c.d.s., some staining, rare stamp (Catalogued \$ 1600), Friedl Certificate	212 \odot	500,-
P 761 5 c. on 3 M., type „i“, position 3 with variety „EENTS“, cancelled portion bluish black c.d.s., ex Tows collection, Friedl Certificate	215 a \odot	500,-
P 762 5 c. on 4 M., type „i“, position 1, o.g., centered to top, one of the rarest stamps in Puerto Principe (Catalogued \$ 1500), Friedl Certificate	217 *	1500,-
P 763 5 c. on 4 M., type „i“, position 3 with variety „EENTS“, o.g., fresh, GREAT RARITY, unpriced in Scott, Friedl Certificate	217 a *	1500,-
P 764 5 c. on 4 M., type „i“, Inverted Surcharge, position 2, cancelled portion black c.d.s., natural paper flaw, rare (Catalogued \$600), ex Tows collection, Friedl Certificate	217 b \odot	600,-
P 765 5 c. on 4 M., types „i“ and „j“, horizontal pair positions 4 and 5, right stamp damaged, cancelled blue c.d.s. on registered envelope to New York. Despite defects, a famed and unique cover, ex Tows collection, Friedl Certificate	217/218 \boxtimes	2500,-
P 766 5 c. on 8 M., type „i“, position 1, cancelled portion c.d.s., centered to left, light thinning, rare (Catalogued \$ 750), ex Tows collection, Friedl Certificate	219 \odot	300,-

Los-Nr.	Scott No.	Ausruf DM
[P] 767 5 c. on 8 M., type „i“, Inverted Surcharge, position 2, slight staining, tied c.d.s. on small piece, rare stamp (Catalogued \$ 1000), Friedl Certificate	219 a Δ	750,-
[P] 768 5 c. on 8 M., type „i“, position 3 with variety „EENTS“, cancelled bluish c.d.s., light thinning, fresh, rare stamp (Catalogued \$ 1500), Friedl Certificate	219 b \odot	700,-
[P] 769 5 c. on 4 M., type „j“, Inverted Surcharge, position 4, minor staining, cancelled almost complete black c.d.s. on small piece, ex Tows collection, Friedl Certificate	218 a Δ	1000,-
[P] 770 5 c. on 8 M., type „j“, position 4, slight staining, cancelled black c.d.s. on small piece, Friedl Certificate	220 Δ	1200,-
[P] 771 5 c. on 8 M., type „j“, position 4, off-center example of this rare stamp (Catalogued \$ 1650) tied by c.d.s. to small piece, ex Tows collection, Friedl Certificate	220 Δ	1500,-
772 3 c. on 1 M. (2) and 5 c. on 3 M., one o.g. and two on pieces, ex Brock, Tows etc. In the opinion of Mr. Herbert Bloch, these are forgeries and are being offered as reference copies, sold „as is“ without return	* / Δ	50,-
773 Cuba, Puerto Principe, Puerto Rico, Ref.-Collection of forgeries, interesting lot in album		Bid/Gebot
[P] 774 Spanish Antilles: Cuba incl. US issues, Puerto Rico etc., the collection mint/used with some covers, ovpts. specialized, scarcer items, blocks, proofs, some Fournier forgeries added, many worthwhile items deserving careful inspection		10 000,-

DANISH WEST INDIES

Danish West Indies, in our days the west part of the Virgin Islands, located east of Puerto Rico, consisted of three larger islands St. Thomas from 1671, St. Jan from 1684 and the largest of them all St. Croix, bought by France in 1733, and a number of smaller islands. The Danish West Indies was sold to USA accessible April 1st, 1917 and the price was \$ 25 mill. From 1837 an English agent took care of the postal service between Europe, the West Indies and South America. This was done in co-operation with the Royal Steam Packet Company and later on also with HAPAG (Hamburg American Packet Company) and other shipping companies.

[P] 775 „S. TOMAS“, boxed cancel in black affixed in San Juan on small neat cover to Mayaguez/Porto Rico, matching straight line „PONCE“ and m/s. „2“, on reverse m/s. „forwarded 6th March 52“ very rare, ex Tows collection	\boxtimes	2750,-
[P] 776 „S. TOMAS“, boxed cancel in blue affixed in San Juan on cover to Mayaguez/Porto Rico, matching blue „1 R“, back-stamped black oval „FOREIGN LETTER OFFICE * ST THOMAS“, very rare, ex Tows coll.	\boxtimes	4500,-

PLEASE SEND YOUR BIDS EARLY!

Foreign Exchange

NEW YORK (AP)—Foreign Exchange,
New York prices.

	Fgn. currency in dollars		Dollar in fgn. currency	
	Wed.	Tue.	Wed.	Tue.
Argentina	.0012	.0012	914.50	914.50
Australia	1.1385	1.1370	.8783	.8795
Austria	.0710	.0710	14.09	14.08
Belgium	.0330	.0329	30.34	30.36
Bolivia	.0495	.0495	20.20	20.20
Brazil	.0510	.0510	19.59	19.59
Britain	1.9472	1.9435	.5135	.5145
30 day fut	1.9422	1.9385	.5148	.5158
60 day fut	1.9392	1.9355	.5156	.5166
90 day fut	1.9352	1.9312	.5167	.5178
Canada	.8523	.8523	1.1732	1.1732
30 day fut	.8525	.8528	1.1730	1.1726
60 day fut	.8530	.8530	1.1723	1.1723
90 day fut	.8535	.8538	1.1716	1.1712
Chile	.0301	.0301	33.22	33.22
Colombia	.0248	.0248	40.34	40.34
Denmark	.1874	.1874	5.3355	5.3360
yEgypt	2.54	2.54	.3935	.3935
yEcuador	.0371	.0371	26.95	26.95
France	.2270	.2266	4.4050	4.4120
Greece	.0273	.0273	36.60	36.60
Holland	.4792	.4786	2.0845	2.0880
Hong Kong	.2068	.2069	4.8350	4.8325
India	.1210	.1210	8.2644	8.2644
Indonesia	.0016	.0016	623.00	623.00
Iran	.01420	.01420	70.45	70.45
Israel	.0531	.0531	18.82	18.82
Italy	.001176	.001175	850.50	850.90
Japan	.005149	.005141	194.20	194.50
30 day fut	.005190	.005188	192.65	192.75

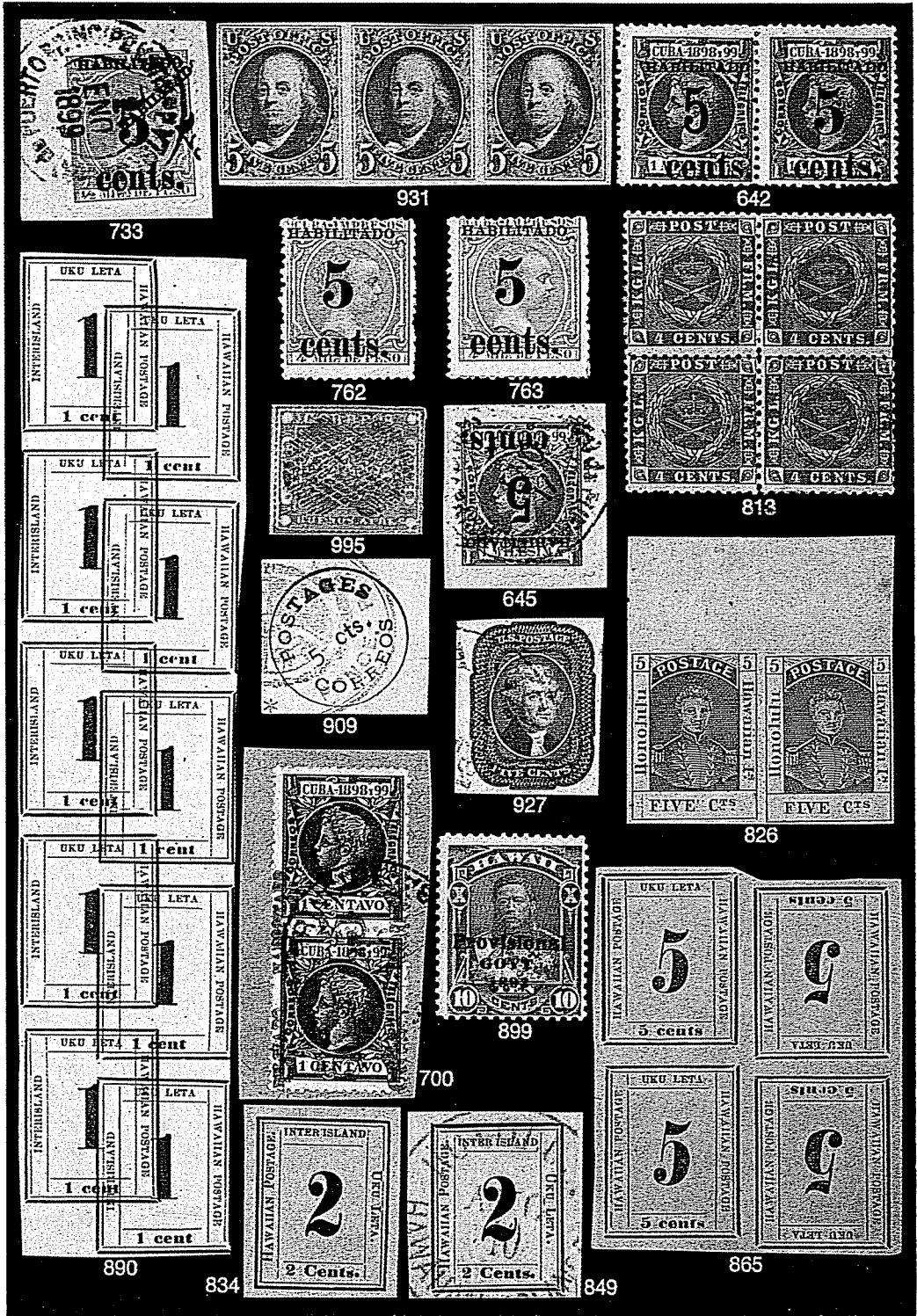
Fgn. currency Dollar in
in Dollar Fgn. currency

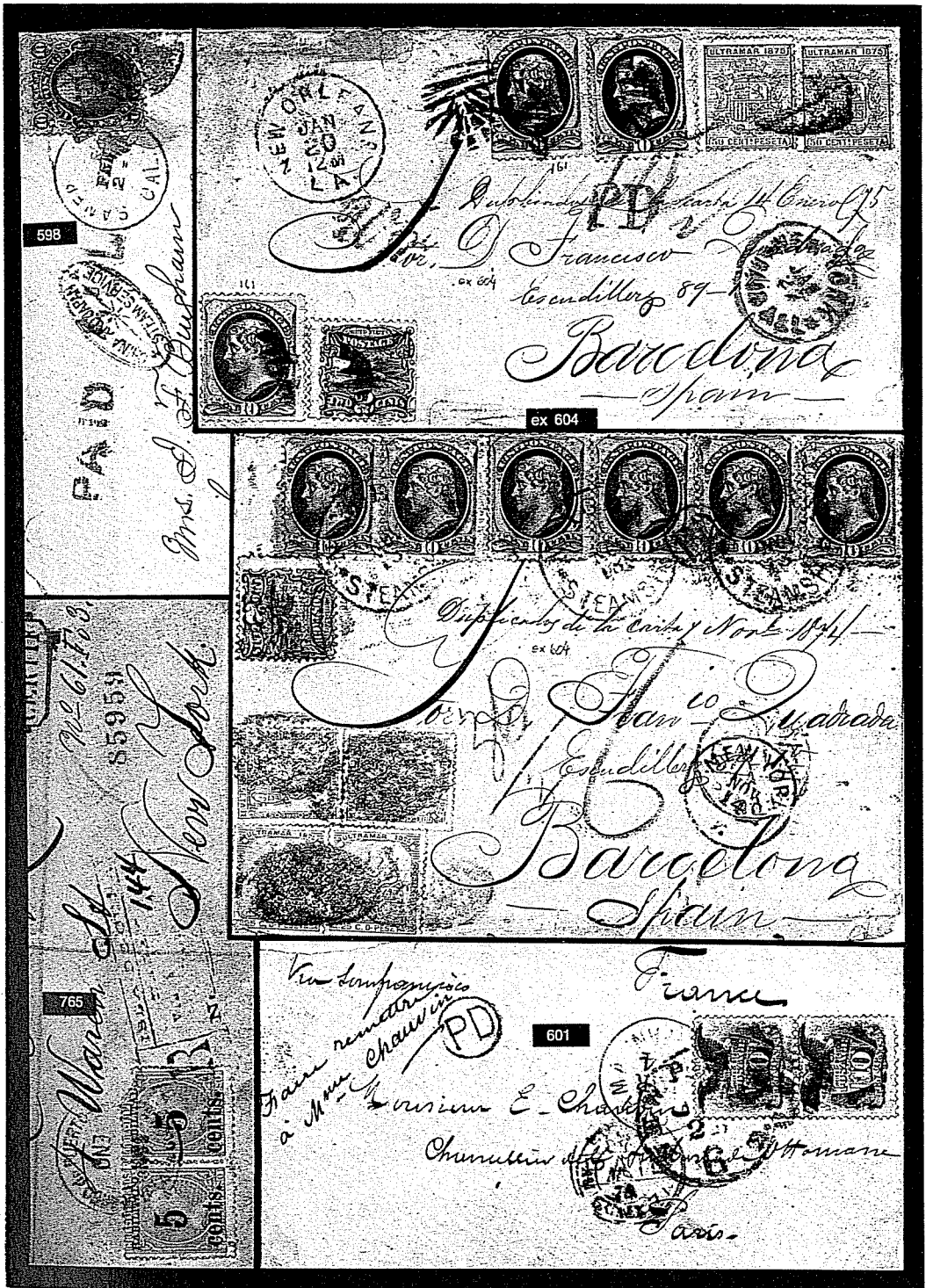
60 day fut	.005232	.005230	191.10	191.20
90 day fut	.005271	.005268	189.70	189.80
Jordan	3.3534	3.3534	.2982	.2982
Kuwait	3.6436	3.6456	.2744	.2743
Lebanon	.3294	.3294	3.0390	3.0390
Mexico	.0438	.0438	22.80	22.80
New Zealand	1.0455	1.0455	9564	9564
Norway	.1943	.1946	5.1460	5.1375
yPeru	.0054	.0054	186.46	186.46
Philippines	.3358	.3358	7.3585	7.3585
Portugal	.0214	.0213	46.80	46.90
Saudi Arab	.2971	.2971	3.3650	3.3650
Singapore	.4489	.4484	2.2275	2.2300
So. Africa	1.1500	1.1510	.8696	.8688
Spain	.0140	.0139	71.56	71.65
Sweden	.2265	.2267	4.4140	4.4112
Switzerland	.5798	.5783	1.7245	1.7290
30 day fut	.5857	.5832	1.7072	1.7146
60 day fut	.5867	.5887	1.7043	1.6986
90 day fut	.5973	.5947	1.6742	1.6815
Uruguay	.0148	.0148	6.7300	6.7300
Venezuela	.2329	.2329	4.2937	4.2937
W. Germany	.5199	.5194	1.9232	1.9250
30 day fut	.5218	.5230	1.9163	1.9120
60 day fut	.5251	.5302	1.9042	1.8860
90 day fut	.5290	.5398	1.8902	1.8522
Midday prices at New York & San Francisco banks, gathered by Bank of America, New York.				
x—Floating.				
y—Official rate				

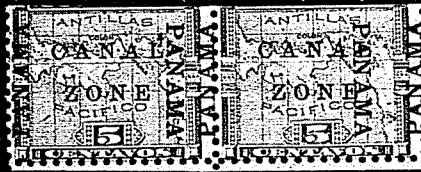
11/21/78
11/22/78



14. Stanley Gibbons Merkur Auktion 1978



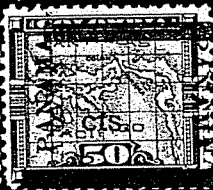




AMERICAN BANK NOTE COMPANY, NEW YORK



ex 603



622

614



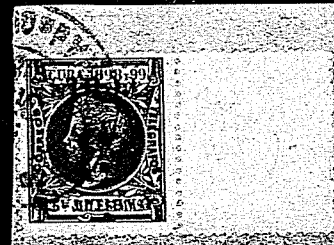
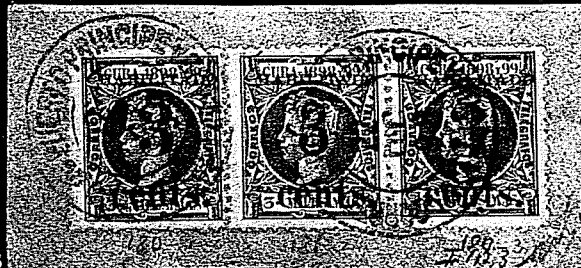
611

616



612

624



618

621





644

647

656

649

657



648



651



652



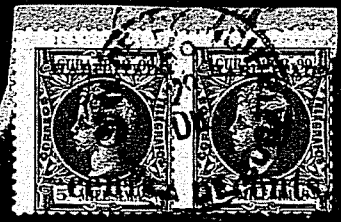
653



654



655



660



658



659



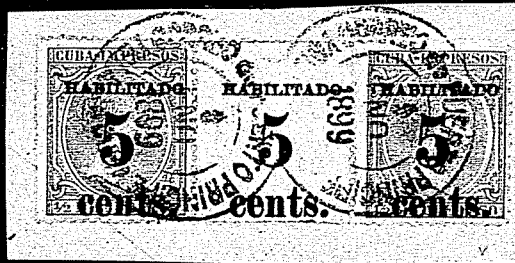
662



663



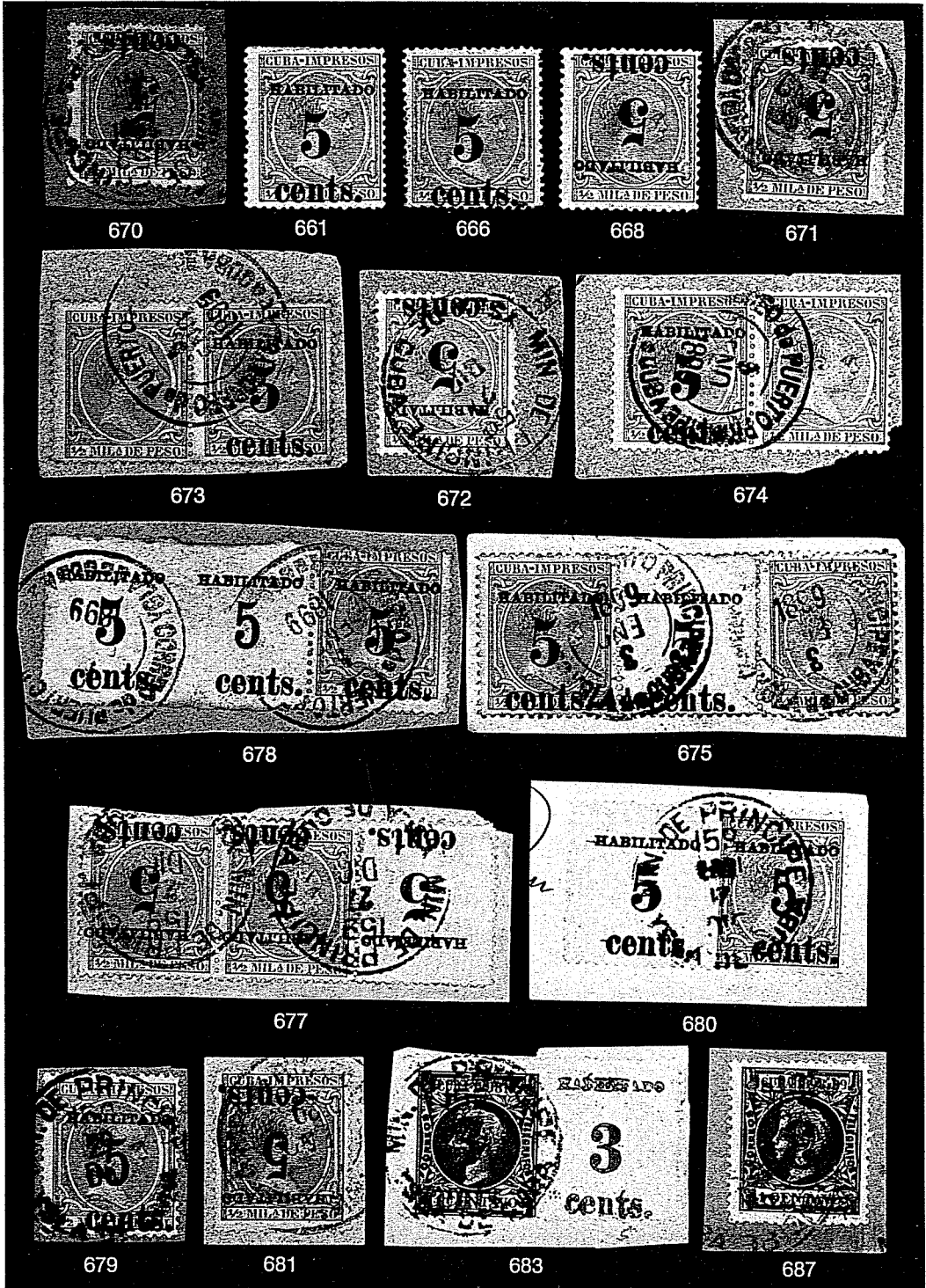
665



667



669





693

682

690

694



685



688



689



691



692



ex 695



ex 697



698



699



706



707



701



702



704



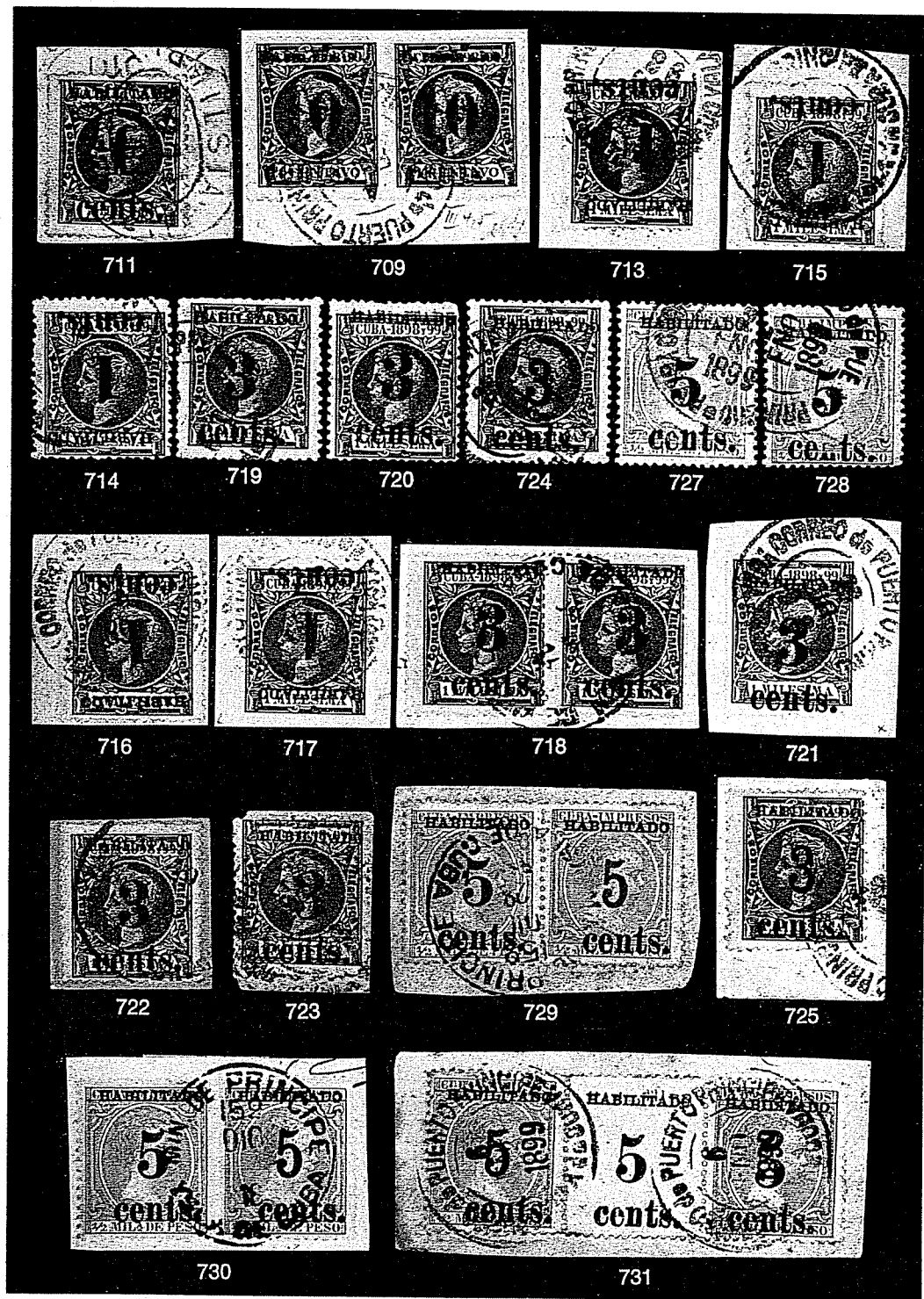
703



705

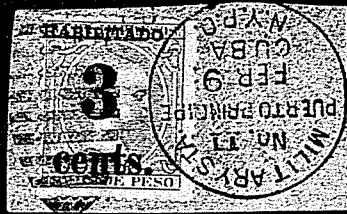


710





732



735



734



736



737



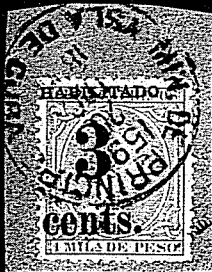
742



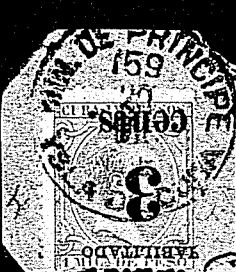
743



750



738



739



745



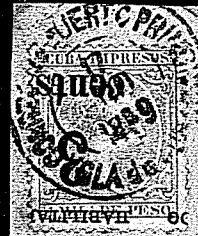
740



741



744



746



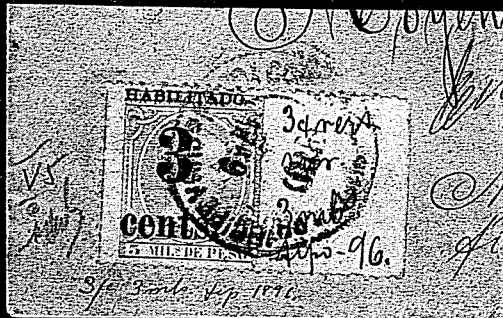
749



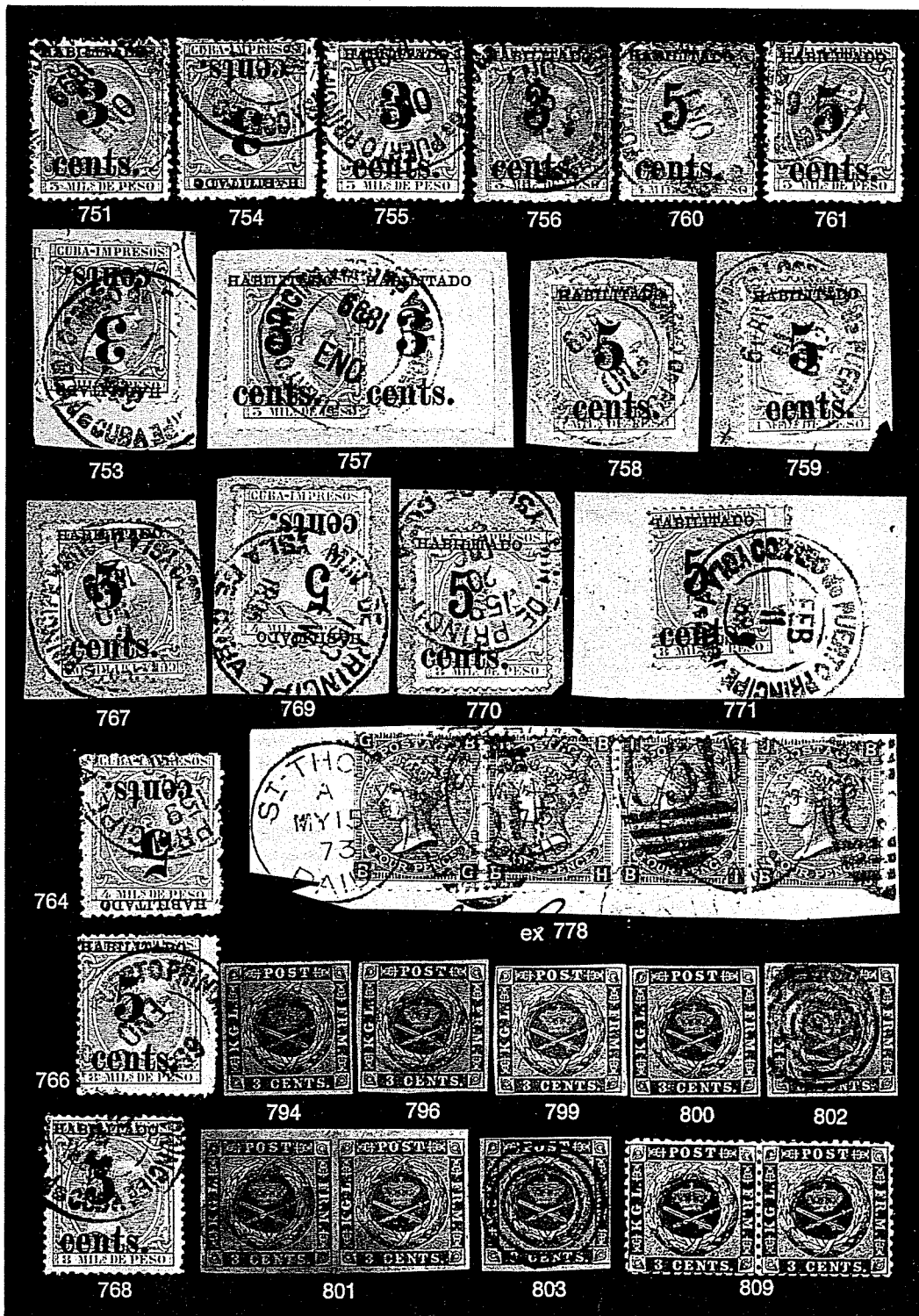
747



748



752



14. Stanley Gibbons Merkur Auktion 1978



14. Stanley Gibbons Merkur Auktion 1978

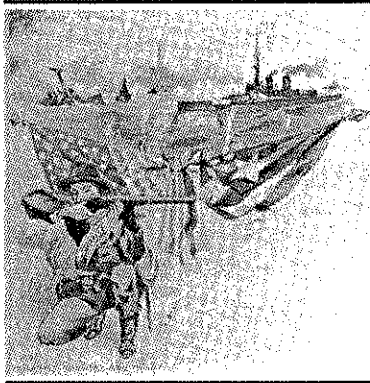
POSSESSIONS



The Journal of the
United States Possessions Philatelic Society



Vol. 1, No. 2, Whole No. 2
Fourth Quarter, 1978



CUBA



<BREW7810>

Juhring Puerto Principe — Prices Realized

By Geoffrey Brewster

On October 25, 1978, Stanley Gibbons of Frankfurt, West Germany auctioned the John C. Juhring Puerto Principe collection in their Auction No. 14. Here are selected prices realized, although because I understand from an eye witness that Stanley Gibbons was a heavy buyer at their own auction the prices may represent a manipulated market. I must assume that the descriptions are accurate and that the items are genuine in all respects. The stamps are listed by printing and Scott number. The 1978 *Scott's U.S. Specialized Catalog* price follows the realization in parentheses. I have converted all prices to U.S. Dollars, figuring the German Mark at 56¢.

First Printing: 178 var. single with margin at right, surcharge on stamp and margin, Pos. 4-5, Pos. 5 on margin, tied on piece \$151 (\$7.50+); 178a two copies tied on pieces \$72.50 (\$60); 178 var. + 179 var. horizontal strip of four with diagonal surcharge, Pos. 2-5, unused \$896 (\$50+); 178 + 179 single and two pairs comprising Pos. 1-5, tied on back of cover to Germany \$2,856 (\$45+); 180a used \$112 (\$35); 180a tied on piece \$258 (\$35); 180a used, short perf. \$72.50 (\$35); 180a + 181a pair tied on piece, Pos. 1-2 \$493 (\$235+); 188a used \$95 (\$60); 188a tied on piece \$145 (\$60); 188a tied on Dec. 19 cover, said to be an FDC and unique as such \$1,680 (\$60+); and 188a + 189a pair tied on piece, Pos. 1-2 \$471 (\$310+).

Second Printing: 179F used, faults \$1,036 (\$1,750); 179G tied on piece, thin \$1,540 (\$900); 182 used, oval military station cancel \$325 (\$85); 182a tied on piece \$588 (\$325); 182 + 183 pair, Pos. 1-2, unused \$2,184 (\$1,250+); 182 + 183 pair tied on piece, Pos. 1-2 \$840 (\$360+); 182a + 183a pair tied on piece, Pos. 1-2, stained \$1,860 (\$875+); 183a tied on piece \$980 (\$550); 184 tied on piece by oval military station cancel \$359

(\$130); 184 + 185 pair tied on piece, Pos. 1-2, perf. stains \$784 (\$380+); 186 tied on piece \$196 (\$85); 186 tied on piece by oval military station cancel \$206 (\$85); 186 var. single with gutter at right, surcharge on stamp and gutter, Pos. 4-5, Pos. 5 on gutter, tied on piece \$258 (\$85+); 186a tied on piece \$672 (\$350); 186a tied on piece, stained \$560 (\$350); 187 tied on piece \$392 (\$250); 188a unused \$644 (\$200); 188b one impression faint, tied on piece \$471 (\$ —); 189 tied on piece \$185 (\$135); 188b + 189b one impression faint, pair tied on piece, Pos. 1-2, faults \$1,120 (\$ —); 190 unused \$228 (\$125); 190 var. horizontal cross gutter strip of three, surcharge on stamps and gutter, Pos. 3-5, Pos. 4 on gutter, tied on piece, crease \$347 (\$70+); 190a unused \$258 (\$200); 190a tied on piece \$90 (\$65); 190a tied on piece \$130 (\$65); 190b left stamp without surcharge, tied on piece, stained \$222.50 (\$100); 190b right stamp without surcharge, tied on piece \$228 (\$100); 190 var. horizontal cross gutter strip of three, surcharge on one stamp and gutter, Pos. 4 on left stamp, Pos. 5 on gutter, right stamp without surcharge, tied on piece, staining \$190 (\$35+); 190a + 191a var. pair with gutter at right, surcharge on stamps and gutter, Pos. 1-3, Pos. 3 on left stamp, Pos. 2 on right stamp, Pos. 1 on gutter, tied on piece, staining \$336 (\$215+); 190 var. single with very wide margin at left, surcharge on stamp and margin, Pos. 1-3, Pos. 1-2 on margin with no perforations between, Pos. 3 on stamp, tied on piece, staining \$336 (\$35+); 191 var. single with gutter at left, surcharge on stamp and gutter, Pos. 1-2, Pos. 1 on gutter, tied on piece \$163 (\$40+); and 191a tied on piece \$415 (\$150).

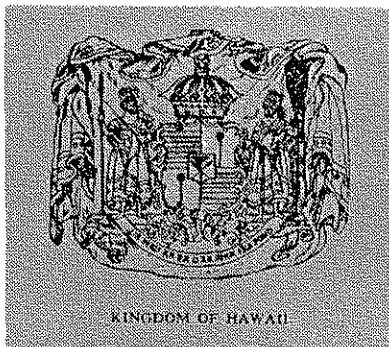
Third Printing: 196 tied on cover to Havana, faults \$1,512 (\$10+); 196 var. single with gutter at right, surcharge on stamp and gutter, Pos. 4-5, Pos. 5 on gutter, tied on piece \$112 (\$10+); 196 + 197 pair tied on piece, Pos. 1-2 \$117 (\$45+); 196a tied on piece \$217.50 (\$45); 196a tied on piece \$228 (\$45); 197 tied on piece \$52 (\$35); 197a tied

on piece, perf. toning \$96 (\$75); 198 (2), 199 singles tied on pieces by oval military station cancels \$145 (\$25); 198a, 199a tied on pieces, one toned \$325 (\$105); 198b *reading up* tied on piece \$515 (\$250); 198b *reading down* tied on piece, toned \$392 (\$250); 198b var. *vertical pair* with vertical surcharge *reading up*, *surcharge split*, Pos. 4-5, tied on piece \$784 (\$500+); 198c one impression faint, unused \$223 (\$ —); 198c + 199c pair, one impression faint, Pos. 1-2, unused \$392 (\$ —); 199b *reading up* tied on piece, toned \$460 (\$300); and 200 tied on piece by oval military station cancel \$72.50 (\$12.50).

Fourth Printing: 179B used \$173 (\$85); 179B tied on piece \$140 (\$85); 179Bc tied on piece \$728 (\$ —); 179D used \$588 (\$350); 189C used, Pos. 3, faults (identified as 183B, unique; but stamp is 189C and is not unique) \$3,528 (\$ —); 192 used \$168 (\$100); 193 used, thin \$48 (\$100); 192 + 193 var. horizontal cross gutter strip of three, surcharge on stamps and gutter, Pos. 2-4, Pos. 3 on gutter, tied on piece, stained \$644 (\$225+); and 192a tied on piece \$1,820 (\$ —).

Fifth Printing: 201 tied on piece by duplex military station cancel \$233 (\$75); 201 tied on piece \$168 (\$75); 201a tied on piece, off center \$95

(\$150); 201a tied on piece, well centered \$223 (\$150); 201a tied on piece \$263 (\$150); 201b unused \$784 (\$275); 201b used, toned \$112 (\$140); 201a var. (201a + 201c var?) single with margin at left, surcharge on stamp and margin, Pos. 2-3, Pos. 3 on margin, tied on piece, toned \$437 (\$150+); 201 var. single with gutter at right, surcharge on stamp and gutter, Pos. 4-5, Pos. 5 on gutter, tied on piece, stained \$459 (\$75+); 203b tied on piece, toned \$700 (\$350); 205a tied on piece \$303 (\$150); 205a used \$386 (\$150); 205b used \$206 (\$150); 206 var. single with margin at right, surcharge on stamp and margin, Pos. 4-5, Pos. 5 on margin, tied on piece \$493 (\$200+); 211 tied on piece \$1,738 (\$850); 211a tied on piece \$2,408 (\$ —); 212 used, stained \$1,232 (\$1,350); 215a used \$471 (\$275); 217 unused \$1,400 (\$1,200); 217a unused \$2,408 (\$ —); 217b used \$1,736 (\$450); 217 + 218 pair, Pos. 4-5, tied on cover to New York, Pos. 4 faulty, Pos. 5 badly damaged, cover damaged \$3,584 (\$1,250+); 218a tied on piece, stained \$2,184 (\$1,250); 219 used, thin \$426 (\$600); 219a tied on piece, stained \$1,148 (\$750); 219b used, thin \$1,848 (\$750); 220 tied on piece, stained \$1,848 (\$1,200); and 220 tied on piece \$1,680 (\$1,200).



HAWAII

Section Editor —
Geoffrey Brewster



A Chronology and Explanation of the Stamps of Hawaii

By Geoffrey Brewster

(Continued from last issue)

In 1868 and 1869 Hawaii issued three new stamps of the old Boston printings in an effort to satisfy collector and dealer requests for those old Hawaiian stamps. These stamps are new ones because they are different from the originals. The stamps consist of the 2¢ scarlet King Kamehameha IV, engraved, Scott No. 29, a reproduction of the 2¢ "Boston Lithographed;" and the 5¢ blue King Kamehameha III on medium wove and 13¢ dull rose King Kamehameha III on medium wove, Scott Nos. 10

and 11, which are re-issues of the 5¢ and 13¢ "Boston Engraved" because the 5¢ is on a new paper and the 13¢ is in a new color as well as on a new paper.

In 1871 Hawaii issued three new Banknotes. The 1¢ violet new design featuring Princess Kamamalu, Scott No. 30, replaced the 1¢ Numerals. Scott erroneously lists this stamp as "purple;" the 1871 1¢ is violet (or mauve, if you prefer) whereas it is the 1886 1¢ re-issue that is purple. The other two stamps are the 6¢ yellowish green King Kamehameha V and the 18¢ dull rose Mataio Kekuanoa, Scott Nos. 33 and 34. These two new denominations paid the new 6¢ letter postage and multiple rates thereof of the Hawaii-United States 6¢ basic postage rate, agreed upon

POSSESSIONS



The Journal of the
United States Possessions Philatelic Society



APS Affiliate No. 99

Vol. 3, No. 1, Whole No. 7
First Quarter, 1980

It is believed that a series of misunderstandings seems to have played the largest role in allowing matters to go as far as they did. During early discussions, the acceptance of preliminary designs by one party seems to have meant acceptance of the concept of the stamp issuing program by the other party. This problem was brought on by the language barriers which existed among the primary parties who spoke Chinese, Marshallese, Japanese, and English and rarely had a precise understanding of what was actually being said in another language.

NOTICE USPPS Meeting

There will be a regional meeting of the USPPS in San Francisco on Saturday April 12 from 3-5 PM. The meeting will be held at San Francisco's annual WESTPEX stamp show, this year on April 11-13, at the Jack Tar Hotel at the corner of Geary St. and Van Ness Ave. USPPS President Geoffrey Brewster will host the meeting. The program will include a discussion of some interesting stamps and covers. All members and non-members are welcome to attend, and are urged to bring any items that they would like to discuss or have identified.

We buy
**United States
Offices in China
(K1-18)**

Stamps & Postal History

Also regular issues
used in China.

**George
Alevizos**



2716 Ocean Park Blvd. Suite 1020
Santa Monica, CA 90405
Tel: 213/450-2543

Juhring Puerto Principe Again By Geoffrey Brewster

In November 1979, Sotheby, Parke, Bernet of New York offered 74 lots of Puerto Principe stamps in their Sale No. 39. A large number of these stamps were also in the Juhring sale of a year earlier, the Stanley Gibbons of Frankfurt, Germany auction that I reported on in *Possessions* Whole No. 2. In the Sotheby sale many of the Juhring stamps sold for about the same or less than in the Gibbons sale. And this despite the supposed bull market in Puerto Principe stamps. Incidentally, this past summer many of the Philippines and other Possessions that were also in the Gibbons Juhring sale were offered in the U.S. at auction and at private treaty, often at prices well below those reportedly realized in the Gibbons sale. I find all of this most interesting and curious, but will let the reader draw his own conclusions.

Scott Vol. IV Catalogue Reviewed by Gilbert N. Plass

The Scott 1980 Standard Postage Stamp Catalogue appeared on schedule this fall. It is of particular interest to U.S. Possessions collectors as two important countries in our area of interest are listed only in Vol. IV: Ryukyu and Trieste. In addition all of the issues of the Philippines and Puerto Rico are listed in this volume including the Spanish issues and those of the independent Republic of the Philippines. For the first time this year (at least as far as your reviewer has observed) some prices of the U.S. issues from the Philippines and Puerto Rico have been changed between Vol. I and Vol. IV. Thus Vol. IV has the very latest prices. As an example, Philippines No. 433b, the "WEALTH COMMON-" error, is listed at \$1500 in Vol. I, but is raised to \$2250 in Vol. IV.

Ryukyus has been completely repriced. Many issues are increased in price, typically the 10-20% range, while only a handful have been slightly reduced in price. A few examples with the 1979 Catalogue price in parenthesis: Scott No. 1-7, \$16 (\$13); 1a-7a, \$220 (\$196); 8-13, \$34 (\$28); 14, \$28 (\$25); 16, \$7 (\$6); 16a, \$17 (\$15); 16b, \$23 (\$20).

Trieste Zone A has also been completely repriced with almost every stamp from the lowest to the highest priced increasing in value. This reflects the recent interest in these stamps issued under the Allied Military Government of the United States and Great Britain. We can only give a few

